

# KNIT WEAR



# BASIC KNITWEAR RANGE

100% Acrylic Yarn (10 Gauge)



MENS S/LESS IN BLACK



MENS L/S IN BLACK



LADIES CARDIGAN IN BLACK



MENS S/LESS IN NAVY



MENS L/S IN NAVY



LADIES CARDIGAN IN NAVY

## MENS V-NECKS

S/LESS: JSY-SSP | L/S: JSY-LSP

- SIZES XS - 5XL
- Classic V-neck styling

- Double rib cuff and waistband
- Available in sleeveless and long sleeve

MENS SIZING CHART:

SIZES:	X	S	M	L	XL	2XL	3XL	4XL	5XL
HALF CHEST (CM):	S	52	54	56	58	60	62	64	66
	50								

## LADIES CARDIGAN

LADIES L/S: JSY-LCA

- SIZES XS - 5XL
- Classic full button styling

- Double rib cuff and waistband
- Available in long sleeve only

LADIES SIZING CHART:

SIZES:	X	S	M	L	XL	2XL	3XL	4XL	5XL
HALF BUST (CM):	S	48	50	52	54	56	58	60	62
	46								



# DELUXE KNITWEAR RANGE

100% Acrylic Yarn (10 Gauge)



MENS S/LESS IN BLACK



MENS L/S IN BLACK



LADIES CARDIGAN IN BLACK



MENS S/LESS IN NAVY



MENS L/S IN NAVY



LADIES CARDIGAN IN NAVY

## MENS V-NECKS

S/LESS: JSY-KDS | L/S: JSY-KDL

• SIZES XS – 5XL

- Classic V-neck styling
- Plain back and sleeves

- Front with square ripple and needle out pattern
- Double ribbed waistband and cuffs
- Available in sleeveless and long sleeve

MENS SIZING CHART:

SIZES: HALF

CHEST (CM):	XS	S	M	L	XL	2XL	3XL	4XL	5XL
	47.5	48.5	51	53.5	56	58.5	61	62	64

## LADIES CARDIGAN

LADIES L/S: JSY-KDC

• SIZES XS – 5XL

- Fashionable one button style
- Plain back and sleeves

- Front with square ripple and needle out pattern
- Double ribbed waistband and cuffs
- Available in long sleeve only

LADIES SIZING CHART:

SIZES:	X	S	M	L	XL	2XL	3XL	4XL	5XL
HALF BUST (CM):	S	45	47	49	51	53	55	57	59
	43								



# KATE LADIES CARDIGAN

100% Acrylic Yarn (12 Gauge)



LADIES CARDIGAN IN CHARCOAL



LADIES CARDIGAN IN NAVY



LADIES CARDIGAN IN BLACK

## LADIES CARDIGAN

LADIES L/S: JSY-KAT

• SIZES S - 5XL

- Full button front
- Soft and lightweight acrylic

- Feminine styling and fit
- Longer length for comfort

LADIES SIZING CHART:

SIZES:

	S	M	L	XL	2XL	3XL	4XL	5XL
HALF BUST (CM):	47	49.5	52.5	55	59.5	62	64.5	68





ALT-PURS  
**MENS SLEEVELESS  
 PERU V-NECK JERSEY**

**Fabric** 100% polyester • classic sleeveless v-neck with ribbing at hem

BL GY N

HALF CHEST (CM) STANDARD FIT

S	M	L	XL	2XL	3XL	4XL	5XL
51	54	57	60	63	66	69	72



ALT-PRUL  
**MENS LONG SLEEVE  
 PERU V-NECK JERSEY**

**Fabric** 100% polyester • ribbed v-neck, cuff and hem • set in sleeves

BL GY N

HALF CHEST (CM) STANDARD FIT

S	M	L	XL	2XL	3XL	4XL	5XL
51	54	57	60	63	66	69	72

ALT-PRLL  
**LADIESLONG SLEEVE  
 PERU V-NECK JERSEY**

**Fabric** 100% polyester • ribbed v-neck, cuff and hem • set in sleeves

BL GY N

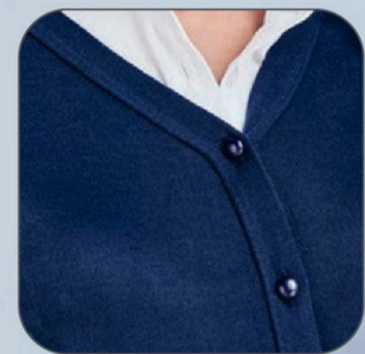
HALF CHEST (CM) STANDARD FIT

S	M	L	XL	2XL	3XL	4XL
44	47	50	53	56	59	62

## CLASSIC EVERYDAY KNITWEAR

ALT-PRUL & ALT-PRLL ARE AVAILABLE IN THE 3 COLOURS SHOWN ON THIS PAGE





ALT-HYL  
**LADIESWAVERLEY  
 CARDIGAN**

**Fabric** 100% polyester • classic button-up cardigan • ribbed detail at neckline, cuff and hem • tonal matte buttons

BL GY N

HALF CHEST (CM) STANDARD FIT

S	M	L	XL	2XL	3XL	4XL
45	48	51	54	57	60	63



ALT-WVY  
**MENS1/4 ZIP  
 WAVERLEY JERSEY**

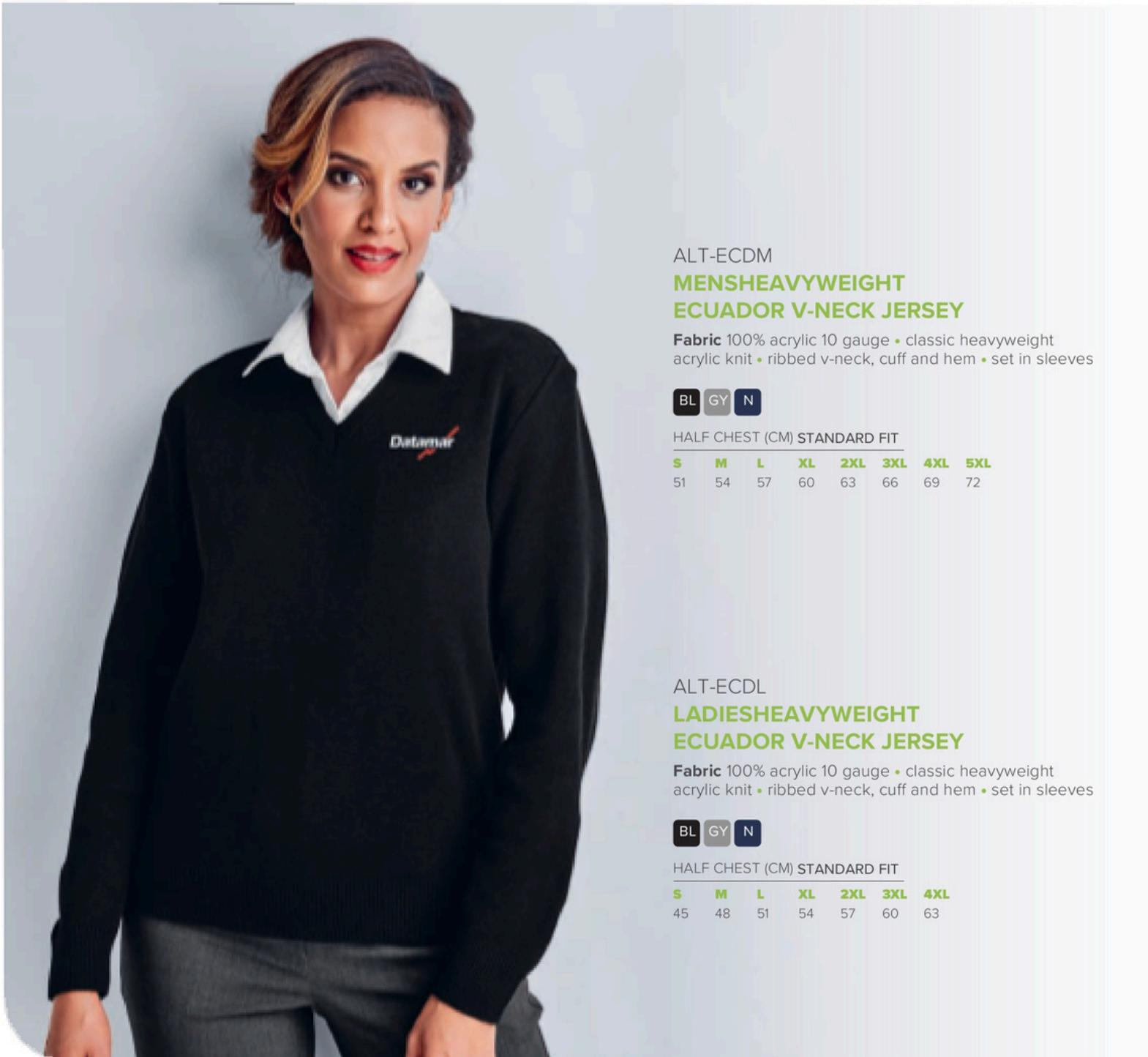
**Fabric** 100% polyester • ribbed collar, cuff and hem • zip at neck • set in sleeves

BL GY N

HALF CHEST (CM) STANDARD FIT

S	M	L	XL	2XL	3XL	4XL	5XL
51	54	57	60	63	66	69	72





ALT-ECDM

**MENSHEAVYWEIGHT  
ECUADOR V-NECK JERSEY**

**Fabric** 100% acrylic 10 gauge • classic heavyweight acrylic knit • ribbed v-neck, cuff and hem • set in sleeves

BL GY N

HALF CHEST (CM) STANDARD FIT

S	M	L	XL	2XL	3XL	4XL	5XL
51	54	57	60	63	66	69	72

ALT-ECDL

**LADIESHEAVYWEIGHT  
ECUADOR V-NECK JERSEY**

**Fabric** 100% acrylic 10 gauge • classic heavyweight acrylic knit • ribbed v-neck, cuff and hem • set in sleeves

BL GY N

HALF CHEST (CM) STANDARD FIT

S	M	L	XL	2XL	3XL	4XL
45	48	51	54	57	60	63

ALT-ECDM & ALT-ECDL ARE AVAILABLE IN THE 3 COLOURS SHOWN ON THIS PAGE



## BRANDING OPTIONS:

The following branding options  
are available on quotation

basis:

- Embroidery
- HTV vinyl
- Sublimation
- Laser Engraving

Contact us now for a quotation  
[heili@rifleprinting.co.za](mailto:heili@rifleprinting.co.za)  
[james@rifleprinting.co.za](mailto:james@rifleprinting.co.za)  
[www.rifleprinting.co.za](http://www.rifleprinting.co.za)