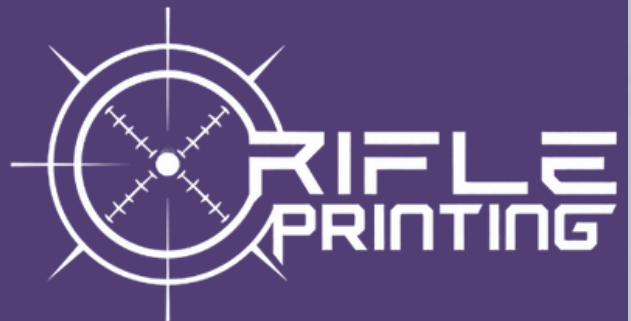




KIDS



ALT-T R I

KIDSTRICKLE BIB APRON

Weight 200g/m Fabric 80% polyester, 20% cotton

• adjustable neck strap • front patch pocket • back ties

BL W

CHEST: 20cm WIDTH: 42cm LENGTH: 66cm





AN EVERYDAY ESSENTIAL for any active child! Made from durable polyester, these vests are **LIGHTWEIGHT, BREATHABLE** and **EASY TO MAINTAIN.**

ALT-ASKV

KIDSALLSTAR VEST

Weight 160g/m2 **Fabric** 100% polyester birdseye

- scooped neckline with tonal self-fabric binding at neckline and armholes
- easy-care fabric

BL N R RB W

HALF CHEST (CM) STANDARD FIT

AGE:	4	6	8	10	12	14
CM:	29	32	35	38	41	44





BAS-4757

KIDSSUPER CLUB 150 T-SHIRT

Weight 150g/m2 **Fabric** 100% cotton, single jersey knit • short sleeve • ribbed crew neck

- BL
- L
- LB
- N
- O
- R
- RB
- W
- Y

HALF CHEST (CM) STANDARD FIT

AGE:	4	6	8	10	12	14
CM:	31	35	39	43	47	51






SUNRISE
attitude



ALT-ASKS
KIDSALLSTAR T-SHIRT

Weight 160g/m2 **Fabric** 100% polyester
birdseye • short sleeve • self-fabric crew
neck • easy-care fabric

BL L N O R RB W

HALF CHEST (CM) STANDARD FIT

AGE: 4	6	8	10	12	14
CM: 30	34	38	41	44	47





Find your perfect match with
18 VIBRANT AND FUN
 colour options.

ALT-BBK

KIDSBASIC PIQUE GOLF SHIRT

Weight 175g/m2 **Fabric** 65% polyester, 35% cotton, piqué knit • two ridge collar detail • two button placket • easy-care fabric



HALF CHEST (CM) STANDARD FIT

AGE:	4	6	8	10	12	14
CM:	32	35	38	41	44	46



A **LIGHTWEIGHT,**
BREATHABLE and
QUICK DRYING golf
 shirt that allows
 you to look good and
FEEL GREAT.

ALT-T R K
KIDSTOURNAMENT GOLF SHIRT

Weight 145g/m2 **Fabric** 100% polyester, techno-dri
 • knitted collar • contrast inner placket and neck
 tape • three button placket • easy-care fabric
 • White (W) with black trim

BL GY L N O R RB W

HALF CHEST (CM) STANDARD FIT

AGE:	4	6	8	10	12	14
CM:	32	35	38	41	44	47





ALT-CPGK

KIDSCHAMPIONSHIP GOLF SHIRT

Weight 145g/m2 **Fabric** 100% polyester, techno-dri
 • moisture management fabric • knitted collar • two button placket • contrast panel detail at sleeves and sides • easy-care fabric • White (W) with black trim



HALF CHEST (CM) STANDARD FIT

AGE:	4	6	8	10	12	14
CM:	32	35	38	41	44	47





With a sleek design and a **SLIP-ON FIT**, these sneakers are easy to wear and **PAIR WITH ANY OUTFIT**.

FO-A L-3-A

**UNISEX COMFORT
SLIP-ON SNEAKER**

Fabric 100% polyester • knitted slip-on sneaker • padded insoles • contrast heel tab

BL / BLW / N

L RELAXED FIT • M STANDARD FIT

UK SIZE: 2 - 13





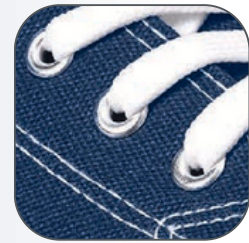
ALT-TRD
UNISEXTRENDI CANVAS SNEAKER

Fabric 80% cotton, 20% polyester canvas • canvas sneaker with rubber sole and toecap • twin-needle stitching • cotton laces and lining • padded insoles • metallic eyelets

BL BU N R W
 UK SIZE: 2 - 13

BLUE (DENIM)

NAVY



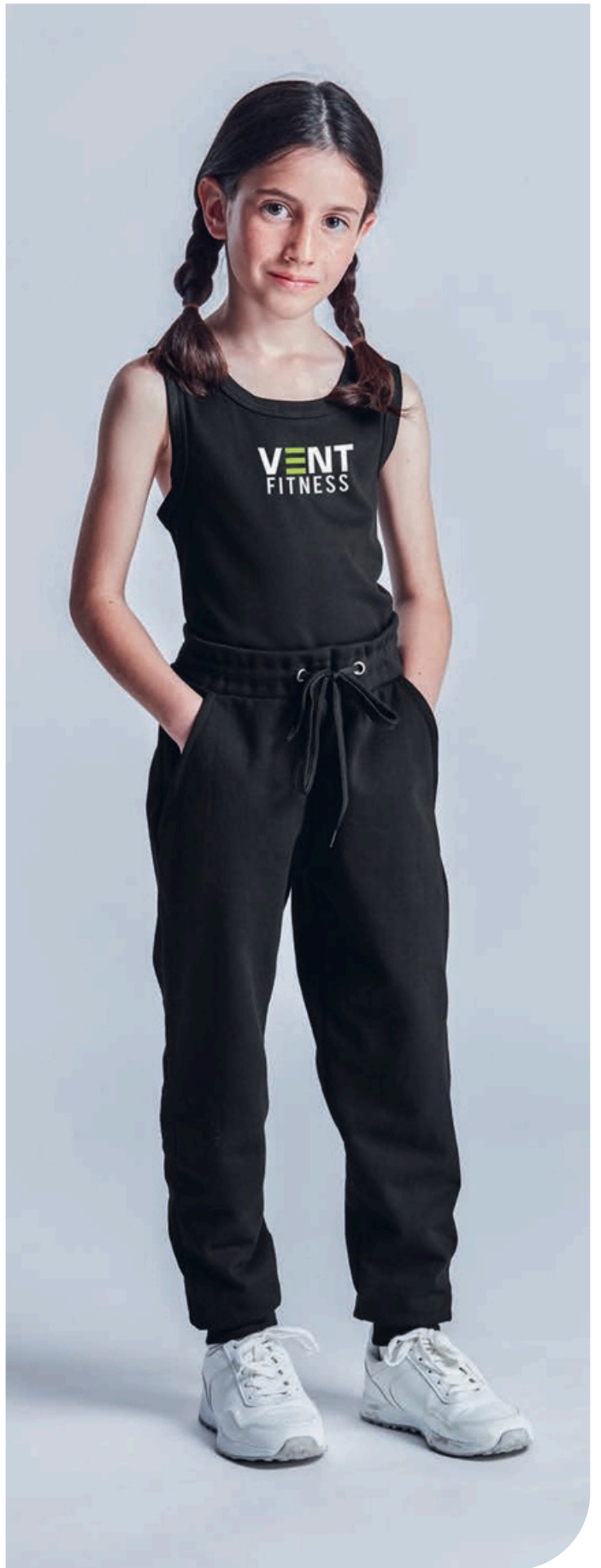
ALT-TRD & ALT-RTR BOTH HAVE OPTIONS AVAILABLE IN BLUE (DENIM) & NAVY

ALT-RTR
UNISEX RETRO HIGH TOP CANVAS SNEAKER

Fabric 80% cotton, 20% polyester canvas • high top canvas sneaker with rubber sole and toecap • twin-needle stitching • cotton laces and lining • padded insoles • metallic eyelets

BL BU N R W
 UK SIZE: 2 - 13





ALT-AJU
UNISEXACTIVE JOGGERS

Weight 240g/m² **Fabric** superior filament fabric • elasticated waistband with drawcord • two side pockets • fashionable tapered trouser legs • rib finish

BL GY

HALF WAIST (CM) STANDARD FIT

AGE:	8	10	12	14
CM:	26	29	32	35



ALT-EHDK

KIDSESENTIAL HOODED SWEATER

Weight 240g/m2 **Fabric** superior filament brushed fleece • front self-fabric kangaroo pocket • two-piece hood with matching drawstring • matching rib sleeve cuff and hem • easy-care fabric

BL GY N R RB

HALF CHEST (CM) STANDARD FIT

AGE:	4	6	8	10	12	14
CM:	35	38	41	44	47	50

WARM & COMFY HOODED SWEATERS



ALT-ATK

KIDSALTI-MAC TERRY JACKET

Fabric 100%oxford nylon outer, 55% cotton, 45% polyester blend towelling • water resistant • terry towelling inner • full zip with metal puller • inner pocket • ribbed cuffs • concealed hood • drawcord at hem • welt side pockets

BL G N R RB

HALF CHEST (CM) STANDARD FIT

AGE:	4	6	8	10	12	14
CM:	39	42	45	48	51	54

ALL WEATHER PROTECTION



OUR BESTSELLING SOFTSHELL IS A WINTER MUST-HAVE



A LT- PA K

KIDSPALERMO SOFTSHELL JACKET

Weight 300g/m2 **Fabric** 100% polyester knit bonded with micro fleece • full zip • zip pockets • elasticated binding at sleeves



HALF CHEST (CM) STANDARD FIT

AGE: 4	6	8	10	12	14
CM: 35	38	41	44	47	50



KEEP WARM IN OUR **STYLISH** **HUDSON JACKET**

ALT-HUK
KIDSHUDSON JACKET

Fabric 100% polyester 40D, 210T lining, polyester wadding
• fully padded quilted jacket • slanted zipped pockets
• elasticated binding on bottom hem and sleeves

BL GY N R

HALF CHEST (CM) STANDARD FIT

AGE: 4	6	8	10	12	14
CM: 38	41	44	47	50	53



UNPARALLELED PERFORMANCE AND COMFORT

ALT-CTSU

UNISEXCHAMPIONSHIP TRACKSUIT

Weight 200g/m2 **Fabric** 100% polyester sports knit • top: long sleeve top with rib cuffs • contrast panel detail at sleeves and sides • bottom: elasticated waistband with inner drawstring • tapered legs • easy-care fabric



TOP: HALF CHEST (CM) STANDARD FIT

AGE: 8	10	12	14
CM: 41	44	47	50

PANTS: HALF WAIST (CM) STANDARD FIT

AGE: 8	10	12	14
CM: 23	26	29	32



TR-AL-11-A

UNISEXSIDELINE TRACKSUIT

Weight 210g/m **Fabric** 100% polyester, trilobal sports knit • top: contrast panel detail • ribbed collar, cuffs and hem • bottom: elasticated waistband with inner drawcord • contrast panel details • tapered legs



TOP: HALF CHEST (CM) STANDARD FIT

AGE	8	10	12	14
CM:	41	44	47	50

PANTS: HALF WAIST (CM) STANDARD FIT

AGE	8	10	12	14
CM:	24	27	30	33





TR-SL-10-A

**UNISEXSLAZENGER
PERFORMANCE TRACKSUIT**

Weight 230g/m2 **Fabric** 100%polyester, satin sports knit
 • **top:** full zip with hood • contrast elasticated ribbing at hem and sleeves • features contrast chest zip pocket detail • reflective Slazenger logo • **bottom:** elasticated waistband with inner drawcord • tapered legs • reflective Slazenger logo

BL GY N

TOP: HALF CHEST (CM) STANDARD FIT

AGE	12	14
CM:	47	50

PANTS: HALF WAIST (CM) STANDARD FIT

AGE	12	14
CM:	29	32





BRANDING OPTIONS:

The following branding options
are available on quotation

basis:

- Embroidery
- HTV vinyl
- Sublimation
- Laser Engraving

Contact us now for a quotation

heili@rifleprinting.co.za

james@rifleprinting.co.za

www.rifleprinting.co.za