



# FORMAL

# WEAR





ALT-NHMS  
**MENSSHORT SLEEVE NOTTINGHAM SHIRT**

**Weight** 110g/m2 **Fabric** 55% polyester, 45% cotton, herringbone  
 • button down collar • back yoke with box pleat  
 • curved hem



HALF CHEST (CM) STANDARD FIT

S	M	L	XL	2XL	3XL	4XL	5XL
52	56	60	64	68	72	76	80

ALT-NHLS  
**LADIESSHORT SLEEVE NOTTINGHAM SHIRT**

**Weight** 110g/m2 **Fabric** 55% polyester, 45% cotton, herringbone  
 • front and back darts for shaping • stylish two button cuff  
 • curved hem • side slits



HALF CHEST (CM) STANDARD FIT

S	M	L	XL	2XL	3XL	4XL
45	49	53	57	61	65	69



ALT-NAML  
**MENSLONG SLEEVE NORTHAMPTON SHIRT**

**Weight** 110g/m **Fabric** 65% polyester, 35% cotton,  
 yarn-dyed stripe • chest pocket • branded buttons  
 • adjustable cuffs



HALF CHEST (CM) STANDARD FIT

S	M	L	XL	2XL	3XL	4XL	5XL
52	56	60	64	68	72	76	80

ALT-NALL  
**LADIESLONG SLEEVE NORTHAMPTON SHIRT**

**Weight** 110g/m **Fabric** 65% polyester, 35% cotton,  
 yarn-dyed stripe • open collar • front and back darts  
 for shaping • adjustable cuffs • curved hem with side slits



HALF CHEST (CM) STANDARD FIT

S	M	L	XL	2XL	3XL	4XL
45	49	53	57	61	65	69



The **STRETCH PROPERTIES** allow you to enjoy **FREEDOM OF MOVEMENT**, without compromising on a sleek and stylish tailored look.



C W-AV-179 -A  
**MENS LONG SLEEVE  
 ALEX VARGA OPUS STRETCH SHIRT**

**Weight** 150g/m2 **Fabric** 65% cotton 33% polyester 2% spandex  
 • satin stretch fabric ensures comfort and ease of movement  
 • sleek and stylish design • adjustable two button cuff  
 • engraved tonal buttons • back yoke • curved hem • Alex Varga silicone logo



HALF CHEST (CM) STANDARD FIT

S	M	L	XL	2XL	3XL	4XL	5XL
52	56	60	64	68	72	76	80

C W-AV-180 -A  
**LADIESLONG SLEEVE  
 ALEX VARGA OPUS STRETCH SHIRT**

**Weight** 150g/m2 **Fabric** 65% cotton 33% polyester 2% spandex  
 • satin stretch fabric ensures comfort and ease of movement  
 • sleek and stylish design • adjustable two button cuff • engraved tonal double buttons • front and back darts for shaping • side slits  
 • back yoke • curved hem • Alex Varga silicone logo



HALF CHEST (CM) STANDARD FIT

S	M	L	XL	2XL	3XL	4XL
45	49	53	57	61	65	69



ALEX VARGA SILICONE LOGO ON SLEEVE



BAS-808  
**LADIESSHORT SLEEVE ASPEN SHIRT**

**Weight** 130g/m2 **Fabric** 70% cotton, 30% polyester, oxford fabric  
 • pearlised buttons • front and back darts • bust darts • back yoke • shaped hem



HALF CHEST (CM) STANDARD FIT

S	M	L	XL	2XL	3XL	4XL
48	51	54	57	60	63	66

BAS-4764  
**LADIESLONG SLEEVE ASPEN SHIRT**

**Weight** 130g/m2 **Fabric** 70% cotton, 30% polyester, oxford fabric  
 • pearlised buttons • front and back darts • bust darts • adjustable two button cuff • back yoke • shaped hem



HALF CHEST (CM) STANDARD FIT

S	M	L	XL	2XL	3XL	4XL
48	51	54	57	60	63	66



BAS-7762  
**MENSLONG SLEEVE WILDSTONE SHIRT**

**Weight** 150g/m2 **Fabric** 100% cotton twill • front and back yoke • two pleated chest pockets with button flap • metal buttons



HALF CHEST (CM) STANDARD FIT

S	M	L	XL	2XL	3XL	4XL	5XL
55	58	61	64	67	70	73	76

BAS-7763  
**LADIESLONG SLEEVE WILDSTONE SHIRT**

**Weight** 150g/m2 **Fabric** 100% cotton twill • two pleated chest pockets with button flap • metal buttons • back yoke • curved hem



HALF CHEST (CM) STANDARD FIT

S	M	L	XL	2XL	3XL	4XL
48	51	54	57	60	63	66



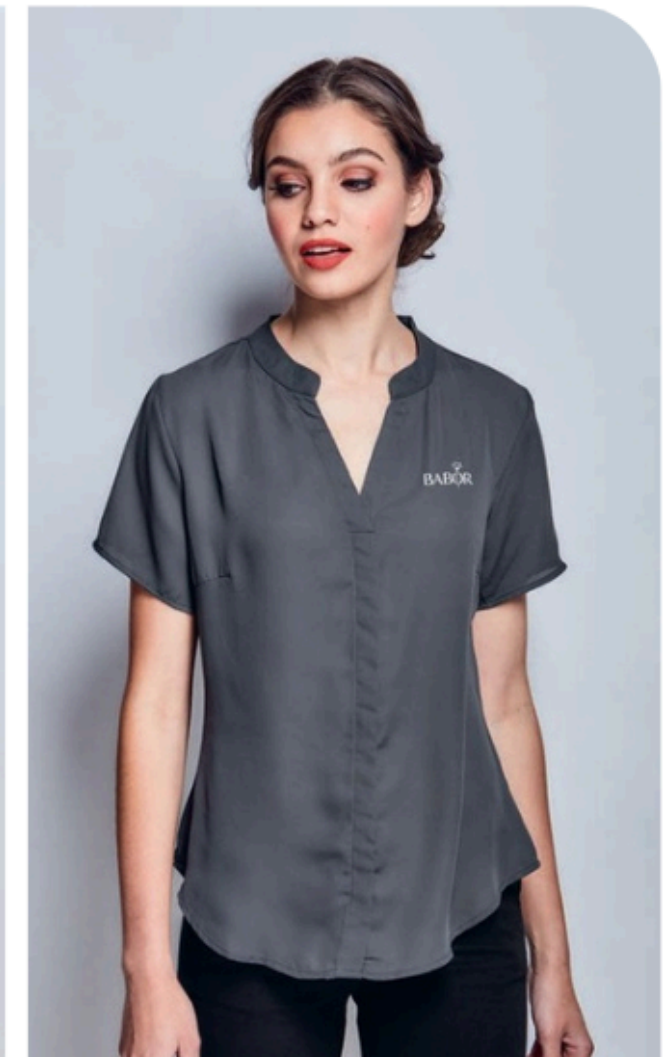
BA S-112 1 0  
**LADIESLONG SLEEVE AVA BLOUSE**

**Weight** 100g/m2 **Fabric** 100% polyester • mandarin collar • placket down centre front • bust darts • keyhole and pleat detail at cuff with one button



HALF CHEST (CM) STANDARD FIT

S	M	L	XL	2XL	3XL	4XL
47	50	53	56	59	62	65



BAS-11209  
**LADIESSHORT SLEEVE AVA BLOUSE**

**Weight** 100g/m2 **Fabric** 100% polyester • mandarin collar • concealed placket down centre front • bust darts



HALF CHEST (CM) STANDARD FIT

S	M	L	XL	2XL	3XL	4XL
47	50	53	56	59	62	65



CONCEALED PLECKET  
DOWN CENTRE FRONT

KEYHOLE & PLEAT DETAIL  
AT CUFF WITH ONE BUTTON



# BUILT TO WITHSTAND RUGGED LANDSCAPES



## ALT-SGMS MENSSHORT SLEEVE SERENGETI 2-TONE BUSH SHIRT

**Weight** 160g/m2 **Fabric** 100% brushed cotton twill • box pleated pockets with button down flap • front and back contrast yoke • back yoke has a box pleat • metal buttons • twin needle finishing at seams for strength and durability

MG ST STMG

HALF CHEST (CM) STANDARD FIT

S	M	L	XL	2XL	3XL	4XL	5XL
52	56	60	64	68	72	76	80



## BA S-7 756 MENSSHORT SLEEVE KENSINGTON SHIRT

**Weight** 105g/m2 **Fabric** 65% polyester, 35% cotton poplin • tonal buttons • chest pocket • back yoke with knife pleats • curved hem

BL GY LB N

HALF CHEST (CM) STANDARD FIT

S	M	L	XL	2XL	3XL	4XL	5XL
55	58	61	64	67	70	73	76

## BA S-7 757 LADIESSHORT SLEEVE KENSINGTON SHIRT

**Weight** 105g/m2 **Fabric** 65% polyester, 35% cotton poplin • tonal buttons • two chest pockets with button down flap • tab details on sleeve • front and back darts • back yoke • curved hem

BL GY LB N

HALF CHEST (CM) STANDARD FIT

S	M	L	XL	2XL	3XL	4XL
48	51	54	57	60	63	66





ALT-EPML  
**MENSLONG SLEEVE EMPIRE SHIRT**

**Weight** 135g/m2 **Fabric** 65% polyester, 35% cotton poplin  
 • concealed left chest pocket • adjustable cuffs



HALF CHEST (CM) STANDARD FIT

S	M	L	XL	2XL	3XL	4XL	5XL
52	56	60	64	68	72	76	80

ALT-EPLL  
**LADIESLONG SLEEVE EMPIRE SHIRT**

**Weight** 135g/m2 **Fabric** 65% polyester, 35% cotton poplin  
 • long sleeves with adjustable cuffs • side slits • front and back yoke



HALF CHEST (CM) STANDARD FIT

S	M	L	XL	2XL	3XL	4XL
45	49	53	57	61	65	69



CW-UB-183-A  
**MENSSHORT SLEEVE OXFORD SHIRT**

**Weight** 120g/m2 **Fabric** 80% polyester, 20% cotton • oxford weave • chest pocket • back yoke with box pleat • curved hem



HALF CHEST (CM) STANDARD FIT

S	M	L	XL	2XL	3XL	4XL	5XL
54	57	60	63	66	69	72	75

CW-UB-184-A  
**LADIESSHORT SLEEVE OXFORD SHIRT**

**Weight** 120g/m2 **Fabric** 80% polyester, 20% cotton • oxford weave • bust darts • back yoke • curved hem with side slits



HALF CHEST (CM) STANDARD FIT

S	M	L	XL	2XL	3XL	4XL
49	52	55	58	61	64	67



CW-UB-194-A & CW-UB-196-A ARE AVAILABLE IN THE 3 COLOURS SHOWN ON THIS PAGE



**BAS-809**  
**MENSSHORT SLEEVE ASPEN SHIRT**

**Weight** 130g/m2 **Fabric** 70% cotton, 30% polyester, oxford fabric  
 • button down collar • striped neck band • chest pocket • turn up at sleeve • back yoke • shaped hem



HALF CHEST (CM) RELAXED FIT

S	M	L	XL	2XL	3XL	4XL	5XL
58	61	64	67	70	73	76	79

**BAS-810**  
**MENSLONG SLEEVE ASPEN SHIRT**

**Weight** 130g/m2 **Fabric** 70% cotton, 30% polyester, oxford fabric  
 • button down collar • striped neck band • chest pocket • adjustable two button cuff • shaped hem



HALF CHEST (CM) RELAXED FIT

S	M	L	XL	2XL	3XL	4XL	5XL
58	61	64	67	70	73	76	79

**NEW**

**CW-UB-194-A**  
**MENS LONG SLEEVE MODERNA TWILL SHIRT**

**Weight** 145g/m2 **Fabric** 100% cotton twill • button down collar  
 • adjustable two button cuff • back yoke with shoulder pleats • curved hem



HALF CHEST (CM) STANDARD FIT

S	M	L	XL	2XL	3XL	4XL	5XL
54	57	60	63	66	69	72	75

**NEW**

**CW-UB-196-A**  
**LADIES LONG SLEEVE MODERNA TWILL SHIRT**

**Weight** 145g/m2 **Fabric** 100% cotton twill • open neck collar  
 • adjustable two button cuff • features front and back darts for shaping • back yoke • curved hem



HALF CHEST (CM) STANDARD FIT

S	M	L	XL	2XL	3XL	4XL
49	52	55	58	61	64	67



BIZ-3632  
**LADIES 3/4 SLEEVE  
 MICRO CHECK SHIRT**

**Weight** 105g/m2 **Fabric** 50% cotton, 50% polyester, easy iron, yarn-dyed fabric • 3/4 cuffed sleeves with slits • tonal buttons • front and back darts • curved hem

BU LB N

HALF CHEST (CM) STANDARD FIT

S	M	L	XL	2XL	3XL	4XL
4	8	55	54	56.5	59	61.5 64

MICRO-CHECK PATTERN



BAS-3419  
**MENSLONG SLEEVE ASTON SHIRT**

**Weight** 95g/m2 **Fabric** 60% polyester, 40% cotton, yarn-dyed check poplin • tonal buttons • chest pocket • adjustable two button cuff • back yoke with knife pleats • curved hem

BL GY LB N

HALF CHEST (CM) STANDARD FIT

S	M	L	XL	2XL	3XL	4XL	5XL
55	58	61	64	67	70	73	76

BAS-3421  
**LADIESLONG SLEEVE ASTON SHIRT**

**Weight** 95g/m2 **Fabric** 60% polyester, 40% cotton, yarn-dyed check poplin • tonal buttons • chest pocket • two button cuff • side slits • back yoke • curved hem

BL GY LB N

HALF CHEST (CM) STANDARD FIT

S	M	L	XL	2XL	3XL	4XL
48	51	54	57	60	63	66



ALT-NHML  
**MENSLONG SLEEVE NOTTINGHAM SHIRT**

**Weight** 110g/m2 **Fabric** 55% polyester, 45% cotton, herringbone • button down collar • back yoke with box pleat • adjustable cuffs • curved hem



HALF CHEST (CM) STANDARD FIT

S	M	L	XL	2XL	3XL	4XL	5XL
52	56	60	64	68	72	76	80



BUTTON DOWN COLLAR



HERRINGBONE PATTERN

ALT-NHLL  
**LADIESLONG SLEEVE NOTTINGHAM SHIRT**

**Weight** 110g/m2 **Fabric** 55% polyester, 45% cotton, herringbone • front and back darts for shaping • two button cuff • curved hem • side slits



HALF CHEST (CM) STANDARD FIT

S	M	L	XL	2XL	3XL	4XL
45	49	53	57	61	65	69



ALT-NHML, ALT-NHLL, ALT-NHMS & ALT-NHLS ARE AVAILABLE IN THE 5 COLOURS SHOWN ON THIS PAGE



BAS-7772 & BAS-7773 ARE AVAILABLE IN THE 2 COLOURS SHOWN ON THIS SPREAD

BAS-7772  
**MENSLONG SLEEVE MILANO SHIRT**

**Weight** 150g/m **Fabric** 100% cottontwill • tonal buttons • chest pocket • adjustable two button cuff • back yoke with box pleat • curved hem



HALF CHEST (CM) STANDARD FIT

S	M	L	XL	2XL	3XL	4XL	5XL
55	58	61	64	67	70	73	76

BAS-7773  
**LADIESLONG SLEEVE MILANO SHIRT**

**Weight** 150g/m **Fabric** 100%cottontwill • tonalbuttons • front and back darts • adjustable two button cuff • back yoke



HALF CHEST (CM) STANDARD FIT

S	M	L	XL	2XL	3XL	4XL
48	51	54	57	60	63	66



**BIZ-3630**  
**MENSLONG SLEEVE MICRO CHECK SHIRT**

**Weight** 105g/m2 **Fabric** 50% cotton, 50% polyester, easy iron, yarn-dyed fabric • adjustable two button cuff • tonal buttons • chest pocket • back yoke with knife pleats • extended back length • curved hem



HALF CHEST (CM) STANDARD FIT

S	M	L	XL	2XL	3XL	4XL
56	59	62.5	66	69.5	74	79

**BIZ-3631**  
**MENSHORT SLEEVE MICRO CHECK SHIRT**

**Weight** 105g/m2 **Fabric** 50% cotton, 50% polyester, easy iron, yarn-dyed fabric • tonal buttons • chest pocket • back yoke with knife pleats • extended back length • curved hem



HALF CHEST (CM) STANDARD FIT

S	M	L	XL	2XL	3XL	4XL
56	59	62.5	66	69.5	74	79



**BAS-7760**  
**MENSHORT SLEEVE WILDSTONE SHIRT**

**Weight** 150g/m2 **Fabric** 100% cotton twill • front and back yoke • two pleated chest pockets with button flap • metal buttons



HALF CHEST (CM) STANDARD FIT

S	M	L	XL	2XL	3XL	4XL	5XL
55	58	61	64	67	70	73	76

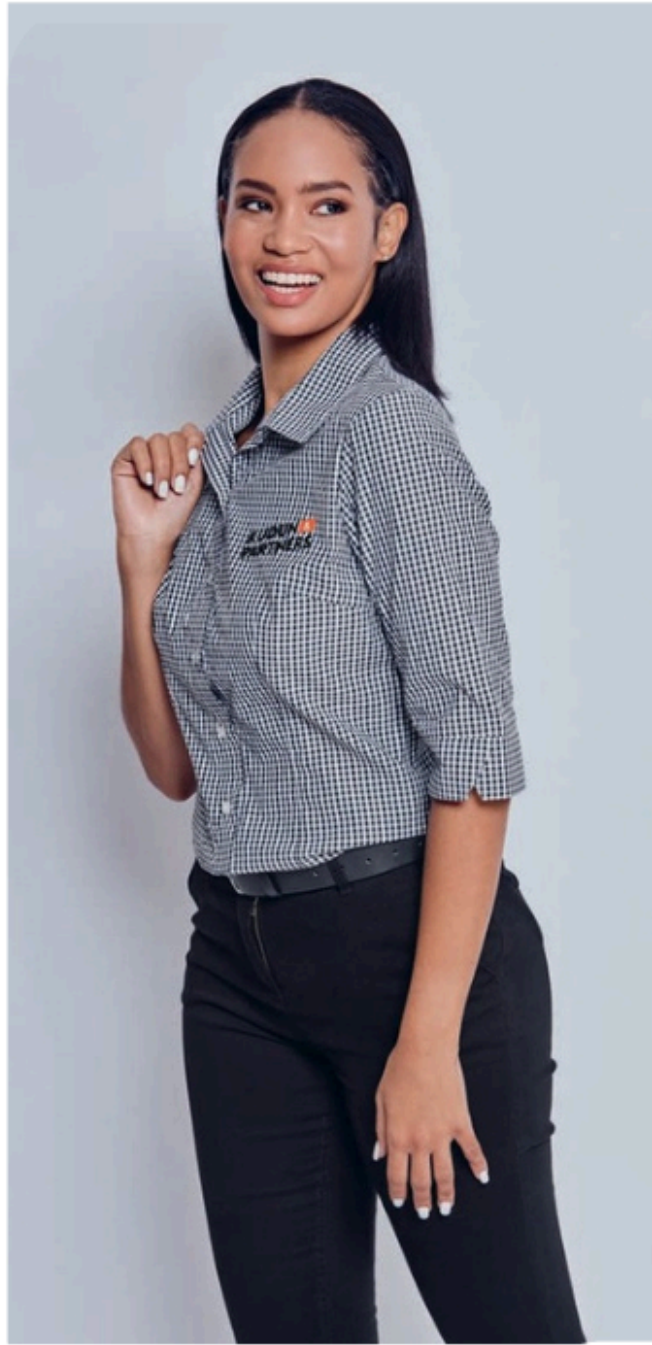
**BAS-7761**  
**LADIESHORT SLEEVE WILDSTONE SHIRT**

**Weight** 150g/m2 **Fabric** 100% cotton twill • two pleated chest pockets with button flap • metal buttons • back yoke • curved hem



HALF CHEST (CM) STANDARD FIT

S	M	L	XL	2XL	3XL	4XL
48	51	54	57	60	63	66



## SYCAMORE LONG SLEEVE SHIRT

This cosmopolitan button-up shirt boasts a classic and contemporary style..

ELE-4012

### MEN'S LONG SLEEVE SYCAMORE SHIRT

**Weight** 125g/m2 **Fabric** 50% cotton, 50% polyester, dobby weave • two button adjustable cuff • tonal buttons • chest pocket • back yoke with box pleat • curved hem

BL BU N

HALF CHEST (CM) STANDARD FIT

S	M	L	XL	2XL	3XL	4XL
56	58.5	61	66	68.5	71	75

ELE-4013

### LADIES LONG SLEEVE SYCAMORE SHIRT

**Weight** 125g/m2 **Fabric** 50% cotton, 50% polyester, dobby weave • two button cuff • tonal buttons • front dart • bust dart • back yoke with 3-piece back panel • curved hem

BL BU N

HALF CHEST (CM) STANDARD FIT

S	M	L	XL	2XL	3XL
48	51	54.5	57	60	62



3/4 CUFFED SLEEVE WITH SLITS



OPEN COLLAR AND CLASSIC MINI CHECK DETAIL

### NEW

CW-UB-200-A

### LADIES 3/4 SLEEVE ASHFORD SHIRT

**Weight** 105g/m2 **Fabric** 60% polyester, 40% cotton • classic mini check fabric • open neck collar • 3/4 cuffed sleeves with slits • features front and back darts for shaping • curved hem

BL BU

HALF CHEST (CM) STANDARD FIT

S	M	L	XL	2XL	3XL	4XL
49	52	55	58	61	64	67



Built for comfort, **DESIGNED TO STRETCH** - a button-up that moves with you



**NEW**

CW-UB-190-A  
**MENS LONG SLEEVE SHEFFIELD STRETCH SHIRT**

**Weight** 115g/m2 **Fabric** 80% polyester, 17% cotton, 3% spandex  
 • lightweight stretch fabric ensures comfort and ease of movement  
 • button down collar • adjustable two button cuff • back yoke with shoulder pleats • curved hem

BL N

HALF CHEST (CM) STANDARD FIT

S	M	L	XL	2XL	3XL	4XL	5XL
54	57	60	63	66	69	72	75

**NEW**

CW-UB-192-A  
**LADIES LONG SLEEVE SHEFFIELD STRETCH SHIRT**

**Weight** 115g/m2 **Fabric** 80% polyester, 17% cotton, 3% spandex  
 • lightweight stretch fabric ensures comfort and ease of movement  
 • open neck collar • adjustable two button cuff • features front and back darts for shaping • back yoke • curved hem

BL N

HALF CHEST (CM) STANDARD FIT

S	M	L	XL	2XL	3XL	4XL
49	52	55	58	61	64	67

BAS-7758

**MENS LONG SLEEVE KENSINGTON SHIRT**

**Weight** 105g/m **Fabric** 65% polyester, 35% cotton poplin • tonal buttons  
 • chest pocket • back yoke with knife pleats  
 • adjustable two button cuff • curved hem

BL GY LB N

HALF CHEST (CM) STANDARD FIT

S	M	L	XL	2XL	3XL	4XL	5XL
55	58	61	64	67	70	73	76

BAS-7759

**LADIES LONG SLEEVE KENSINGTON SHIRT**

**Weight** 105g/m **Fabric** 65% polyester, 35% cotton poplin • tonal buttons  
 • two chest pockets with button down flap • two button cuff • front and back darts • back yoke • curved hem

BL GY LB N

HALF CHEST (CM) STANDARD FIT

S	M	L	XL	2XL	3XL	4XL
48	51	54	57	60	63	66



**STYLE AND COMFORT,**  
wrapped up in 100% cotton  
cross hatch denim.



BA S-1 120 4  
**MENSLONG SLEEVE  
EASTWOOD SHIRT**  
Weight 5.2oz Fabric 100% cotton, cross  
hatch denim • two front pockets • back yoke  
with two knife pleats

BU

HALF CHEST (CM) STANDARD FIT

S	M	L	XL	2XL	3XL	4XL	5XL
55	58	61	64	67	70	73	76



**NEW**

CW-UB-191-A  
**MENS SHORT SLEEVE  
SHEFFIELD STRETCH SHIRT**

Weight 115g/m2 Fabric 80% polyester, 17% cotton, 3% spandex  
• lightweight stretch fabric ensures comfort and ease of  
movement • button down collar • back yoke with shoulder  
pleats • curved hem

W

BL N

HALF CHEST (CM) STANDARD FIT

S	M	L	XL	2XL	3XL	4XL	5XL
54	57	60	63	66	69	72	75

**NEW**

CW-UB-193-A  
**LADIES SHORT SLEEVE  
SHEFFIELD STRETCH SHIRT**

Weight 115g/m2 Fabric 80% polyester, 17% cotton, 3% spandex  
• lightweight stretch fabric ensures comfort and ease of  
movement • open neck collar • features front and back darts for  
shaping • back yoke • curved hem

W

BL N

HALF CHEST (CM) STANDARD FIT

S	M	L	XL	2XL	3XL	4XL
49	52	55	58	61	64	67



BAS-11208

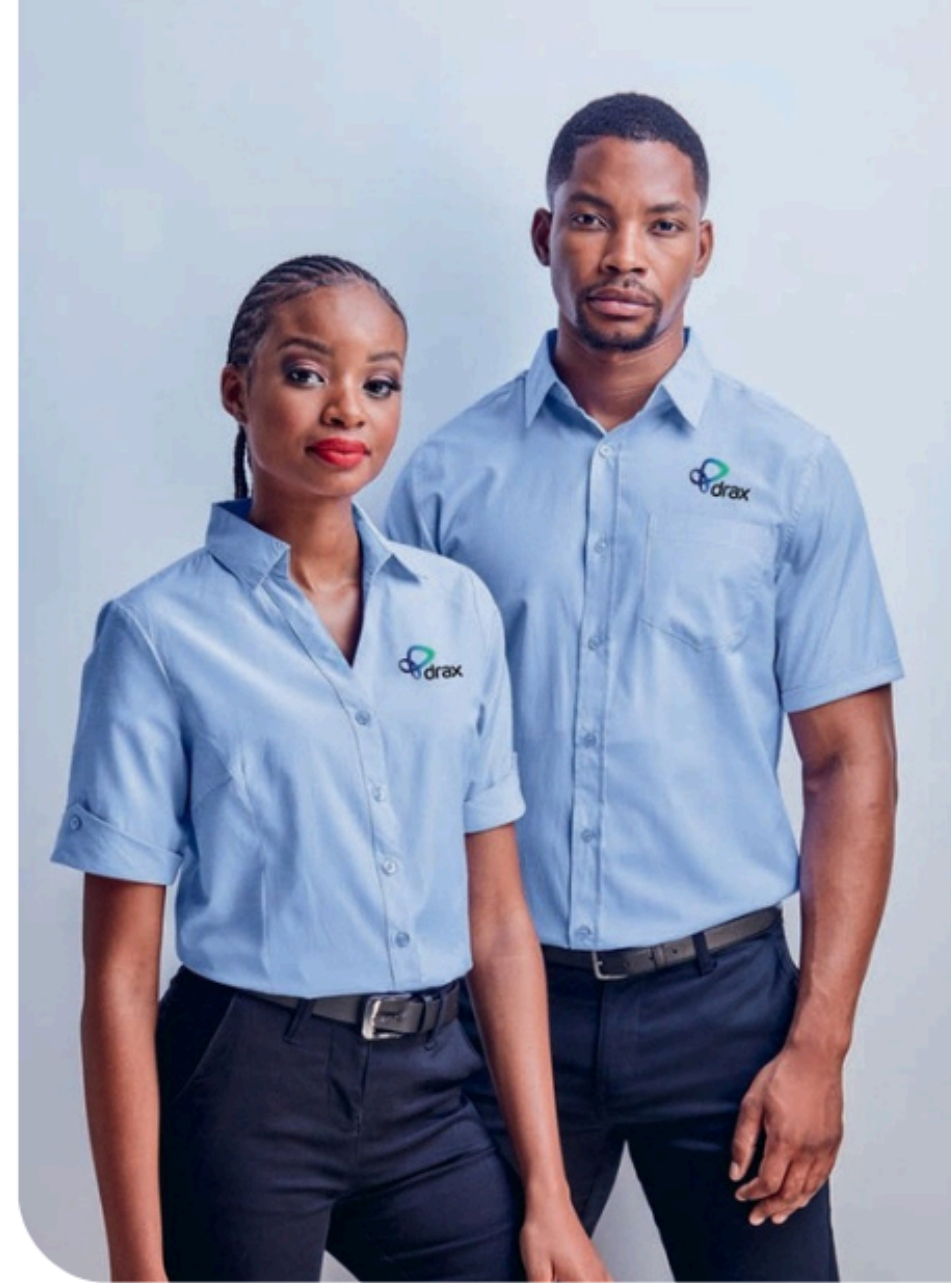
### LADIES LONG SLEEVE ZENOBIA BLOUSE

**Weight** 100g/m2 **Fabric** 100% polyester  
• mandarin collar with two pleats  
• double placket down centre front  
• keyhole and pleat detail at cuff with one button  
• back yoke with box pleat

BL N

HALF CHEST (CM) STANDARD FIT

S	M	L	XL	2XL	3XL	4XL
49	52	55	58	61	64	67



YARN-DYED STRIPE DETAIL



ADJUSTABLE CUFFS ON LONG SLEEVE SHIRTS



OPEN COLLAR ON LADIES SHIRTS

ALT-NAMS

### MENS SHORT SLEEVE NORTHAMPTON SHIRT

**Weight** 110g/m2 **Fabric** 65% polyester, 35% cotton, yarn-dyed stripe • chest pocket • branded buttons • turn-up at sleeve

BL RB SB

HALF CHEST (CM) STANDARD FIT

S	M	L	XL	2XL	3XL	4XL	5XL
52	56	60	64	68	72	76	80

ALT-NALS

### LADIES SHORT SLEEVE NORTHAMPTON SHIRT

**Weight** 110g/m2 **Fabric** 65% polyester, 35% cotton, yarn-dyed stripe • open collar • front and back darts for shaping • turn-up cuffs • curved hem with side slits

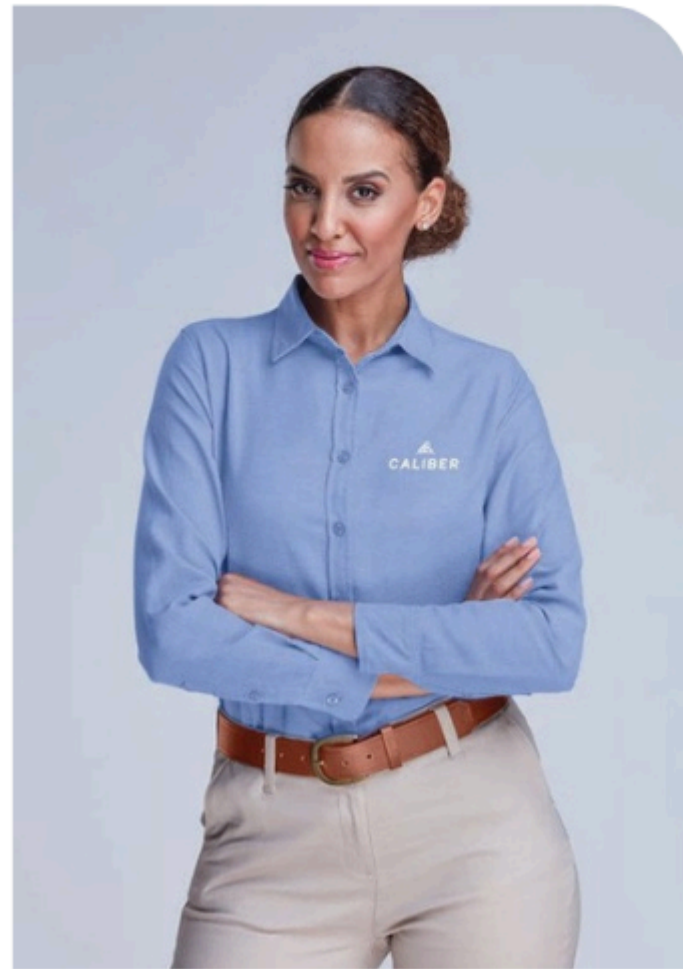
BL RB SB

HALF CHEST (CM) STANDARD FIT

S	M	L	XL	2XL	3XL	4XL
45	49	53	57	61	65	69

ALT-NAML, ALT-NALL, ALT-NAMS & ALT-NALS ARE AVAILABLE IN THE 3 COLOURS SHOWN ON THIS PAGE





CW-AL-181-A  
**MENSLONGSLEEVE OXFORD SHIRT**

**Weight** 120g/m2 **Fabric** 80% polyester, 20% cotton • oxford weave • chest pocket • adjustable two button cuff • back yoke with box pleat • curved hem

DG SB

HALF CHEST (CM) STANDARD FIT

S	M	L	XL	2XL	3XL	4XL	5XL
54	57	60	63	66	69	72	75

CW-AL-182-A  
**LADIESLONG SLEEVE OXFORD SHIRT**

**Weight** 120g/m2 **Fabric** 80% polyester, 20% cotton • oxford weave • bust darts • adjustable two button cuff • curved hem with side slits

DG SB

HALF CHEST (CM) STANDARD FIT

S	M	L	XL	2XL	3XL	4XL
49	52	55	58	61	64	67



B A S -1 0261  
**LADIESLONG SLEEVE CAROLINA SHIRT**

**Weight** 105g/m2 **Fabric** 60% polyester, 40% cotton, dobby weave • surface interest • open collar • front and back darts • bust darts • two button cuff • back yoke • curved hem

SB

HALF CHEST (CM) STANDARD FIT

S	M	L	XL	2XL	3XL	4XL
49	52	55	58	61	64	67



TWO BUTTON CUFF



SURFACE INTEREST DETAIL





BACK YOKE



ENGRAVED BUTTONS



ALEX VARGA SILICONE LOGO ON SLEEVE



C W -AV-18 8 -A  
**MENSLONG SLEEVE ALEX VARGA  
 HALLSTATT SHIRT**

**Weight** 120g/m**Fabric** 88%polyester, 12% modal • ultra soft and luxurious modal blend fabric with eco-friendly properties • sleek and modern design • adjustable two button cuff • engraved buttons • back yoke • curved hem • Alex Varga silicone logo



HALF CHEST (CM) STANDARD FIT								
S	M	L	XL	2XL	3XL	4XL	5XL	
53	57	61	65	69	73	77	81	

C W-AV-189 -A  
**LADIESLONG SLEEVE ALEX VARGA  
 HALLSTATT SHIRT**

**Weight** 120g/m**Fabric**88% polyester, 12% modal • ultra soft and luxurious modal blend fabric with eco-friendly properties • sleek and modern design • adjustable two button cuff • features front and back darts for shaping • engraved buttons • back yoke • curved hem • Alex Varga silicone logo



HALF CHEST (CM) STANDARD FIT							
S	M	L	XL	2XL	3XL	4XL	
48	52	56	60	64	68	72	



This work shirt, enhanced with spandex for **STRETCH AND FLEXIBILITY**, combines supreme comfort with a **LUXURIOUSLY SOFT FABRIC** for effortless movement throughout the day

**NEW**

C W -AV-18 6 -A  
**MENS LONG SLEEVE ALEX VARGA  
 SORRENTO SHIRT**

**Weight** 120g/m**Fabric** 95% polyester, 5% spandex • a crisp blend material with soft handfeel • stretch fabric ensures comfort and ease of movement • adjustable two button cuff • engraved matt buttons • back yoke • curved hem • Alex Varga silicone logo



HALF CHEST (CM) STANDARD FIT								
S	M	L	XL	2XL	3XL	4XL	5XL	
53	57	61	65	69	73	77	81	

**NEW**

C W-AV-187-A  
**LADIES LONG SLEEVE ALEX VARGA  
 SORRENTO SHIRT**

**Weight** 120g/m**Fabric** 95% polyester, 5% spandex • a crisp blend material with soft handfeel • stretch fabric ensures comfort and ease of movement • adjustable two button cuff • concealed placket with engraved matt buttons • front and back darts for shaping • curved hem • Alex Varga silicone logo



HALF CHEST (CM) STANDARD FIT							
S	M	L	XL	2XL	3XL	4XL	
46	50	54	58	62	66	70	





**NEW**

CW-UB-198-A  
**MENS LONG SLEEVE ASHFORD SHIRT**

**Weight** 105g/m2 **Fabric** 60% polyester, 40% cotton • classic mini check fabric • button down collar • adjustable two button cuff • back yoke with shoulder pleats • curved hem

BL BU

HALF CHEST (CM) STANDARD FIT

S	M	L	XL	2XL	3XL	4XL	5XL
54	57	60	63	66	69	72	75



CW-UB-198-A & CW-UB-199-A ARE AVAILABLE IN THE 2 COLOURS SHOWN ON THIS PAGE

**NEW**

CW-UB-199-A  
**MENS SHORT SLEEVE ASHFORD SHIRT**

**Weight** 105g/m2 **Fabric** 60% polyester, 40% cotton • classic mini check fabric • button down collar • back yoke with shoulder pleats • curved hem

BL BU

HALF CHEST (CM) STANDARD FIT

S	M	L	XL	2XL	3XL	4XL	5XL
54	57	60	63	66	69	72	75

BAS-3418

**MENSSHORT SLEEVE ASTON SHIRT**

**Weight** 95g/m2 **Fabric** 60% polyester, 40% cotton, yarn-dyed check poplin • tonal buttons • chest pocket • back yoke with knife pleats • curved hem

BL GY LB N

HALF CHEST (CM) STANDARD FIT

S	M	L	XL	2XL	3XL	4XL	5XL
55	58	61	64	67	70	73	76



BAS-3420

**LADIESSHORT SLEEVE ASTON SHIRT**

**Weight** 95g/m2 **Fabric** 60% polyester, 40% cotton, yarn-dyed check poplin • tonal buttons • chest pocket • side slits • back yoke • curved hem

BL GY LB N

HALF CHEST (CM) STANDARD FIT

S	M	L	XL	2XL	3XL	4XL
48	51	54	57	60	63	66





A versatile style,  
crafted from  
**100% MOISTURE  
ABSORBENT**  
cotton twill.



**CLASSIC STYLE** with  
**DURABLE TWILL**  
for lasting comfort  
and wear

BAS-7770  
**MEN'S SHORT SLEEVE MILANO SHIRT**

**Weight** 150g/m **Fabric** 100% cotton twill • tonal buttons  
• chest pocket • back yoke with box pleat • curved hem



HALF CHEST (CM) STANDARD FIT

S	M	L	XL	2XL	3XL	4XL	5XL
55	58	61	64	67	70	73	76

BAS-7771  
**LADIES SHORT SLEEVE MILANO SHIRT**

**Weight** 150g/m **Fabric** 100% cotton twill • tonal buttons  
• front and back darts • back yoke



HALF CHEST (CM) STANDARD FIT

S	M	L	XL	2XL	3XL	4XL
48	51	54	57	60	63	66

**NEW**  
CW-UB-195-A  
**MEN'S SHORT SLEEVE MODERNA  
TWILL SHIRT**

**Weight** 145g/m<sup>2</sup> **Fabric** 100% cotton twill • button down collar  
• back yoke with shoulder pleats • curved hem



HALF CHEST (CM) STANDARD FIT

S	M	L	XL	2XL	3XL	4XL	5XL
54	57	60	63	66	69	72	75

**NEW**  
CW-UB-197-A  
**LADIES SHORT SLEEVE MODERNA  
TWILL SHIRT**

**Weight** 145g/m<sup>2</sup> **Fabric** 100% cotton twill • open neck collar  
• features front and back darts for shaping • back yoke • curved hem



HALF CHEST (CM) STANDARD FIT

S	M	L	XL	2XL	3XL	4XL
49	52	55	58	61	64	67



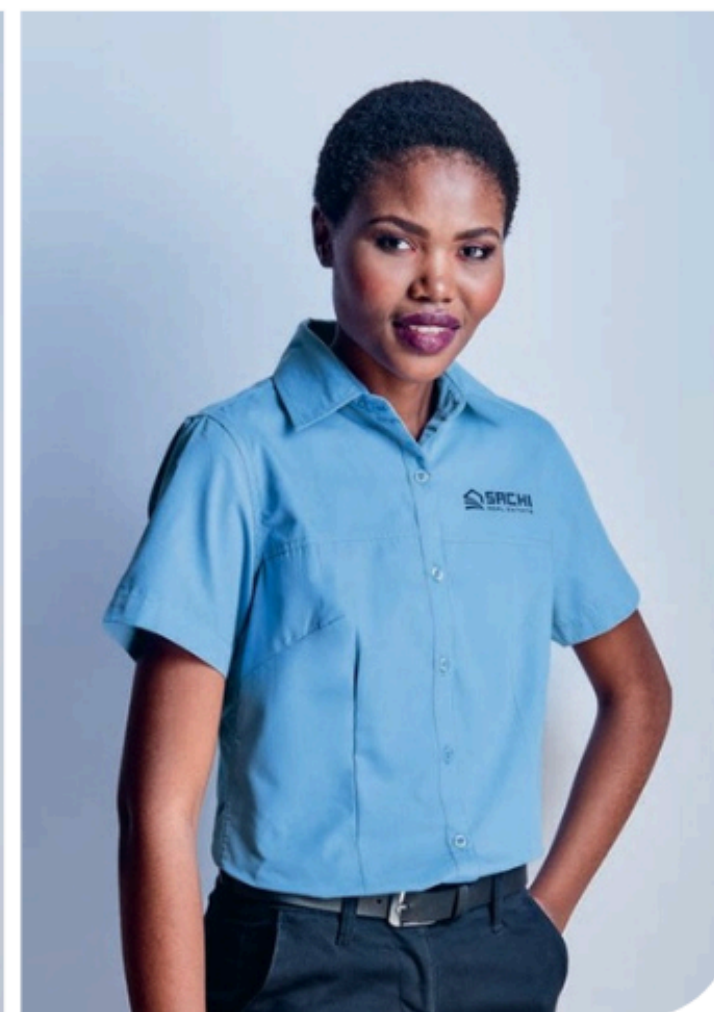
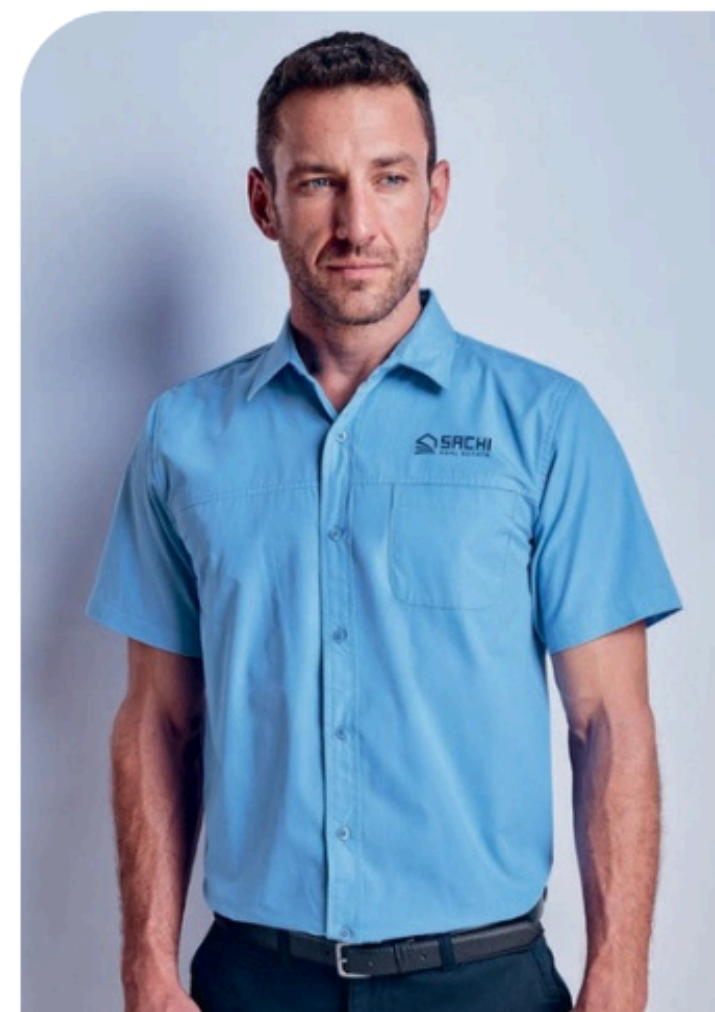
BA S-11205  
**LADIESLONG SLEEVE  
 EASTWOOD SHIRT**

**Weight** 5.2oz **Fabric** 100% cotton, cross hatch denim • two v front pockets with button down flap • front darts • curved hem

BU

HALF CHEST (CM) STANDARD FIT

S	M	L	XL	2XL	3XL	4XL
48	51	54	57	60	63	66



ALT-EPMS  
**MENSSHORT SLEEVE EMPIRE SHIRT**

**Weight** 135g/m2 **Fabric** 65% polyester, 35% cotton poplin • concealed left chest pocket

BL N SB

HALF CHEST (CM) STANDARD FIT

S	M	L	XL	2XL	3XL	4XL	5XL
52	56	60	64	68	72	76	80

ALT-EPLS  
**LADIESSHORT SLEEVE EMPIRE SHIRT**

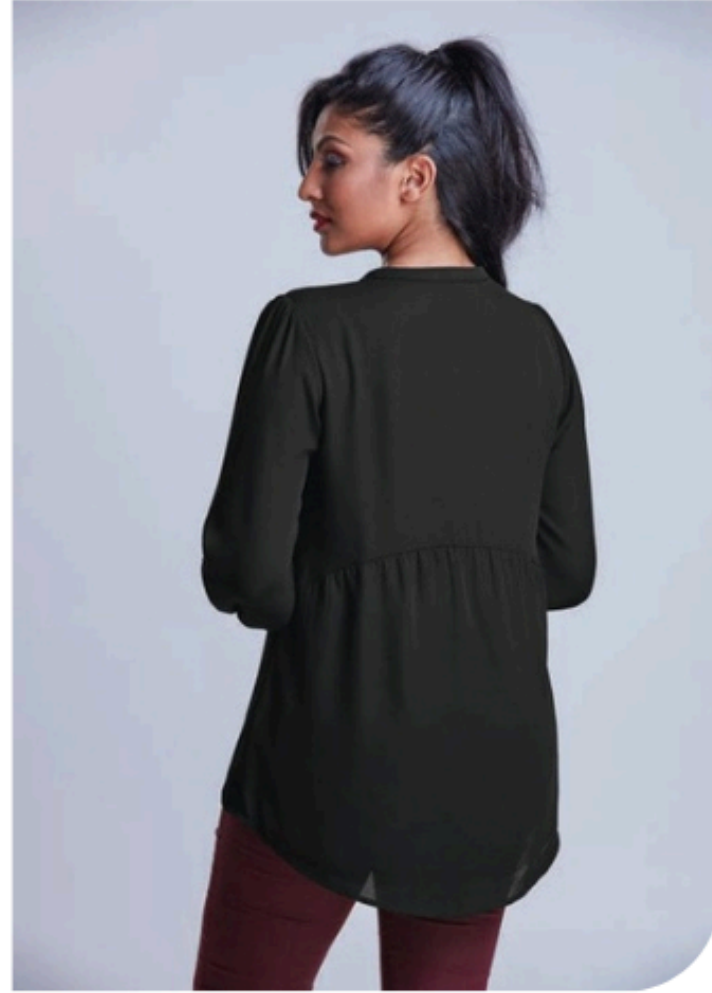
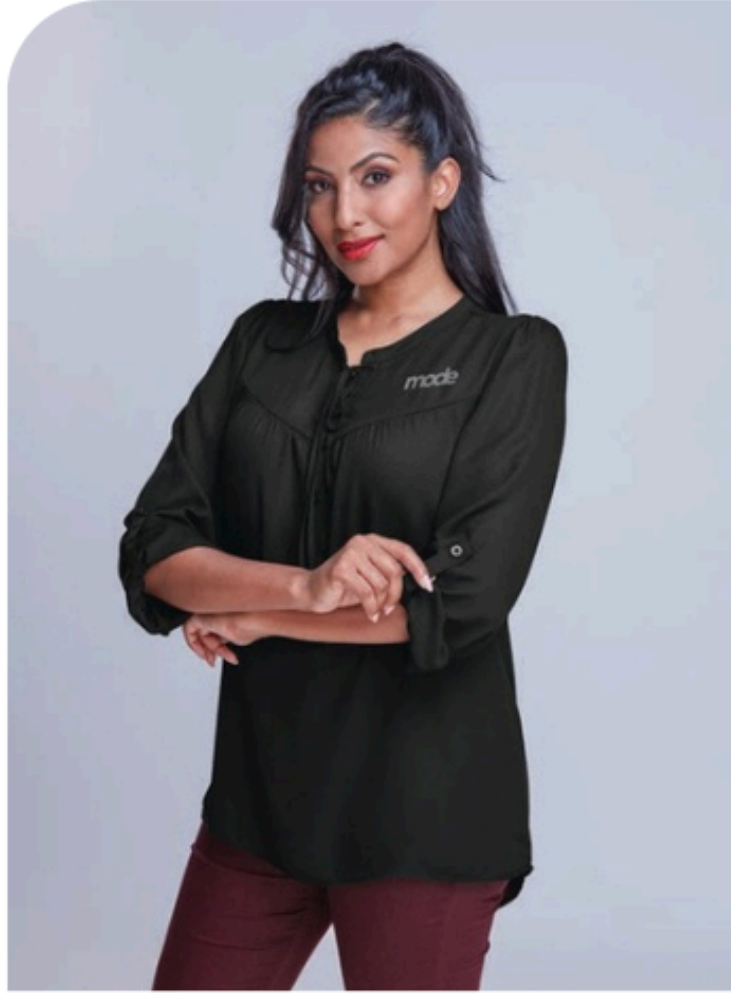
**Weight** 135g/m2 **Fabric** 65% polyester, 35% cotton poplin • side slits • front and back yoke

BL N SB

HALF CHEST (CM) STANDARD FIT

S	M	L	XL	2XL	3XL	4XL
45	49	53	57	61	65	69





CW-UB-185-A  
**LADIES LONG SLEEVE  
 CANDICE BLOUSE**

**Weight** 130g/m2 **Fabric** 100% polyester • mandarin collar with ties • pleated front and back panel design • three button placket • longer back length • long sleeves features single buttoned cuff • roll up sleeve with tab and button

BL GY N

HALF CHEST (CM) STANDARD FIT

S	M	L	XL	2XL	3XL	4XL
47	50	53	56	59	62	65



BAS-10260  
**MENSLONG SLEEVE CAROLINA SHIRT**

**Weight** 105g/m2 **Fabric** 60% polyester, 40% cotton, dobby weave • surface interest • chest pocket • two button cuff • back yoke with box pleat

SB

HALF CHEST (CM) STANDARD FIT

S	M	L	XL	2XL	3XL	4XL	5XL
55	58	61	64	67	70	73	76



TWO BUTTON CUFF



SURFACE INTEREST DETAIL

# K121 STRIPE SHIRT RANGE

CottonRichYarnDyedItalianStripe|55% Cotton,45% Polyester



MENS S/S IN K121 NAVY



MENS L/S IN K121 NAVY



LADIES 3/4 IN K121 NAVY

## MENS SHIRTS

### S/S: SD1-121

- SIZES S - 5XL
- Regular fit short sleeve shirt
- Back knife pleats for extra comfort
- Two-piece button-down collar

### L/S: SD2-121

- SIZES S - 5XL
- Regular fit long sleeve shirt
- Back knife pleats for extra comfort
- Two-piece button-down collar

### MENS SIZING CHART:

SIZES:	S	M	L	XL	2XL	3XL	4XL	5XL
HALF CHEST (CM):	54	58	62	66	70	74	78	82

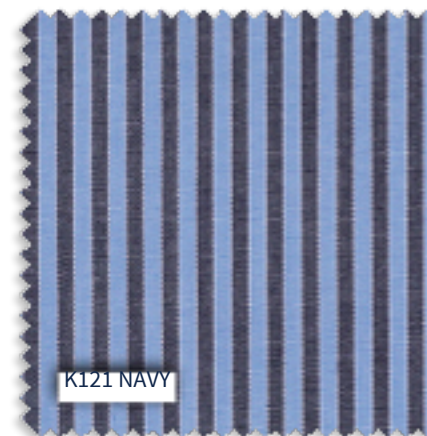
## LADIES BLOUSES

### JACQUI 3/4: BJ6-121

- SIZES 28 - 50
- Semi-fitted 3/4 sleeve blouse
- Front and back darts
- Side vents

### LADIES SIZING CHART:

SIZES:	28	30	32	34	36	38	40	42	44	46	48	50
HALF BUST (CM):	44	46.5	49	51.5	54	56.5	59	61.5	64	66.5	69	71.5



K121 NAVY



# K122 STRIPE SHIRT RANGE

Cotton Rich Yarn Dyed Stripe | 55% Cotton, 45% Polyester



MENS S/S IN K122 COBALT

MENS L/S IN K122 COBALT

LADIES 3/4 IN K122 COBALT

## MENS SHIRTS

**S/S: SA5-122**

• **SIZES S – 5XL**

- Regular fit short sleeve shirt
- Two-piece cutaway collar
- Back knife pleats for extra comfort

**L/S: SA6-122**

• **SIZES S – 5XL**

- Regular fit long sleeve shirt
- Two-piece cutaway collar
- Back knife pleats for extra comfort

**MENS SIZING CHART:**

SIZES:	S	M	L	XL	2XL	3XL	4XL	5XL
HALF CHEST (CM):	54	58	62	66	70	74	78	82

## LADIES BLOUSES

**JACQUI 3/4: BJ6-122**

• **SIZES 28 – 50**

- Semi-fitted 3/4 sleeve blouse with pocket
- Front and back darts
- Side vents

**LADIES SIZING CHART:**

SIZES:	28	30	32	34	36	38	40	42	44	46	48	50
HALF BUST (CM):	44	46.5	49	51.5	54	56.5	59	61.5	64	66.5	69	71.5



K122 COBALT



# K202 STRIPE SHIRT RANGE

Cotton Rich Yarn Dyed Stripe | 60% Cotton, 40% Polyester



## MENS SHIRTS

### S/S: SD1-202

- SIZES S – 5XL
- Regular fit short sleeve shirt
- Two-piece button-down collar
- Back knife pleats for extra comfort

### L/S: SD2-202

- SIZES S – 5XL
- Regular fit long sleeve shirt
- Two-piece button-down collar
- Back knife pleats for extra comfort

### MENS SIZING CHART:

SIZES:	S	M	L	XL	2XL	3XL	4XL	5XL
HALF CHEST (CM):	54	58	62	66	70	74	78	82

## LADIES BLOUSES

### ANGELIQUE S/S: BAT-202

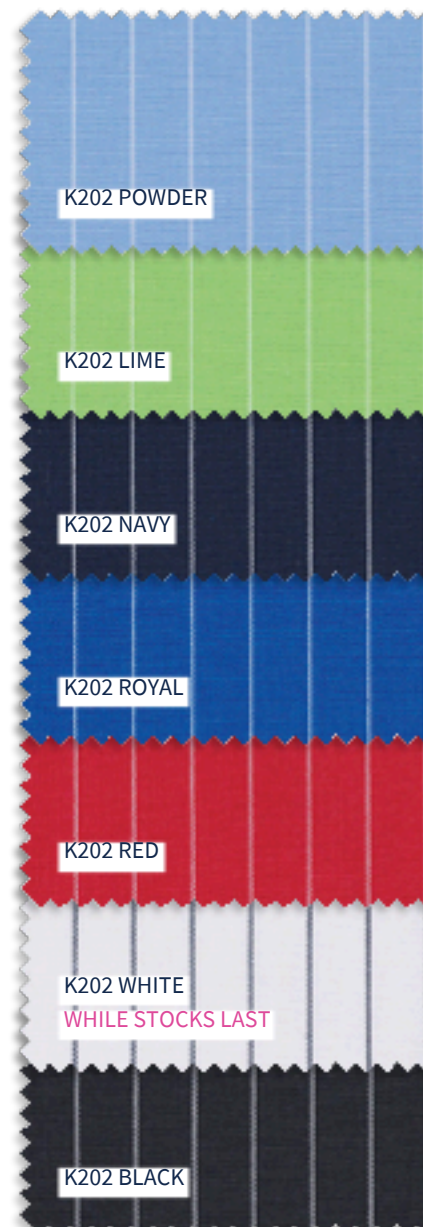
- SIZES 28 – 50
- Semi-fitted short sleeve blouse
- Front and back darts
- Side vents
- Tab detail on cuff

### WENDY 3/4: BQ6-202

- SIZES 28 – 50
- Semi-fitted 3/4 sleeve blouse
- Front and back darts
- Side vents
- While stocks last

### LADIES SIZING CHART:

SIZES:	28	30	32	34	36	38	40	42	44	46	48	50
HALF BUST (CM):	44.5	47	49.5	52	54.5	57	59.5	62	64.5	67.5	70.5	73.5



# K203/204 STRIPE SHIRT RANGE

Cotton Rich Yarn Dyed Stripe | 60% Cotton, 40% Polyester



MENS S/S IN K203 CHARCOAL



MENS L/S IN K204 FRENCH BLUE



LADIES 3/4 IN K203 CHARCOAL



LADIES L/S IN K204 FRENCH BLUE

## MENS SHIRTS

S/S: SA5-203/204

- SIZES S - 5XL
- Regular fit short sleeve shirt
- Two-piece cutaway collar
- Back knife pleats for extra comfort

L/S: SA6-203/204

- SIZES S - 5XL
- Regular fit long sleeve shirt
- Two-piece cutaway collar
- Back knife pleats for extra comfort

MENS SIZING CHART:

SIZES:	S	M	L	XL	2XL	3XL	4XL	5XL
HALF CHEST (CM):	54	58	62	66	70	74	78	82

## LADIES BLOUSES

WENDY 3/4: BQ6-203/204

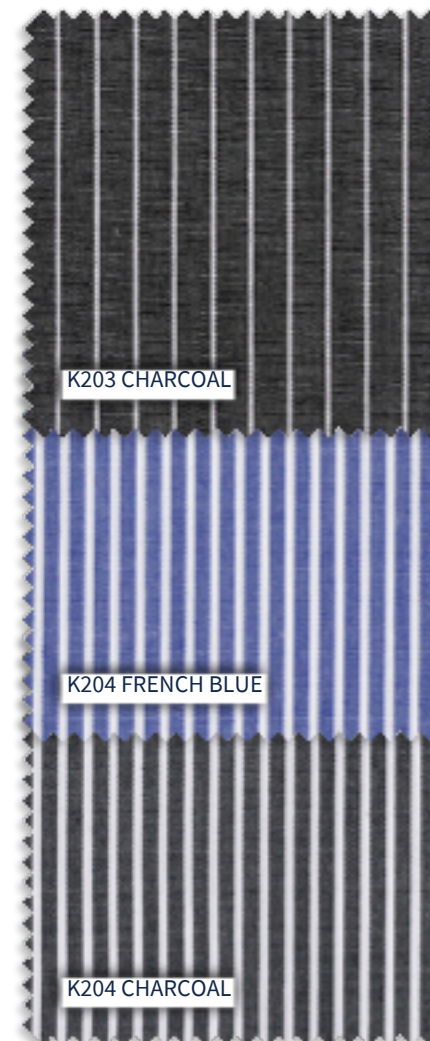
- SIZES 28 - 50
- Semi-fitted 3/4 sleeve blouse
- Front and back darts
- Side vents

WENDY L/S: BQ2-203/204

- SIZES 28 - 50
- Semi-fitted long sleeve blouse
- Front and back darts
- Side vents

LADIES SIZING CHART:

SIZES:	28	30	32	34	36	38	40	42	44	46	48	50
HALF BUST (CM):	44.5	47	49.5	52	54.5	57	59.5	62	64.5	67.5	70.5	73.5



# K213 STRETCH POPLIN LADIES BLOUSES

Cotton Rich Stretch Poplin | 97% Cotton, 3% Spandex



## LADIES BLOUSES

### ABBEEY 3/4: BA3-213

• **SIZES 28 – 50**

- 3/4 sleeve blouse with split cuff detail
- Fitted silhouette with darts for shape
- Curved hem for wearing tucked in or out

### SAVANNAH L/S: BS2-213

• **SIZES 28 – 50**

- Long sleeve blouse with three button cuff
- Fitted silhouette with darts for shape
- Concealed front placket
- Curved hem for wearing tucked in or out

### LADIES SIZING CHART:

SIZES:	28	30	32	34	36	38	40	42	44	46	48	50
HALF BUST (CM):	40.5	43	45.5	48	50.5	53	55.5	58	60.5	63	65.5	68



# K215 MINIMAL CHECK MENS SHIRTS

Cotton Rich Yarn Dyed Minimal Check | 55% Cotton, 45% Polyester



MENS S/S IN K215 CHARCOAL



MENS L/S IN K215 INDIGO

## MENS SHIRTS

**S/S: SA9-215**

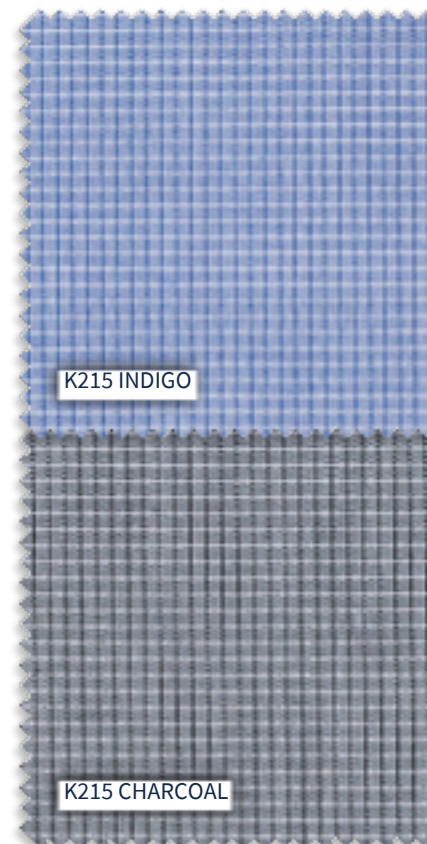
- SIZES S - 5XL
- Fashion fit short sleeve shirt
- Two-piece cutaway collar
- Back box pleat for extra comfort

**L/S: SA8-215**

- SIZES S - 5XL
- Fashion fit long sleeve shirt
- Two-piece cutaway collar
- Back box pleat for extra comfort

### MENS SIZING CHART:

SIZES:	S	M	L	XL	2XL	3XL	4XL	5XL
HALF CHEST (CM):	52	56	60	64	68	72	76	80



K215 INDIGO

K215 CHARCOAL



# K218 FINE STRIPE SHIRT RANGE

Cotton Rich Yarn Dyed Stripe | 60% Cotton, 40% Polyester



MENS S/S IN K218 GREY



MENS L/S IN K218 GREY



LADIES S/S IN K218 GREY



LADIES L/S IN K218 GREY

## MENS SHIRTS

### S/S: SA9-218

#### • SIZES S – 5XL

- Fashion fit short sleeve shirt with cutaway collar
- Posted seams
- Back box pleat for extra comfort

### L/S: SA8-218

#### • SIZES S – 5XL

- Fashion fit long sleeve shirt with cutaway collar
- Posted seams
- Back box pleat for extra comfort

### MENS SIZING CHART:

SIZES:	S	M	L	XL	2XL	3XL	4XL	5XL
HALF CHEST (CM):	52	56	60	64	68	72	76	80

## LADIES BLOUSES

### DREW S/S: BD1-218

#### • SIZES 28 – 50

- Fitted, slim silhouette short sleeve blouse
- Split cuff detail
- Front and back darts for added shaping
- Side vents
- Curved hem can be worn in or out

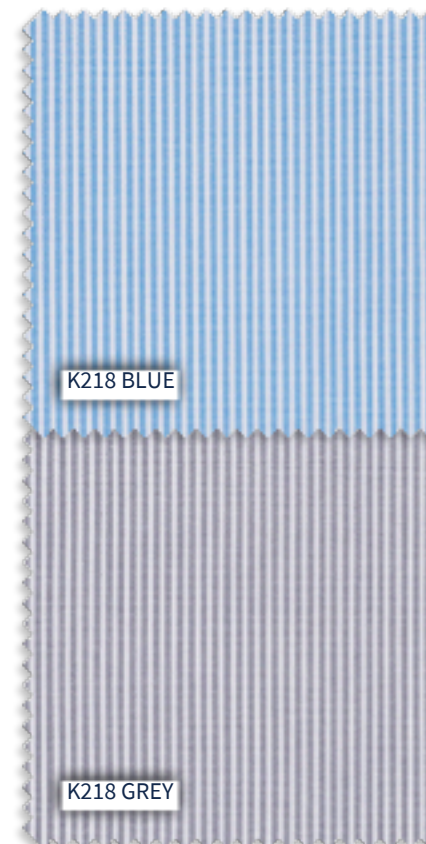
### LARA L/S: BL2-218

#### • SIZES 28 – 50

- Fitted, slim silhouette long sleeve blouse
- Two-button cuff
- Front and back darts for added shaping
- Side vents
- Curved hem can be worn in or out

### LADIES SIZING CHART:

SIZES:	28	30	32	34	36	38	40	42	44	46	48	50
HALF BUST (CM):	43	45.5	48	50.5	53	55.5	58	60.5	63	65.5	68	70.5



K218 BLUE

K218 GREY



# K224 SAFARI SHIRT RANGE

100% Polyamide Ripstop



MENS S/S IN K224 STONE



MENS L/S IN K224 KHAKE



LADIES S/S IN K224 CHARCOAL

## MENS SHIRTS

S/S: SS1-224

• SIZES S – 5XL

- Regular fit short sleeve shirt
- Airotech lightweight fabric with UPF 50+
- Premium wickable finish with soft handle
- Back yoke vent with mesh to keep cool

L/S: SS2-224

• SIZES S – 5XL

- Regular fit long sleeve shirt with roll-up tabs
- Airotech lightweight fabric with UPF 50+
- Premium wickable finish with soft handle
- Back yoke vent with mesh to keep cool

### MENS SIZING CHART:

SIZES:	S	M	L	XL	2XL	3XL	4XL	5XL
HALF CHEST (CM):	55	59	63	67	71	75	79	83

## LADIES BLOUSES

S/S: SS3-224

• SIZES 28 – 50

- Regular fit short sleeve blouse
- Airotech lightweight fabric with UPF 50+

- Premium wickable finish with soft handle
- Back yoke vent with mesh to keep cool
- Available in short sleeve only

### LADIES SIZING CHART:

SIZES:	28	30	32	34	36	38	40	42	44	46	48	50
HALF BUST (CM):	44.5	47	49.5	52	54.5	57	59.5	62	64.5	67.5	70.5	73.5



# K233 HEATH SHIRT RANGE

Cotton Rich Yarn Dyed Check | 55% Cotton, 45% Polyester



MENS S/S IN K233 NAVY & GREY



MENS L/S IN K233 NAVY & BLUE



LADIES S/S IN K233 NAVY & GREY



LADIES 3/4 IN K233 NAVY & BLUE

## MENS SHIRTS

### S/S: SA9-HEA

• SIZES S – 5XL

- Fashion fit short sleeve shirt with cutaway collar
- Contrast trim on collar stand and button stand
- Back knife pleats for extra comfort

### L/S: SA8-HEA

• SIZES S – 5XL

- Fashion fit long sleeve shirt with cutaway collar
- Contrast trim on collar stand, cuffs, gauntlets and button stand
- Back knife pleats for extra comfort

### MENS SIZING CHART:

SIZES:	S	M	L	XL	2XL	3XL	4XL	5XL
HALF CHEST (CM):	52	56	60	64	68	72	76	80

## LADIES BLOUSES

### AMBER S/S: BAM-HEA

• SIZES 28 – 50

- Semi-fitted short sleeve blouse
- Contrast trim on collar stand and button stand
- Front and back darts
- Side vents
- Turn-back cuffs

### ELLIE 3/4: BEL-HEA

• SIZES 28 – 50

- Semi-fitted fit 3/4 sleeve blouse
- Contrast trim on collar stand, cuffs, gauntlets and button stand
- Front and back darts
- Side vents
- Adjustable button cuffs

### LADIES SIZING CHART:

SIZES:	28	30	32	34	36	38	40	42	44	46	48	50
HALF BUST (CM):	43	45.5	48	50.5	53	55.5	58	60.5	63	65.5	68	70.5



K233 NAVY & GREY

K233 BLACK & GREY

K233 NAVY & BLUE



# K234 KENMORE SHIRT RANGE

Cotton Rich Yarn Dyed Check | 60% Cotton, 40% Polyester



MENS S/S IN K234 GREY



MENS L/S IN K234 ROYAL



LADIES 3/4 IN K234 BLACK

## MENS SHIRTS

### S/S: SA9-KEN

- SIZES S – 5XL
- Fashion fit short sleeve shirt with cutaway collar
- Back knife pleats for extra comfort
- Contrast trim on collar stand

### L/S: SA8-KEN

- SIZES S – 5XL
- Fashion fit long sleeve shirt with cutaway collar
- Back knife pleats for extra comfort
- Contrast trim on cuffs, gauntlets and collar stand

### MENS SIZING CHART:

SIZES:	S	M	L	XL	2XL	3XL	4XL	5XL
HALF CHEST (CM):	52	56	60	64	68	72	76	80

## LADIES BLOUSES

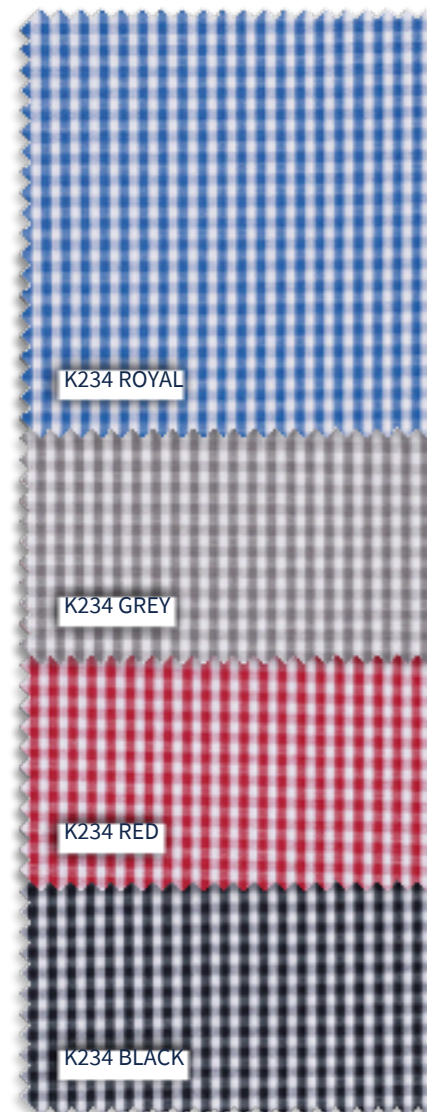
### ELLIE 3/4: BEL-KEN

- SIZES 28 – 50
- Semi-fitted fit 3/4 sleeve blouse
- Front and back darts

- Adjustable button cuffs
- Side vents
- Contrast trim on cuffs, gauntlets and collar stand lends a casual feel

### LADIES SIZING CHART:

SIZES:	28	30	32	34	36	38	40	42	44	46	48	50
HALF BUST (CM):	43	45.5	48	50.5	53	55.5	58	60.5	63	65.5	68	70.5



# K235 KINGSLEY SHIRT RANGE

Cotton Rich Yarn Dyed Check | 60% Cotton, 40% Polyester



## MENS SHIRTS

### S/S: SA9-KIN

• SIZES S - 5XL

- Fashion fit short sleeve shirt with cutaway collar
- Contrast trim on collar stand
- Back knife pleats for extra comfort

### L/S: SA8-KIN

• SIZES S - 5XL

- Fashion fit long sleeve shirt with cutaway collar
- Contrast trim on cuffs, gauntlets and collar stand
- Back knife pleats for extra comfort

### MENS SIZING CHART:

SIZES:	S	M	L	XL	2XL	3XL	4XL	5XL
HALF CHEST (CM):	52	56	60	64	68	72	76	80

## LADIES BLOUSES

### ELLIE 3/4: BEL-KIN

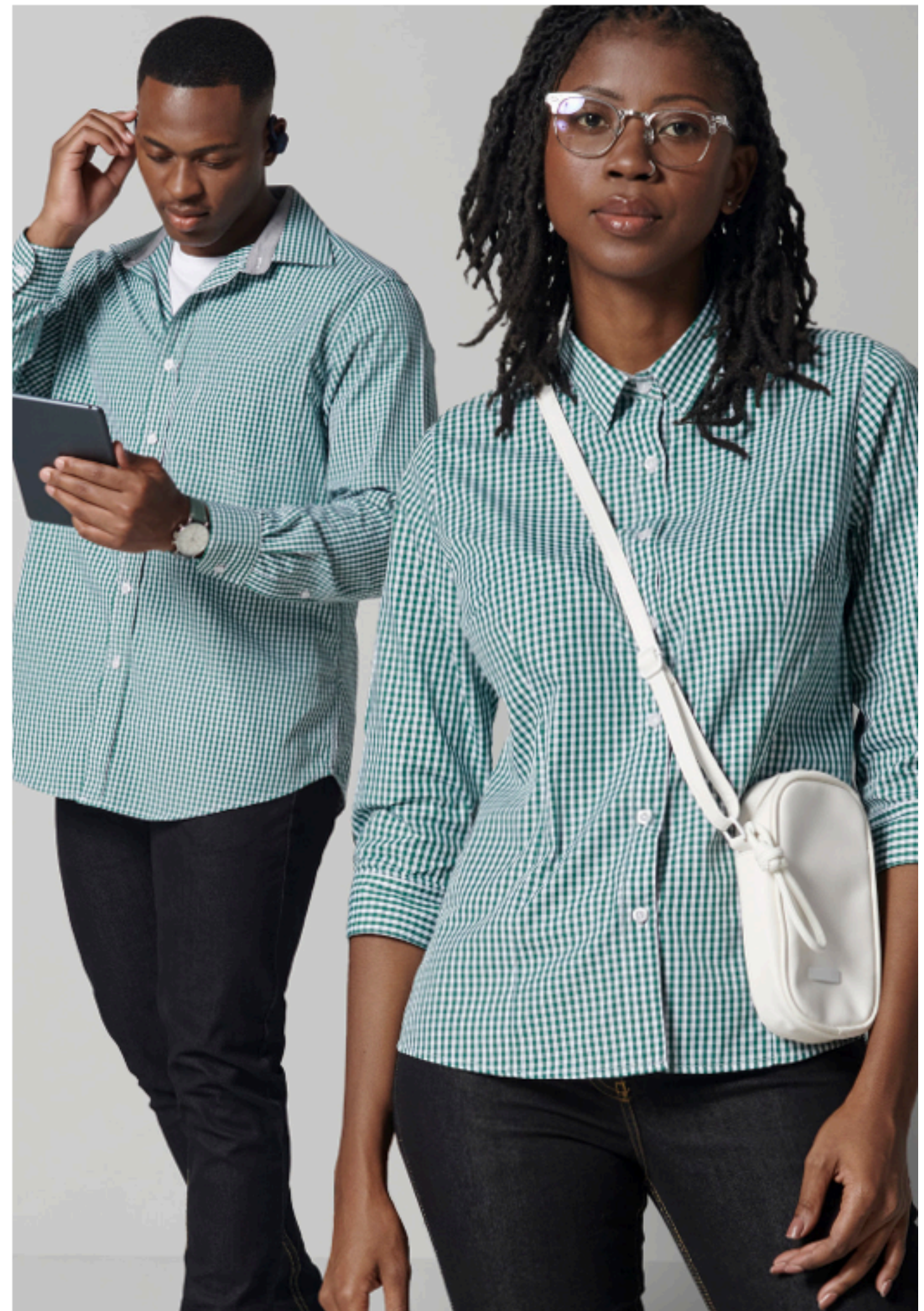
• SIZES 28 - 50

- Semi-fitted fit 3/4 sleeve blouse
- Adjustable button cuffs
- Front and back darts

- Side vents
- Contrast trim on cuffs, gauntlets and collar stand

### LADIES SIZING CHART:

SIZES:	28	30	32	34	36	38	40	42	44	46	48	50
HALF BUST (CM):	43	45.5	48	50.5	53	55.5	58	60.5	63	65.5	68	70.5



# K236 WINDSOR SHIRT RANGE

Cotton Rich Yarn Dyed Micro Check | 60% Cotton, 40% Polyester



MENS S/S IN K236 GREY



MENS L/S IN K236 SKY



LADIES S/S IN K236 GREY



LADIES 3/4 IN K236 SKY

## MENS SHIRTS

### S/S: SD6-WIN

• **SIZES S – 5XL**

- Fashion fit short sleeve shirt
- Classic two-piece button-down collar
- Posted seams
- Back knife pleats for extra comfort

### L/S: SD5-WIN

• **SIZES S – 5XL**

- Fashion fit long sleeve shirt
- Classic two-piece button-down collar
- Posted seams
- Back knife pleats for extra comfort

### MENS SIZING CHART:

SIZES:	S	M	L	XL	2XL	3XL	4XL	5XL
HALF CHEST (CM):	52	56	60	64	68	72	76	80

## LADIES BLOUSES

### AMBER S/S: BAM-WIN

• **SIZES 28 – 50**

- Semi-fitted short sleeve blouse
- Front and back darts
- Side vents
- Turn-back cuffs

### SASHA 3/4: BSA-WIN

• **SIZES 28 – 50**

- Semi-fitted 3/4 sleeve blouse
- Shaped button-trim cuffs
- Front and back darts
- Side vents

### LADIES SIZING CHART:

SIZES:	28	30	32	34	36	38	40	42	44	46	48	50
HALF BUST (CM):	43	45.5	48	50.5	53	55.5	58	60.5	63	65.5	68	70.5



K236 NAVY

K236 GREY

K236 SKY



# K237 LUCCA SHIRT RANGE

CottonRichYarnDyedDiagonalStripe|60% Cotton, 40% Polyester



MENS S/S ONLY IN K237 WHITE



MENS L/S IN K237 NAVY



LADIES S/S ONLY IN K237 WHITE



LADIES L/S K237 FRENCH BLUE

## MENS SHIRTS

### S/S: SA9-LUC (WHITE ONLY)

- SIZES S – 5XL
- Fashion fit short sleeve shirt
- Cutaway collar
- Back box pleat for extra comfort
- Exclusively available in white

### L/S: SA8-LUC

- SIZES S – 5XL
- Fashion fit long sleeve shirt
- Cutaway collar
- Back box pleat for extra comfort

#### MENS SIZING CHART:

SIZES:	S	M	L	XL	2XL	3XL	4XL	5XL
HALF CHEST (CM):	52	56	60	64	68	72	76	80

## LADIES BLOUSES

### JADE S/S: BJA-LUC (WHITE ONLY)

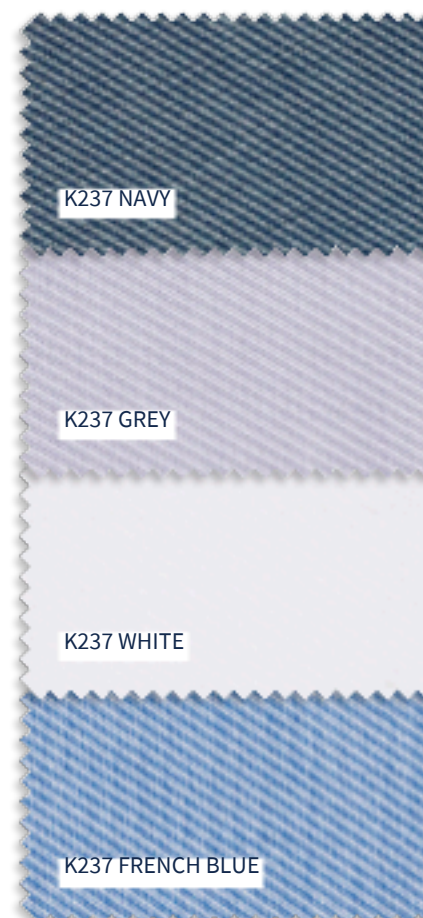
- SIZES 28 – 50
- Semi-fitted short sleeve blouse with pocket
- Front and back darts
- Side vents
- Turn-back cuffs
- Exclusively available in white

### SERENA L/S: BSE-LUC

- SIZES 28 – 50
- Semi-fitted long sleeve blouse with pocket
- Front and back darts
- Side vents
- Three-button cuff

#### LADIES SIZING CHART:

SIZES:	28	30	32	34	36	38	40	42	44	46	48	50
HALF BUST (CM):	43	45.5	48	50.5	53	55.5	58	60.5	63	65.5	68	70.5



# K238 AVERY SHIRT RANGE

Silky Cotton | 100% Cotton



MENS S/S IN K238 SLATE

MENS L/S IN K238 SLATE

LADIES S/S IN K238 SLATE

LADIES L/S IN K238 SLATE

## MENS SHIRTS

**S/S: SA9-AVE**

• **SIZES S – 5XL**

- Fashion fit short sleeve shirt with cutaway collar
- Back box pleat for extra comfort

**L/S: SA8-AVE**

• **SIZES S – 5XL**

- Fashion fit long sleeve shirt with cutaway collar
- Back box pleat for extra comfort

### MENS SIZING CHART:

<b>SIZES:</b>	S	M	L	XL	2XL	3XL	4XL	5XL
<b>HALF CHEST (CM):</b>	52	56	60	64	68	72	76	80

## LADIES BLOUSES

**CLAUDIA S/S : BCL-AVE**

• **SIZES 28 – 50**

- Semi-fitted short sleeve blouse
- Front chest pocket
- Front and back darts
- Side vents
- Turn-back cuffs with tabs

**JENNA L/S: BJE-AVE**

• **SIZES 28 – 50**

- Semi-fitted long sleeve blouse
- Front chest pocket
- Front and back darts
- Side vents
- Three-button cuffs

### LADIES SIZING CHART:

<b>SIZES:</b>	28	30	32	34	36	38	40	42	44	46	48	50
<b>HALF BUST (CM):</b>	43	45.5	48	50.5	53	55.5	58	60.5	63	65.5	68	70.5



K238 INDIGO

K238 SLATE



# K239 TIVOLI LONG SLEEVE SHIRTS

Cotton Rich Yarn Dyed Check | 60% Cotton, 40% Polyester



## MENS SHIRT

L/S: SA8-TIV

• SIZES S - 5XL

- Fashion fit long sleeve shirt with cutaway collar
- Back box pleat for extra comfort

MENS SIZING CHART:

SIZES:	S	M	L	XL	2XL	3XL	4XL	5XL
HALF CHEST (CM):	52	56	60	64	68	72	76	80

## LADIES BLOUSE

SERENA L/S: BSE-TIV

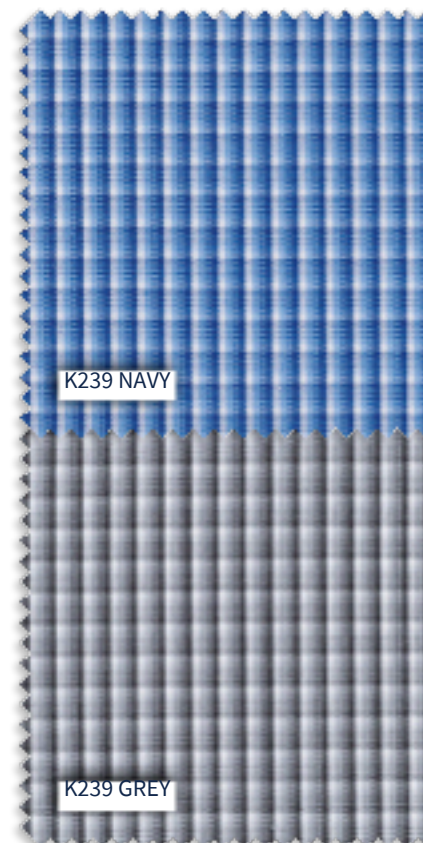
• SIZES 28 - 50

- Semi-fitted long sleeve blouse
- Front and back darts

- Side vents Three-
- button cuffs Front
- chest pocket

LADIES SIZING CHART:

SIZES:	28	30	32	34	36	38	40	42	44	46	48	50
HALF BUST (CM):	43	45.5	48	50.5	53	55.5	58	60.5	63	65.5	68	70.5



# K240 REMINGTON MENS SHIRTS

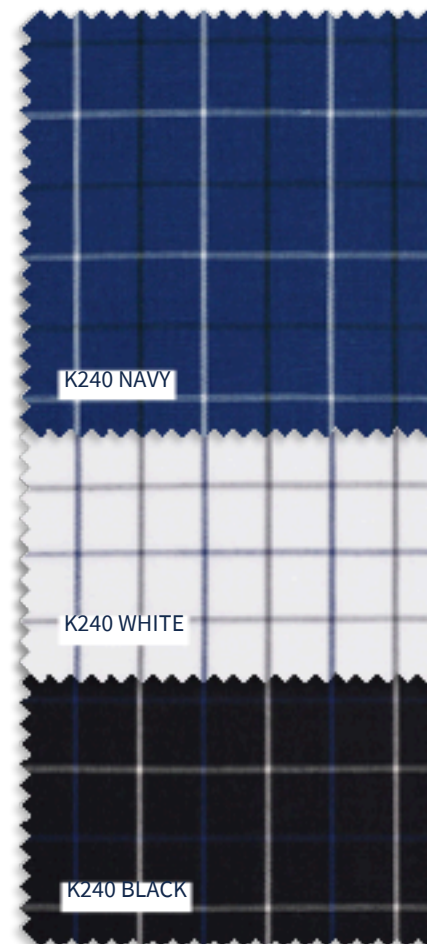
Cotton Rich Yarn Dyed Check | 55% Cotton, 45% Polyester



MENS S/S IN K240 NAVY



MENS L/S IN K240 NAVY



K240 NAVY

K240 WHITE

K240 BLACK

## MENS SHIRTS

### S/S: SD1-REM

- SIZES S - 5XL
- Regular fit short sleeve shirt
- Two-piece button-down collar
- Back box pleat for extra comfort

### L/S: SD2-REM

- SIZES S - 5XL
- Regular fit long sleeve shirt
- Two-piece button-down collar
- Back box pleat for extra comfort

### MENS SIZING CHART:

SIZES:	S	M	L	XL	2XL	3XL	4XL	5XL
HALF CHEST (CM):	54	58	62	66	70	74	78	82



# K243 MILLER SHIRT RANGE

Yarn Dyed Twill | 100% Cotton



MENS S/S IN K243 WHITE



MENS L/S IN K243 STONE



LADIES S/S IN K243 BOTTLE GREEN



LADIES L/S IN K243 FRENCH BLUE

## MENS SHIRTS

### S/S: SA9-MIL

#### • SIZES S – 5XL

- Fashion fit short sleeve shirt with cutaway collar
- Posted seams
- Back knife pleats for extra comfort
- Contrast trim in collar stand, button stand and pocket tipping

### L/S: SA8-MIL

- SIZES S – 5XL
- Fashion fit long sleeve shirt with cutaway collar
- Posted seams
- Back knife pleats for extra comfort
- Contrast trim in collar stand, button stand and pocket tipping

gauntlets and pocket tipping

### MENS SIZING CHART:

SIZES:	S	M	L	XL	2XL	3XL	4XL	5XL
HALF CHEST (CM):	52	56	60	64	68	72	76	80

## LADIES BLOUSES

### KENDRA S/S: BKE-MIL

#### • SIZES 28 – 50

- Semi-fitted short sleeve blouse
- Front and back darts
- Side vents
- Turn-back cuffs
- Contrast trim in collar stand, button stand and pocket tipping

### DAKOTA L/S: BDA-MIL

#### • SIZES 28 – 50

- Semi-fitted long sleeve blouse
- Front and back darts
- Side vents
- Button cuffs
- Contrast trim in collar stand, button stand, gauntlets and pocket tipping

### LADIES SIZING CHART:

SIZES:	28	30	32	34	36	38	40	42	44	46	48	50
HALF BUST (CM):	43	45.5	48	50.5	53	55.5	58	60.5	63	65.5	68	70.5



With their signature diagonal weave, our tasteful Miller brushed cotton twill shirts drape beautifully, and feature contrast trims for an understated style.

# K254 FORREST SHIRT RANGE

Cotton Peached Twill | 100% Cotton



MENS S/S IN K254 NAVY



MENS L/S IN K254 BLACK



LADIES S/S IN K254 WHITE

## MENS SHIRTS

S/S: SB5-FOR

• SIZES S - 5XL

- Regular fit mens short sleeve shirt
  - Two-piece slim collar
  - Front and back yokes
- Patch pockets with inverted pleats and button down mitered flaps
- Twin needle topstitching

L/S: SB6-FOR

• SIZES S - 5XL

- Regular fit mens long sleeve shirt
  - Two-piece slim collar
  - Front and back yokes
- Patch pockets with inverted pleats and button down mitered flaps
- Twin needle topstitching

MENS SIZING CHART:

SIZES:	S	M	L	XL	2XL	3XL	4XL	5XL
HALF CHEST (CM):	54	58	62	66	70	74	78	82

## LADIES BLOUSES

S/S: BF1-FOR

• SIZES 28 - 50

- Semi-fitted and shaped ladies short sleeve blouse
- Panelled front and back with yokes

- Patch pockets with inverted pleats and button down mitered flaps
- Twin needle topstitching
- Turn-back sleeve hems
- Available in short sleeve only for ladies

LADIES SIZING CHART:

SIZES:	28	30	32	34	36	38	40	42	44	46	48	50
HALF BUST (CM):	44.5	47	49.5	52	54.5	57	59.5	62	64.5	67.5	70.5	73.5



# K255 ELLIS SHIRT RANGE

Cotton Rich Yarn Dyed End on End | 60% Cotton, 40% Polyester



MENS S/S IN K255 SILVER GREY



MENS L/S IN K255 SILVER GREY



LADIES S/S IN K255 SILVER GREY



LADIES L/S IN K255 SILVER GREY

## MENS SHIRTS

### S/S: SA9-ELL

• **SIZES S - 5XL**

- Fashion fit short sleeve shirt
- Slimmer cutaway collar
- Smaller chest pocket
- Back knife pleats for extra comfort

### L/S: SA8-ELL

• **SIZES S - 5XL**

- Fashion fit long sleeve shirt
- Slimmer cutaway collar
- Smaller chest pocket
- Back knife pleats for extra comfort

### MENS SIZING CHART:

SIZES:	S	M	L	XL	2XL	3XL	4XL	5XL
HALF CHEST (CM):	52	56	60	64	68	72	76	80

## LADIES BLOUSES

### AMBER S/S: BAM-ELL

• **SIZES 28 - 50**

- Semi-fitted short sleeve blouse
- Front and back darts
- Side vents
- Turn-back cuffs

### CHANEL L/S: BCH-ELL

• **SIZES 28 - 50**

- Semi-fitted long sleeve blouse
- Front and back darts
- Side vents
- Adjustable button cuffs

### LADIES SIZING CHART:

SIZES:	28	30	32	34	36	38	40	42	44	46	48	50
HALF BUST (CM):	43	45.5	48	50.5	53	55.5	58	60.5	63	65.5	68	70.5



K255 SILVER GREY



K255 WHITE



K255 BLACK



# K262 SLOANE LONG SLEEVE SHIRTS

Cotton Rich Yarn Dyed Micro Check | 60% Cotton, 40% Polyester



MENS L/S IN K262 BLUE

MENS L/S IN K262 SAGE

LADIES L/S IN K262 BLUE

LADIES L/S IN K262 SAGE

## MENS SHIRTS

L/S: SB4-SLO

• SIZES S – 5XL

- Fashion fit mens long sleeve shirts
- Slimmer two-piece cutaway collar and smaller pocket for a relaxed appeal

- Decorative contrast navy buttonholes and button stitch on cuffs and gauntlets
- Without back pleats for a modern appearance
- Available in long sleeve only

MENS SIZING CHART:

SIZES:	S	M	L	XL	2XL	3XL	4XL	5XL
HALF CHEST (CM):	52	56	60	64	68	72	76	80

## LADIES BLOUSES

GILLIAN L/S: BGI-SLO

• SIZES 28 – 50

- Semi-fitted ladies long sleeve blouse
- Narrow spread collar
- Front and back darts for added shaping

- Adjustable, rounded cuffs
- Decorative contrast navy buttonholes and button stitch on cuffs
- Side vents

LADIES SIZING CHART:

SIZES:	28	30	32	34	36	38	40	42	44	46	48	50
HALF BUST (CM):	43	45.5	48	50.5	53	55.5	58	60.5	63	65.5	68	70.5



# K263 MENS HAMILTON LONG SLEEVE SHIRTS

Cotton Rich Yarn Dyed Mini Houndstooth | 60% Cotton, 40% Polyester



## MENS SHIRTS

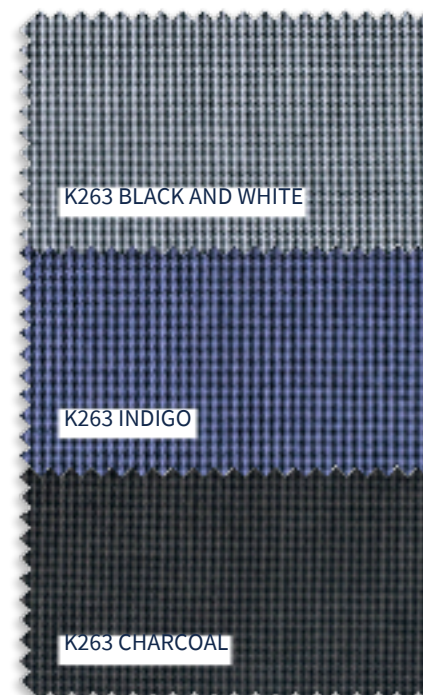
L/S: SD4-HAM

• SIZES S - 5XL

- Fashion fit mens long sleeve shirt
- Narrow button-down collar
- Adjustable cuffs
- Without back pleats and chest pocket, for modern appearance
- Available in long sleeve only

### MENS SIZING CHART:

SIZES:	S	M	L	XL	2XL	3XL	4XL	5XL
HALF CHEST (CM):	52	56	60	64	68	72	76	80



# K270 MENS SICILY LONG SLEEVE SHIRTS

Printed Pure Cotton | 100% Cotton



## MENS SHIRTS

L/S: SB9-SIC

• SIZES S - 5XL

- Fashion fit long sleeve shirt with cut-away collar
- Adjustable cuffs
- A clean, modern look without back pleats or chest pocket
- Available in long sleeve only

### MENS SIZING CHART:

SIZES:	S	M	L	XL	2XL	3XL	4XL	5XL
HALF CHEST (CM):	52	56	60	64	68	72	76	80



# K271 MENS LAMONT LONG SLEEVE SHIRTS

Printed Polycotton | 65% Polyester, 35% Cotton



## MENS SHIRTS

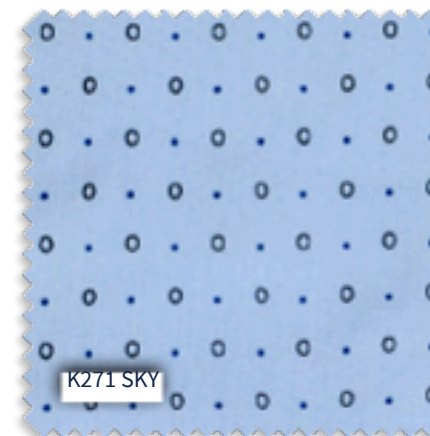
L/S: SB9-LAM

• SIZES S - 5XL

- Fashion fit mens long sleeve shirt with cut-away collar
- Adjustable cuffs
- A clean, modern look without back pleats or chest pocket
- Contrast trim in collar
- Available in long sleeve only

MENS SIZING CHART:

SIZES:	S	M	L	XL	2XL	3XL	4XL	5XL
HALF CHEST (CM):	52	56	60	64	68	72	76	80



# K372 REECE SHIRT RANGE

Cotton Rich Oxford Stripe | 60% Cotton, 40% Polyester



MENS S/S IN K372 SKY



MENS L/S IN K372 SKY



LADIES 3/4 IN K372 SKY

## MENS SHIRTS

### S/S: SD1-REE

- **SIZES S-5XL**
- Regular fit short sleeve shirt
- Classic two-piece button-down collar
- Back box pleat and posted seams

### L/S: SD2-REE

- **SIZES S - 5XL**
- Regular fit long sleeve shirt
- Classic two-piece button-down collar
- Back box pleat and posted seams

### MENS SIZING CHART:

SIZES:	S	M	L	XL	2XL	3XL	4XL	5XL
HALF CHEST (CM):	54	58	62	66	70	74	78	82

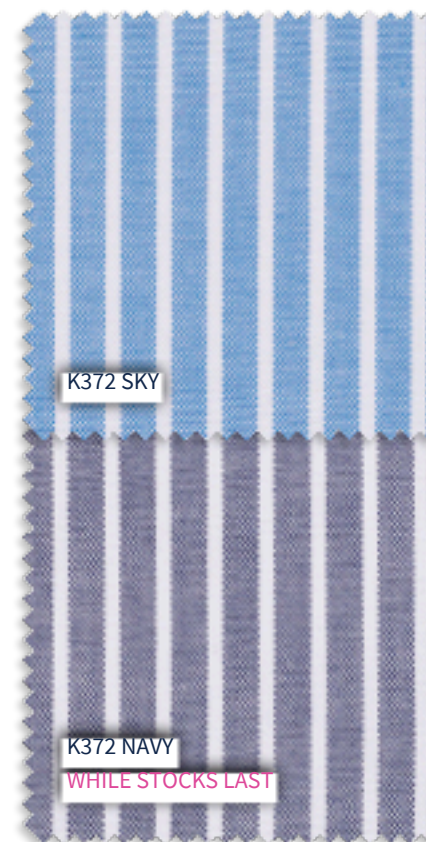
## LADIES BLOUSES

### SASHA 3/4: BSA-REE

- **SIZES 28 - 50**
- Semi-fitted 3/4 sleeve blouse
- Front and back darts
- Side vents
- Shaped button-trim cuffs

### LADIES SIZING CHART:

SIZES:	28	30	32	34	36	38	40	42	44	46	48	50
HALF BUST (CM):	43	45.5	48	50.5	53	55.5	58	60.5	63	65.5	68	70.5



# K373 OXFORD SHIRT RANGE

Cotton Rich Oxford | 70% Cotton, 30% Polyester



MENS S/S IN K373 WHITE



MENS L/S IN K373 BLUE



LADIES S/S IN K373 WHITE



LADIES L/S IN K373 BLUE

## MENS SHIRTS

### S/S: SD1-OXF

- SIZES S - 5XL
- Regular fit short sleeve shirt
- Classic button-down collar with box pleat
- Posted seams

### L/S: SD2-OXF

- SIZES S - 5XL
- Regular fit long sleeve shirt
- Classic button-down collar with box pleat
- Posted seams

### MENS SIZING CHART:

SIZES:	S	M	L	XL	2XL	3XL	4XL	5XL
HALF CHEST (CM):	54	58	62	66	70	74	78	82

## LADIES BLOUSES

### AMBER S/S : BAM-OXF

- SIZES 28 - 50
- Semi-fitted short sleeve blouse
- Front and back darts
- Side vents
- Turn-back cuffs

### CHANEL L/S: BCH-OXF

- SIZES 28 - 50
- Semi-fitted long sleeve blouse
- Front and back darts
- Side vents
- Three-button cuffs

### LADIES SIZING CHART:

SIZES:	28	30	32	34	36	38	40	42	44	46	48	50
HALF BUST (CM):	43	45.5	48	50.5	53	55.5	58	60.5	63	65.5	68	70.5



# K373 TATE SHIRT RANGE

Cotton Rich Oxford | 70% Cotton, 30% Polyester



MENS S/S IN K373 GREY

MENS L/S IN K373 AIRFORCE

LADIES S/S IN K373 BLACK

LADIES L/S IN K373 NAVY

## MENS SHIRTS

### S/S: SB1-TAT

- SIZES S - 5XL
- Regular fit short sleeve shirt
- Narrow fashionable cutaway collar
- Smaller chest pocket
- Back box pleat for extra comfort
- Posted seams

### L/S: SB2-TAT

- SIZES S - 5XL
- Regular fit long sleeve shirt
- Narrow fashionable cutaway collar
- Smaller chest pocket
- Back box pleat for extra comfort
- Posted seams

### MENS SIZING CHART:

SIZES:	S	M	L	XL	2XL	3XL	4XL	5XL
HALF CHEST (CM):	54	58	62	66	70	74	78	82

## LADIES BLOUSES

### CARYS S/S: BCA-TAT

- SIZES 28 - 50
- Relaxed fit ladies short sleeve blouse without front and back darts for a casual look
- Narrow collar
- Side bust darts
- Side vents
- Turn back cuffs

### TATUM L/S: BTA-TAT

- SIZES 28 - 50
- Relaxed fit ladies long sleeve blouse without front and back darts for a casual look
- Narrow collar
- Side bust darts
- Side vents
- Adjustable rounded button cuffs

### LADIES SIZING CHART:

SIZES:	28	30	32	34	36	38	40	42	44	46	48	50
HALF BUST (CM):	44.5	47	49.5	52	54.5	57	59.5	62	64.5	67	69.5	72



# B12 CLASSIC SHIRT RANGE

Easy Care Classic Fabric | 65% Polyester, 35% Cotton



MENS S/S IN B12 NAVY CHECK



MENS L/S IN B12 NAVY CHECK



LADIES 3/4 IN B12 NAVY CHECK

## MENS SHIRTS

### S/S: SB5-B12

- SIZES S - 5XL
- Regular fit short sleeve shirt
- Classic collar
- Back knife pleats for extra comfort

### L/S: SB6-B12

- SIZES S - 5XL
- Regular fit long sleeve shirt
- Classic collar
- Back knife pleats for extra comfort

### MENS SIZING CHART:

SIZES:	S	M	L	XL	2XL	3XL	4XL	5XL
HALF CHEST (CM):	54	58	62	66	70	74	78	82

## LADIES BLOUSES

### JANINE 3/4: BC9-B12

- SIZES 28 - 50
- Tailored 3/4 sleeve blouse with front darts
- Side vents
- Pocket flaps

### LADIES SIZING CHART:

SIZES:	28	30	32	34	36	38	40	42	44	46	48	50
HALF BUST (CM):	44	46.5	49	51.5	54	56.5	59	61.5	64	66.5	69	71.5



B12 NAVY CHECK



# CP1 CULLINAN SHIRT RANGE

Printed Polycotton | 65% Polyester, 35% Cotton



## MENS SHIRTS

L/S: SA8-CP1

• SIZES S - 5XL

- Fashion fit long sleeve shirt

- Cutaway collar with contrast piping
- Back knife pleats for extra comfort
- Posted seams

### MENS SIZING CHART:

SIZES:	S	M	L	XL	2XL	3XL	4XL	5XL
HALF CHEST (CM):	52	56	60	64	68	72	76	80

## LADIES BLOUSES

CULLINAN L/S: BC2-CP1

• SIZES 28 - 50

- Semi-fitted long sleeve blouse
- Front and back darts

- Concealed front placket
- Side vents
- Contrast piping in collar
- Three buttons on cuff

### LADIES SIZING CHART:

SIZES:	28	30	32	34	36	38	40	42	44	46	48	50
HALF BUST (CM):	43	45.5	48	50.5	53	55.5	58	60.5	63	65.5	68	70.5



# CP2 REGENT SHIRT RANGE

Printed Polycotton | 65% Polyester, 35% Cotton



MENS L/S IN CP2 ROYAL

LADIES L/S IN CP2 ROYAL

MENS L/S IN CP2 BLACK

LADIES L/S IN CP2 BLACK

## MENS SHIRTS

L/S: SA8-CP2

• SIZES S - 5XL

• Fashion fit long sleeve shirt

- Cutaway collar with contrast piping
- Back knife pleats for extra comfort
- Posted seams

MENS SIZING CHART:

SIZES:	S	M	L	XL	2XL	3XL	4XL	5XL
HALF CHEST (CM):	52	56	60	64	68	72	76	80

## LADIES BLOUSES

REGENT L/S: BR2-CP2

• SIZES 28 - 50

• Semi-fitted long sleeve blouse  
• Front and back darts

- Concealed front placket
- Side vents
- Contrast piping in collar
- Three buttons on cuff

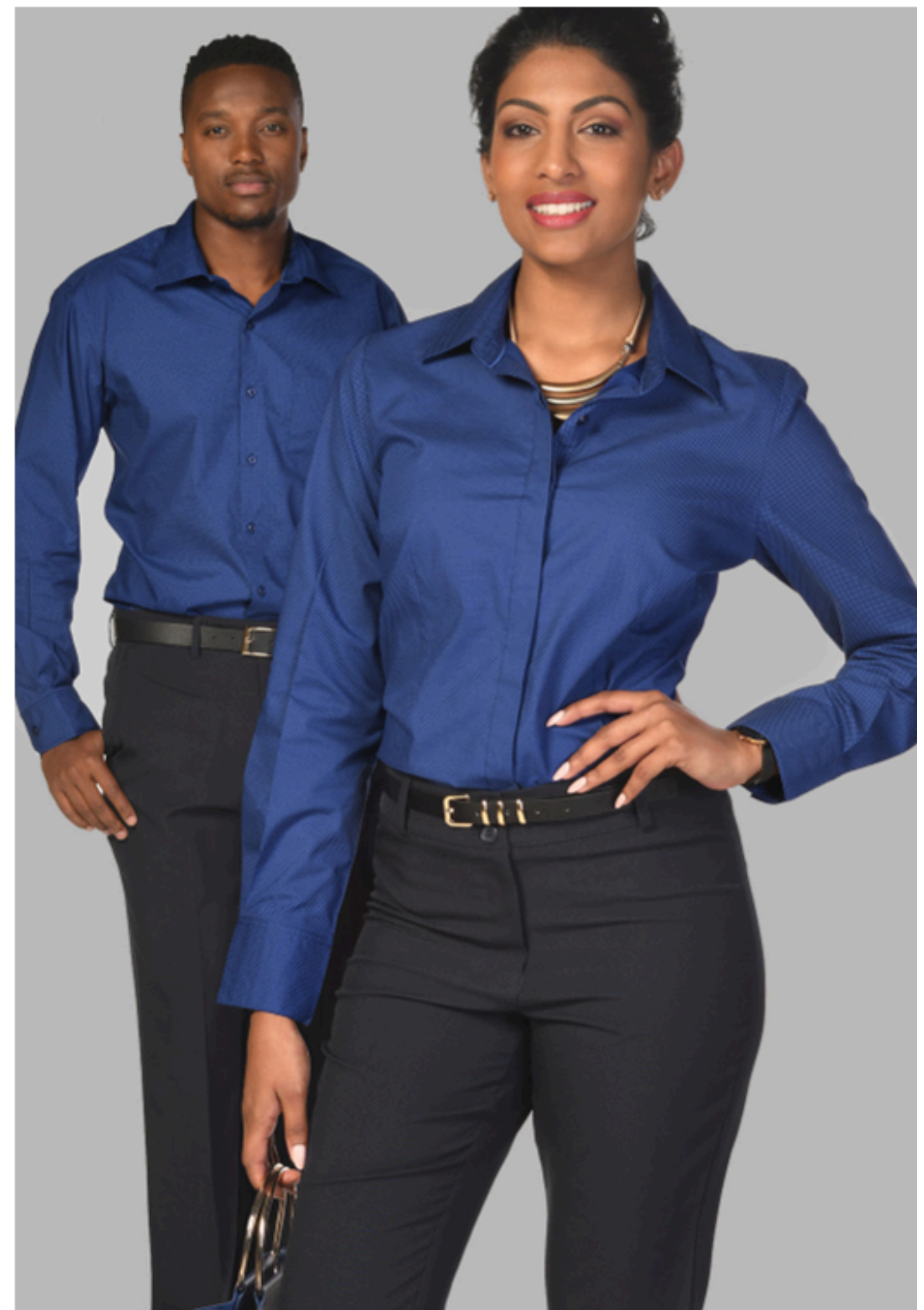
LADIES SIZING CHART:

SIZES:	28	30	32	34	36	38	40	42	44	46	48	50
HALF BUST (CM):	43	45.5	48	50.5	53	55.5	58	60.5	63	65.5	68	70.5



CP2 ROYAL

CP2 BLACK



# CP3 SELBY LONG SLEEVE SHIRTS

Printed Polycotton | 65% Polyester, 35% Cotton



## MENS SHIRTS

L/S: SA8-CP3

• SIZES S - 5XL

- Fashion fit long sleeve shirt with cut-away collar

- Contrast piping in collar
- Back knife pleats for extra comfort

MENS SIZING CHART:

SIZES:	S	M	L	XL	2XL	3XL	4XL	5XL
HALF CHEST (CM):	52	56	60	64	68	72	76	80

## LADIES BLOUSES

SELBY L/S: BS2-CP3

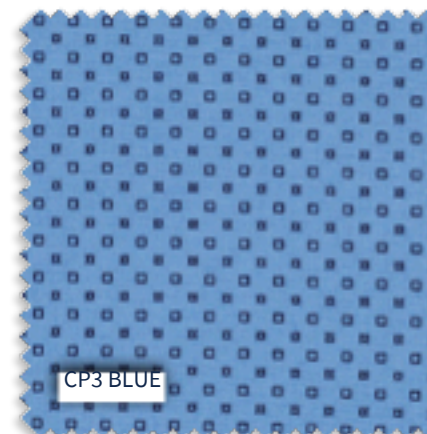
• SIZES 28 - 50

- Semi-fitted long sleeve blouse
- Front and back darts

- Concealed front placket
- Side vents
- Contrast piping in collar
- Three buttons on cuff

LADIES SIZING CHART:

SIZES:	28	30	32	34	36	38	40	42	44	46	48	50
HALF BUST (CM):	43	45.5	48	50.5	53	55.5	58	60.5	63	65.5	68	70.5



# P04 PERCALE CHECK SHIRT RANGE

Cotton Rich Percale | 55% Cotton, 45% Polyester



MENS S/S IN P04 AIRFORCE



MENS L/S IN P04 AIRFORCE



LADIES 3/4 IN P04 AIRFORCE

## MENS SHIRTS

### S/S: SD1-P04

• SIZES S - 5XL

- Regular fit short sleeve shirt
- Two-piece button-down collar
- Back knife pleats for extra comfort

### L/S: SD2-P04

• SIZES S - 5XL

- Regular fit long sleeve shirt
- Two-piece button-down collar
- Back knife pleats for extra comfort

### MENS SIZING CHART:

SIZES:	S	M	L	XL	2XL	3XL	4XL	5XL
HALF CHEST (CM):	54	58	62	66	70	74	78	82

## LADIES BLOUSES

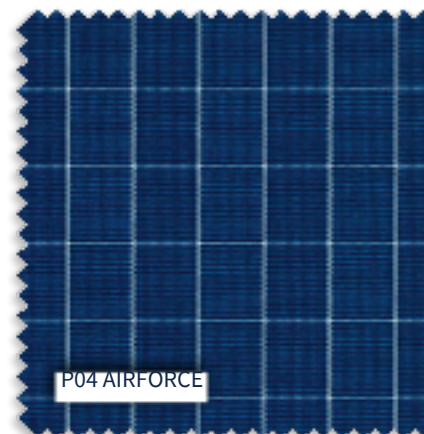
### CATHY 3/4: BC6-P04

• SIZES 28 - 50

- Semi-fitted fit 3/4 sleeve blouse
- Front darts
- Side vents

### LADIES SIZING CHART:

SIZES:	28	30	32	34	36	38	40	42	44	46	48	50
HALF BUST (CM):	44	46.5	49	51.5	54	56.5	59	61.5	64	66.5	69	71.5



P04 AIRFORCE



# P070 EASY CARE POPLIN RANGE

Easy Care Poplin | 65% Polyester, 35% Cotton



## MENS SHIRTS

**S/S: SB5-070**

- **SIZES S – 5XL**
- Regular fit short sleeve shirt
- Two-piece cut-away collar
- Back knife pleats for extra comfort

**L/S: SB6-070**

- **SIZES S – 5XL**
- Regular fit long sleeve shirt
- Two-piece cut-away collar
- Back knife pleats for extra comfort

### MENS SIZING CHART:

SIZES:	S	M	L	XL	2XL	3XL	4XL	5XL
HALF CHEST (CM):	54	58	62	66	70	74	78	82

## LADIES BLOUSES

**CATHY S/S: BC1-070**

- **SIZES 28 – 50**
- Semi-fitted fit short sleeve blouse
- Front darts
- Side vents

**CATHY 3/4: BC6-070**

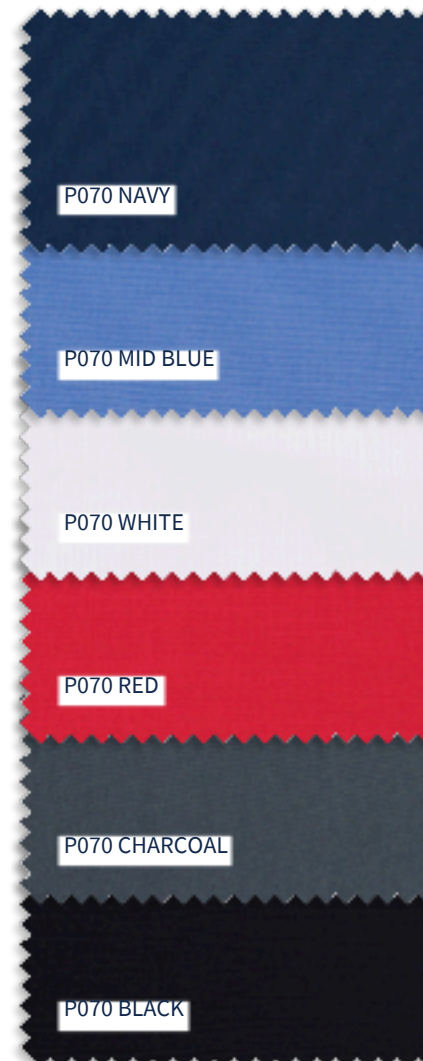
- **SIZES 28 – 50**
- Semi-fitted fit 3/4 sleeve blouse
- Front darts
- Side vents

**CATHY L/S: BC2-070**

- **SIZES 28 – 50**
- Semi-fitted fit long sleeve blouse with button cuffs
- Front darts
- Side vents

### LADIES SIZING CHART:

SIZES:	28	30	32	34	36	38	40	42	44	46	48	50
HALF BUST (CM):	44	46.5	49	51.5	54	56.5	59	61.5	64	66.5	69	71.5



# N04 STRIPE SHIRT RANGE

Cotton Rich Yarn Dyed Stripe | 75% Cotton, 25% Polyester



MENS S/S IN N04 FRENCH BLUE



MENS L/S IN N04 FRENCH BLUE



LADIES 3/4 IN N04 FRENCH BLUE

## MENS SHIRTS

### S/S: SD1-N04

- SIZES S - 5XL
- Regular fit short sleeve shirt
- Two-piece button-down collar
- Back knife pleats for extra comfort

### L/S: SD2-N04

- SIZES S - 5XL
- Regular fit short sleeve shirt
- Two-piece button-down collar
- Back knife pleats for extra comfort

### MENS SIZING CHART:

SIZES:	S	M	L	XL	2XL	3XL	4XL	5XL
HALF CHEST (CM):	54	58	62	66	70	74	78	82

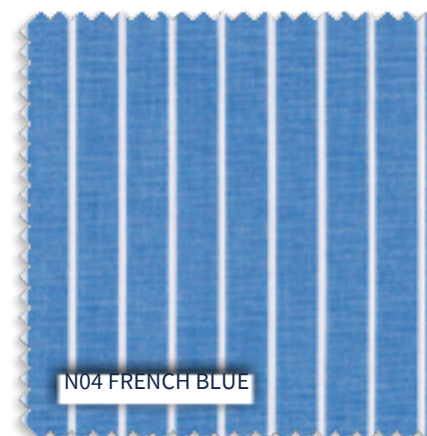
## LADIES BLOUSES

### WENDY 3/4: BQ6-N04

- SIZES 28 - 50
- Semi-fitted 3/4 sleeve blouse
- Front and back darts
- Side vents

### LADIES SIZING CHART:

SIZES:	28	30	32	34	36	38	40	42	44	46	48	50
HALF BUST (CM):	44.5	47	49.5	52	54.5	57	59.5	62	64.5	67.5	70.5	73.5



N04 FRENCH BLUE



# N20 STRIPE SHIRT RANGE

Cotton Rich Fibre Dyed Stripe | 60% Cotton, 40% Polyester



MENS L/S IN N20 CHARCOAL



LADIES S/S IN N20 CHARCOAL

## MENS SHIRTS

L/S: SA6-N20

• SIZES S - 5XL

- Regular fit long sleeve shirt
- Two-piece cutaway collar
- Back knife pleats for extra comfort
- Contrast trim on collar stand, button stand and inner cuff

• While stocks last

MENS SIZING CHART:

SIZES:	S	M	L	XL	2XL	3XL	4XL	5XL
HALF CHEST (CM):	54	58	62	66	70	74	78	82

## LADIES BLOUSES

ANGELIQUE S/S: BAT-N20

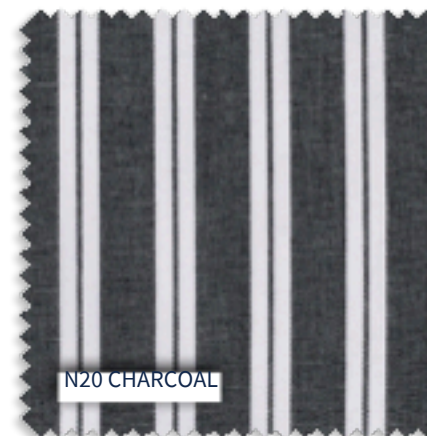
• SIZES 28 - 50

- Semi-fitted short sleeve blouse
- Front and back darts
- Side vents
- Contrast detail on collar stand, button stand and tab on cuff

• While stocks last

LADIES SIZING CHART:

SIZES:	28	30	32	34	36	38	40	42	44	46	48	50
HALF BUST (CM):	44.5	47	49.5	52	54.5	57	59.5	62	64.5	67.5	70.5	73.5



N20 CHARCOAL



# S05 END ON END SHIRT RANGE

Cotton Rich Yarn Dyed End on End | 55% Cotton, 45% Polyester



MENS S/S IN S05 SKY



MENS L/S IN S05 SKY



LADIES 3/4 IN S05 SKY

## MENS SHIRTS

### S/S: SD1-S05

- SIZES S - 5XL
- Regular fit short sleeve shirt
- Two-piece button-down collar
- Back knife pleats for extra comfort

### L/S: SD2-S05

- SIZES S - 5XL
- Regular fit long sleeve shirt
- Two-piece button-down collar
- Back knife pleats for extra comfort

### MENS SIZING CHART:

SIZES:	S	M	L	XL	2XL	3XL	4XL	5XL
HALF CHEST (CM):	54	58	62	66	70	74	78	82

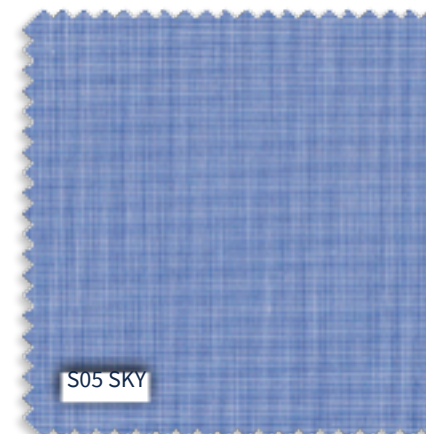
## LADIES BLOUSES

### MEGAN S/S: BW1-S05

- SIZES S - 5XL
- Regular fit short sleeve blouse
- Front and back darts
- Side vents

### LADIES SIZING CHART:

SIZES:	S	M	L	XL	2XL	3XL	4XL	5XL
HALF BUST (CM):	46.5	51.5	56.5	61.5	66.5	71.5	76.5	81.5



# K225 VICTORIA CAP SLEEVE BLOUSE

Easy Care Koshiho Fabric | 100% Polyester



VICTORIA S/S IN SCARLET



VICTORIA S/S IN BLACK



VICTORIA S/S IN PEARL

## LADIES BLOUSES

VICTORIA S/S: BV1-225

• SIZES 28 - 50

• V-neck front with mock front opening

• Frilled cap sleeve with gauged sleeve head

• Narrow front yoke with gauging

VICTORIA SIZING CHART:

SIZES:	28	30	32	34	36	38	40	42	44	46	48	50
HALF BUST (CM):	41	43.5	46	48.5	51	53.5	56	58.5	61	63.5	66	68.5



# K225 CAREY 3/4-SLEEVE BLOUSE

Easy Care Koshiho Fabric | 100% Polyester



CAREY 3/4 IN FRENCH NAVY

CAREY 3/4 IN WHITE

CAREY 3/4 IN BLACK

## LADIES BLOUSES

CAREY 3/4: BC3-225

• SIZES 28 - 50

• Ladies 3/4 sleeve blouse

• Relaxed fit, can be worn tucked in or untucked for a casual look

• Mandarin collarless neckline

• Wide finished hem with side slit detail

• Back knife pleats and bust darts for comfort

• Wide bracelet length sleeve with a gauged cuff

CAREY SIZING CHART:

SIZES:	28	30	32	34	36	38	40	42	44	46	48	50
HALF BUST (CM):	44.5	47	49.5	52	54.5	57	59.5	62	64.5	67	69.5	72



# K225 KAYLEE SLEEVELESS BLOUSE

Easy Care Koshiho Fabric | 100% Polyester



KAYLEE S/LESS  
IN PEBBLE GREY



KAYLEE S/LESS  
IN FRENCH NAVY



KAYLEE S/LESS  
IN PEARL



KAYLEE S/LESS  
IN BLACK

## LADIES BLOUSES

KAYLEE S/LESS: BK4-225

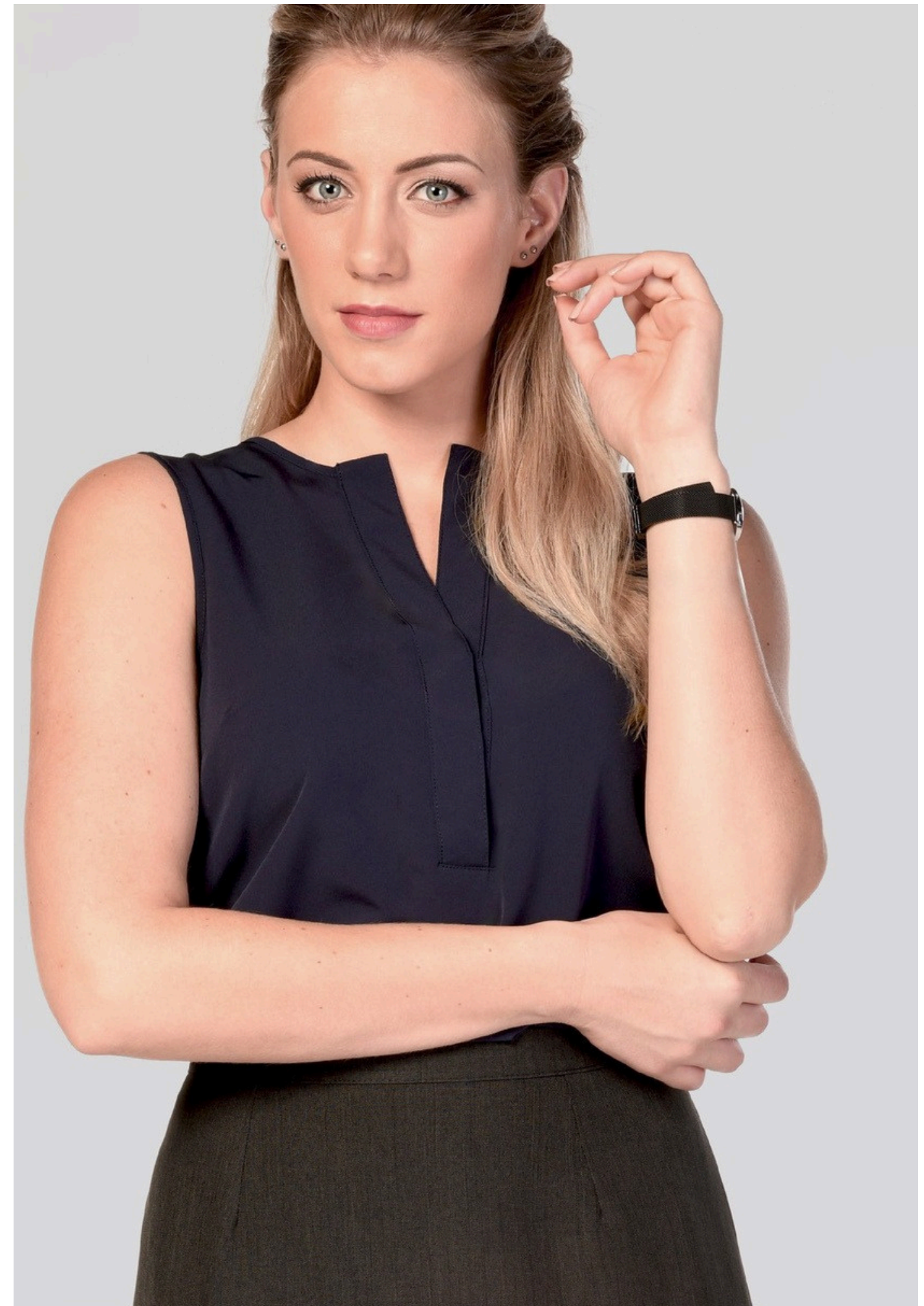
• SIZES 28 - 50

- Ladies sleeveless blouse
- V-neck with a concealed button placket

- Shaped hem, with side slits
- Back box pleat and bust darts for comfort

KAYLEE SIZING CHART:

SIZES:	28	30	32	34	36	38	40	42	44	46	48	50
HALF BUST (CM):	42.5	45	47.5	50	52.5	55	57.5	60	62.5	65	67.5	70



# K225 ZOE SHORT SLEEVE BLOUSE

Easy Care Koshiho Fabric | 100% Polyester



ZOE S/S IN SCARLET



ZOE S/S IN PEBBLE GREY



ZOE S/S IN SAPPHIRE



ZOE S/S IN FRENCH NAVY



ZOE S/S IN CORNFLOWER BLUE



ZOE S/S IN WHITE



ZOE S/S IN BLACK



ZOE S/S IN PEARL

## LADIES BLOUSES

ZOE S/S: BZ1-225

• SIZES 28 – 50

- Ladies short sleeve blouse
- Classic fit with regular collar and front panel lines
- Notch detail on cuffs

ZOE SIZING CHART:

SIZES:	28	30	32	34	36	38	40	42	44	46	48	50
HALF BUST (CM):	43.5	46	48.5	51	53.5	56	58.5	61	63.5	66	68.5	71



# K225 FAITH 3/4-SLEEVE BLOUSE

Easy Care Koshiho Fabric | 100% Polyester



FAITH 3/4 IN SCARLET



FAITH 3/4 IN PEBBLE GREY



FAITH 3/4 IN SAPPHIRE



FAITH 3/4 IN FRENCH NAVY



FAITH 3/4 IN CORNFLOWER BLUE



FAITH 3/4 IN WHITE



FAITH 3/4 IN BLACK



FAITH 3/4 IN PEARL

3/4 sleeves are great for transitional seasons, and Faith matches the Zoe and Georgia styles for a complimentary look.

## LADIES BLOUSES

FAITH 3/4 : BF3-225

• SIZES 28 - 50

- Ladies 3/4 sleeve blouse
- Regular collar
- Classic fit, with panel lines
- Sleeves have narrow button cuffs

FAITH SIZING CHART:

<b>SIZES:</b>	28	30	32	34	36	38	40	42	44	46	48	50
<b>HALF BUST (CM):</b>	43.5	46	48.5	51	53.5	56	58.5	61	63.5	66	68.5	71



# K225 GEORGIA LONG SLEEVE BLOUSE

Easy Care Koshibo Fabric | 100% Polyester



GEORGIA L/S IN SCARLET



GEORGIA L/S IN PEARL



GEORGIA L/S IN SAPPHIRE



GEORGIA L/S IN WHITE



GEORGIA L/S  
IN FRENCH NAVY



GEORGIA L/S  
IN PEBBLE GREY



GEORGIA L/S  
IN CORNFLOWER BLUE

Georgia is your go-to long sleeve blouse for the cooler weather, and wears as easily as Zoe and Faith in the complementary colours.

## LADIES BLOUSES

GEORGIA L/S: BG2-225

• SIZES 28 - 50

- Ladies long sleeve blouse
- Classic fit with narrow collar
- Back box pleat and bust darts for comfort
- Narrow button cuffs

GEORGIA SIZING CHART:

<b>SIZES:</b>	28	30	32	34	36	38	40	42	44	46	48	50
<b>HALF BUST (CM):</b>	45	47.5	50	52.5	55	57.5	60	62.5	65	67.5	70	72.5



# K222 POLKA DOT PRINTED BLOUSES

Easy Care Printed Koshiho Fabric | 100% Polyester



ZOE S/S IN K222 NAVY



ZOE S/S IN K222 RED



ZOE S/S IN K222 BLACK



MILLA L/S IN K222 NAVY



MILLA L/S IN K222 RED



MILLA L/S IN K222 BLACK

## LADIES BLOUSES

### ZOE S/S: BZ1-222

• **SIZES 28 – 50**

- Ladies polka-dot printed short sleeve blouse
- Classic fit with regular collar and front panel lines
- Notch detail on cuffs

### ZOE SIZING CHART:

<b>SIZES:</b>	28	30	32	34	36	38	40	42	44	46	48	50
<b>HALF BUST (CM):</b>	43.5	46	48.5	51	53.5	56	58.5	61	63.5	66	68.5	71

### MILLA L/S: BM2-222

• **SIZES 28 – 50**

- Ladies polka-dot printed long sleeve blouse
- Fashionable mandarin collar in a relaxed fit

- Back yoke with gauging for comfort
- Adjustable tab sleeves can be worn up or down
- Longer length back
- Can be worn tucked in or out

### MILLA SIZING CHART:

<b>SIZES:</b>	28	30	32	34	36	38	40	42	44	46	48	50
<b>HALF BUST (CM):</b>	45	47.5	50	52.5	55	57.5	60	62.5	65	67.5	70	72.5



# K221 MINIMAL TULIP PRINTED BLOUSES

Easy Care Printed Koshiho Fabric | 100% Polyester



## LADIES BLOUSES

### ZOE S/S: BZ1-221

- SIZES 28 - 50
- Ladies tulip print short sleeve blouse
- Classic fit with regular collar and front panel lines
- Notch detail on cuffs



ZOE S/S IN K221 NAVY



MILLA L/S IN K221 NAVY

### ZOE SIZING CHART:

<b>SIZES:</b>	28	30	32	34	36	38	40	42	44	46	48	50
<b>HALF BUST (CM):</b>	43.5	46	48.5	51	53.5	56	58.5	61	63.5	66	68.5	71

### MILLA L/S: BM2-221

- SIZES 28 - 50
- Ladies tulip print long sleeve blouse
- Fashionable mandarin collar in a relaxed fit
- Back yoke with gauging for comfort
- Adjustable tab sleeves can be worn up or down
- Longer length back
- Can be worn tucked in or out

### MILLA SIZING CHART:

<b>SIZES:</b>	28	30	32	34	36	38	40	42	44	46	48	50
<b>HALF BUST (CM):</b>	45	47.5	50	52.5	55	57.5	60	62.5	65	67.5	70	72.5



# K228 POLKA DOT PRINTED BLOUSES

Easy Care Printed Koshibo Fabric | 100% Polyester



KAYLEE S/LESS IN K228



SIENNA 3/4 IN K228



GEORGIA L/S IN K228

## LADIES BLOUSES

### KAYLEE S/LESS: BK4-228

• SIZES 28 - 50

- Ladies sleeveless blouse

- V-neck with a concealed button placket
- Shaped hem, with side slits
- Back box pleat and bust darts for comfort

#### KAYLEE SIZING CHART:

<b>SIZES:</b>	28	30	32	34	36	38	40	42	44	46	48	50
<b>HALF BUST (CM):</b>	42.5	45	47.5	50	52.5	55	57.5	60	62.5	65	67.5	70

### SIENNA 3/4 : BS3-228

• SIZES 28 - 50

- Cropped length style with V-neckline

- Fluted, slit sleeves, add a modern fun look to your workwear wardrobe
- Side slits for comfort

#### SIENNA SIZING CHART:

<b>SIZES:</b>	28	30	32	34	36	38	40	42	44	46	48	50
<b>HALF BUST (CM):</b>	43.5	46	48.5	51	53.5	56	58.5	61	63.5	66	68.5	71

### GEORGIA L/S: BG2-228

• SIZES 28 - 50

- Ladies long sleeve blouse

- Classic fit with narrow collar
- Back box pleat and bust darts for comfort
- Narrow button cuffs

#### GEORGIA SIZING CHART:

<b>SIZES:</b>	28	30	32	34	36	38	40	42	44	46	48	50
<b>HALF BUST (CM):</b>	45	47.5	50	52.5	55	57.5	60	62.5	65	67.5	70	72.5



# K231 VENICE PRINTED BLOUSES

Printed Georgette Fabric | 100% Polyester



ROMY S/LESS IN K231 NAVY



GRACE S/S IN K231 NAVY



ARIA L/S IN K231 NAVY

## LADIES BLOUSES

### ROMY S/LESS: BRO-VEN

- **SIZES 28 - 50**
- Button through blouse with a narrow collar
- Shaped hem with side slits
- Back box pleat and bust darts for comfort

#### ROMY SIZING CHART:

<b>SIZES:</b>	28	30	32	34	36	38	40	42	44	46	48	50
<b>HALF BUST (CM):</b>	45	47.5	50	52.5	55	57.5	60	62.5	65	67.5	70	72.5

### GRACE S/S: BGR-VEN

- **SIZES 28 - 50**
- Fashionable short flutter sleeves
- Centre front pleat detail with front keyhole and button opening
- Shaped hem with side slits

#### GRACE SIZING CHART:

<b>SIZES:</b>	28	30	32	34	36	38	40	42	44	46	48	50
<b>HALF BUST (CM):</b>	45	47.5	50	52.5	55	57.5	60	62.5	65	67.5	70	72.5

### ARIA L/S: BAR-VEN

- **SIZES 28 - 50**
- Long sleeve blouse with mandarin collar and V-neck placket opening
- Narrow sleeve cuffs, with shell buttons
- Pleat detail on back neck, shaped hem and side slits for comfort

#### ARIA SIZING CHART:

<b>SIZES:</b>	28	30	32	34	36	38	40	42	44	46	48	50
<b>HALF BUST (CM):</b>	42.5	45	47.5	50	52.5	55	57.5	60	62.5	65	67.5	70



# K229 FLEUR PRINTED BLOUSES

Printed Georgette Fabric | 100% Polyester



GRACE S/S IN K229 GREY

ARIA L/S IN K229 GREY

GRACE S/S IN K229 BLACK

ARIA L/S IN K229 BLACK

## LADIES BLOUSES

### GRACE S/S: BGR-FLE

• **SIZES 28 - 50**

- Fashionable short flutter sleeves
- Centre front pleat detail with front keyhole and button opening
- Shaped hem with side slits

#### GRACE SIZING CHART:

<b>SIZES:</b>	28	30	32	34	36	38	40	42	44	46	48	50
<b>HALF BUST (CM):</b>	45	47.5	50	52.5	55	57.5	60	62.5	65	67.5	70	72.5

### ARIA L/S: BAR-FLE

• **SIZES 28 - 50**

- Long sleeve blouse with mandarin collar and V-neck placket opening
- Narrow sleeve cuffs, with shell buttons
- Pleat detail on back neck, shaped hem and side slits for comfort

#### ARIA SIZING CHART:

<b>SIZES:</b>	28	30	32	34	36	38	40	42	44	46	48	50
<b>HALF BUST (CM):</b>	42.5	45	47.5	50	52.5	55	57.5	60	62.5	65	67.5	70



# K230 WILLOW PRINTED BLOUSES

Printed Georgette Fabric | 100% Polyester



## LADIES BLOUSES

GRACE S/S: BGR-WIL

**SIZES 28 - 50**

- Fashionable short flutter sleeves
- Centre front pleat detail with front keyhole and button opening
- Shaped hem with side slits



GRACE S/S IN K230 BLACK



ARIA L/S IN K230 BLACK

GRACE SIZING CHART:

<b>SIZES:</b>	28	30	32	34	36	38	40	42	44	46	48	50
<b>HALF BUST (CM):</b>	45	47.5	50	52.5	55	57.5	60	62.5	65	67.5	70	72.5

ARIA L/S: BAR-WIL

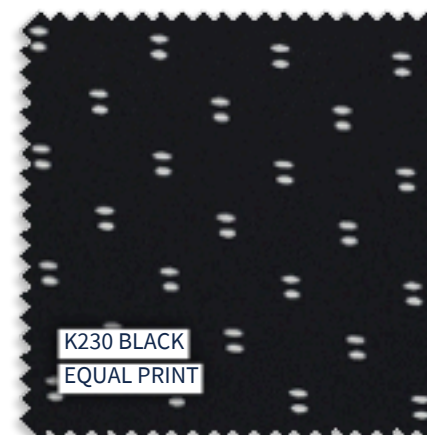
**SIZES 28 - 50**

- Long sleeve blouse with mandarin collar and V-neck placket opening

- Narrow sleeve cuffs, with shell buttons
- Pleat detail on back neck, shaped hem and side slits for comfort

ARIA SIZING CHART:

<b>SIZES:</b>	28	30	32	34	36	38	40	42	44	46	48	50
<b>HALF BUST (CM):</b>	42.5	45	47.5	50	52.5	55	57.5	60	62.5	65	67.5	70



K230 BLACK  
EQUAL PRINT



# K266 JOLIE PRINTED BLOUSES

Printed Georgette Fabric | 100% Polyester



## LADIES BLOUSES

### EDIE S/S: BED-JOL

• SIZES 28 - 50

- Flattering V-neck ladies short sleeve blouse
- Fashionable short flutter sleeves
- Side slits for comfort



EDIE S/S IN K266 BLACK



LILY L/S IN K266 BLACK

### EDIE SIZING CHART:

<b>SIZES:</b>	28	30	32	34	36	38	40	42	44	46	48	50
<b>HALF BUST (CM):</b>	45	47.5	50	52.5	55	57.5	60	62.5	65	67.5	70	72.5

### LILY L/S: BLI-JOL

• SIZES 28 - 50

- Feminine round neck long sleeve blouse
- Flattering silhouette

- Gauging detail on cuff and sleeve head
- Wide cuffs with shank button fastening
- Back keyhole with button
- Shaped hem

### LILY SIZING CHART:

<b>SIZES:</b>	28	30	32	34	36	38	40	42	44	46	48	50
<b>HALF BUST (CM):</b>	43.5	46	48.5	51	53.5	56	58.5	61	63.5	66	68.5	71



# K265 FLORENCE PRINTED BLOUSES

Printed Georgette Fabric | 100% Polyester



## LADIES BLOUSES

### EDIE S/S: BED-FLO

• SIZES 28 - 50

- Flattering V-neck ladies short sleeve blouse
- Fashionable short flutter sleeves
- Side slits for comfort



EDIE S/S IN K265 NAVY/BLUE



LILY L/S IN K265 NAVY/BLUE

### EDIE SIZING CHART:

<b>SIZES:</b>	28	30	32	34	36	38	40	42	44	46	48	50
<b>HALF BUST (CM):</b>	45	47.5	50	52.5	55	57.5	60	62.5	65	67.5	70	72.5

### LILY L/S: BLI-FLO

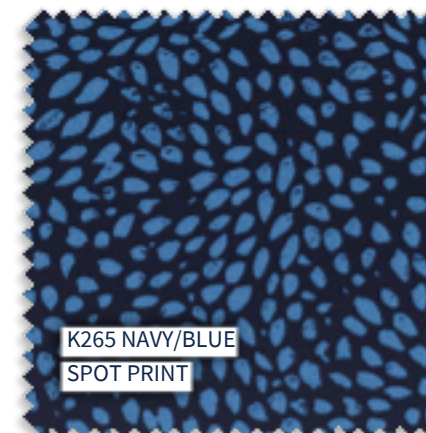
• SIZES 28 - 50

- Feminine round neck long sleeve blouse
- Flattering silhouette

- Gauging detail on cuff and sleeve head
- Wide cuffs with shank button fastening
- Back keyhole with button
- Shaped hem

### LILY SIZING CHART:

<b>SIZES:</b>	28	30	32	34	36	38	40	42	44	46	48	50
<b>HALF BUST (CM):</b>	43.5	46	48.5	51	53.5	56	58.5	61	63.5	66	68.5	71



K265 NAVY/BLUE  
SPOT PRINT



# K264 PARIS PRINTED BLOUSES

Printed Georgette Fabric | 100% Polyester



EDIE S/S IN K264 GREY



LILY L/S IN K264 GREY



EDIE S/S IN K264 PLUM



LILY L/S IN K264 PLUM

## LADIES BLOUSES

### EDIE S/S: BED-PAR

• SIZES 28 - 50

- Flattering V-neck ladies short sleeve blouse
- Fashionable short flutter sleeves
- Side slits for comfort

### EDIE SIZING CHART:

<b>SIZES:</b>	28	30	32	34	36	38	40	42	44	46	48	50
<b>HALF BUST (CM):</b>	45	47.5	50	52.5	55	57.5	60	62.5	65	67.5	70	72.5

### LILY L/S: BLI-PAR

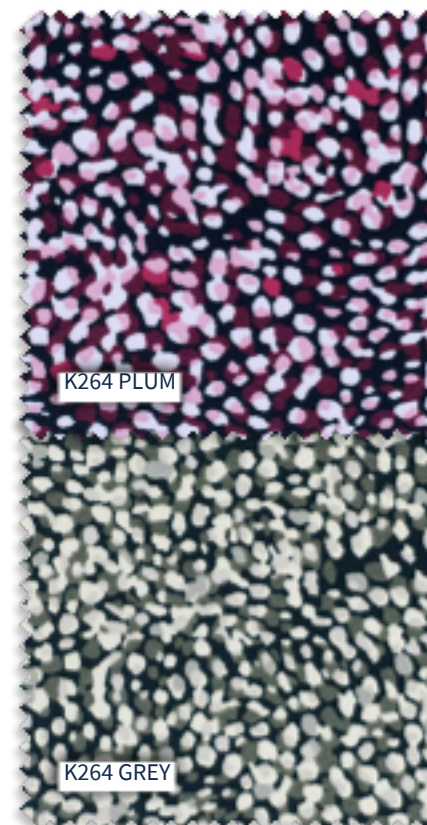
• SIZES 28 - 50

- Feminine round neck long sleeve blouse
- Flattering silhouette

- Gauging detail on cuff and sleeve head
- Wide cuffs with shank button fastening
- Back keyhole with button
- Shaped hem

### LILY SIZING CHART:

<b>SIZES:</b>	28	30	32	34	36	38	40	42	44	46	48	50
<b>HALF BUST (CM):</b>	43.5	46	48.5	51	53.5	56	58.5	61	63.5	66	68.5	71



K264 PLUM

K264 GREY



# K261 EMILY SHORT SLEEVE BLOUSE

Plain Georgette Fabric | 100% Polyester



EMILY S/S IN K261 TEAL



EMILY S/S IN K261 BURGUNDY



EMILY S/S IN K261 NAVY



EMILY S/S IN K261 BLACK

## LADIES BLOUSES

EMILY S/S: BE1-EMI

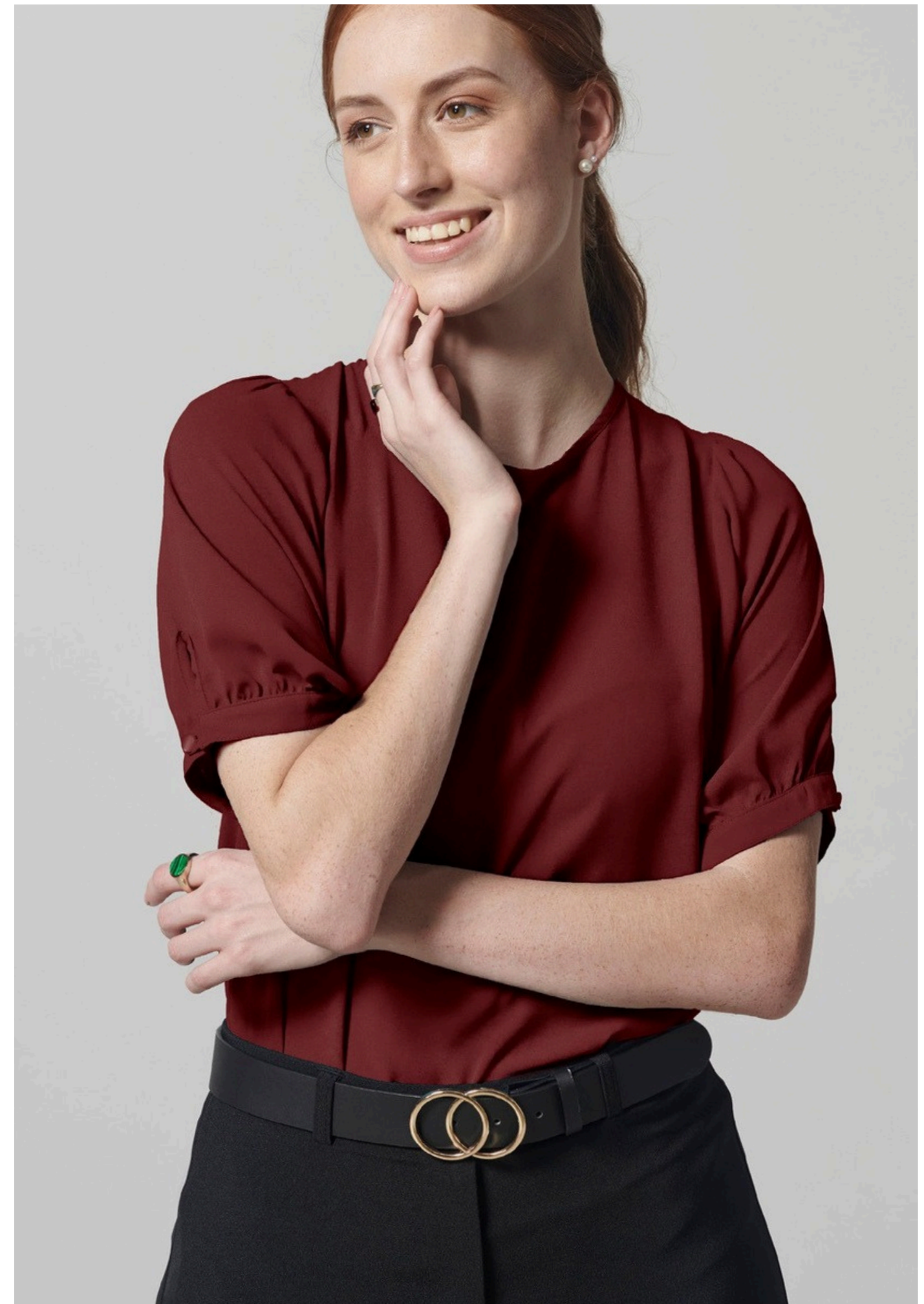
• SIZES 28 - 50

- Short puff sleeve ladies blouse
- Banded cuffs with a button and loop closure

- Round neck with back keyhole and button closure
- Side bust darts for comfort
- Relaxed fit

EMILY SIZING CHART:

SIZES:	28	30	32	34	36	38	40	42	44	46	48	50
HALF BUST (CM):	40.5	43	45.5	48	50.5	53	55.5	58	60.5	63	65.5	68



# K261 MORGAN LONG SLEEVE BLOUSE

Plain Georgette Fabric | 100% Polyester



MORGAN L/S IN K261 TEAL



MORGAN L/S IN K261 BURGUNDY



MORGAN L/S IN K261 NAVY



MORGAN L/S IN K261 BLACK

## LADIES BLOUSES

MORGAN L/S: BM2-MOR

• SIZES 28 - 50

- V-neckline ladies long-sleeve blouse
- Flattering silhouette with a shaped hem

- Gauging on shoulders, cuff and back yoke for a soft feminine touch
- Wide cuffs with loop and shank button

MORGAN SIZING CHART:

SIZES:	28	30	32	34	36	38	40	42	44	46	48	50
HALF BUST (CM):	46.5	49	51.5	54	56.5	59	61.5	64	66.5	69	71.5	74



# K232 RUBY CAP SLEEVE BLOUSE

Bon-Bon Stretch Knit | 94% Polyester, 6% Spandex



RUBY S/S IN K232 RED



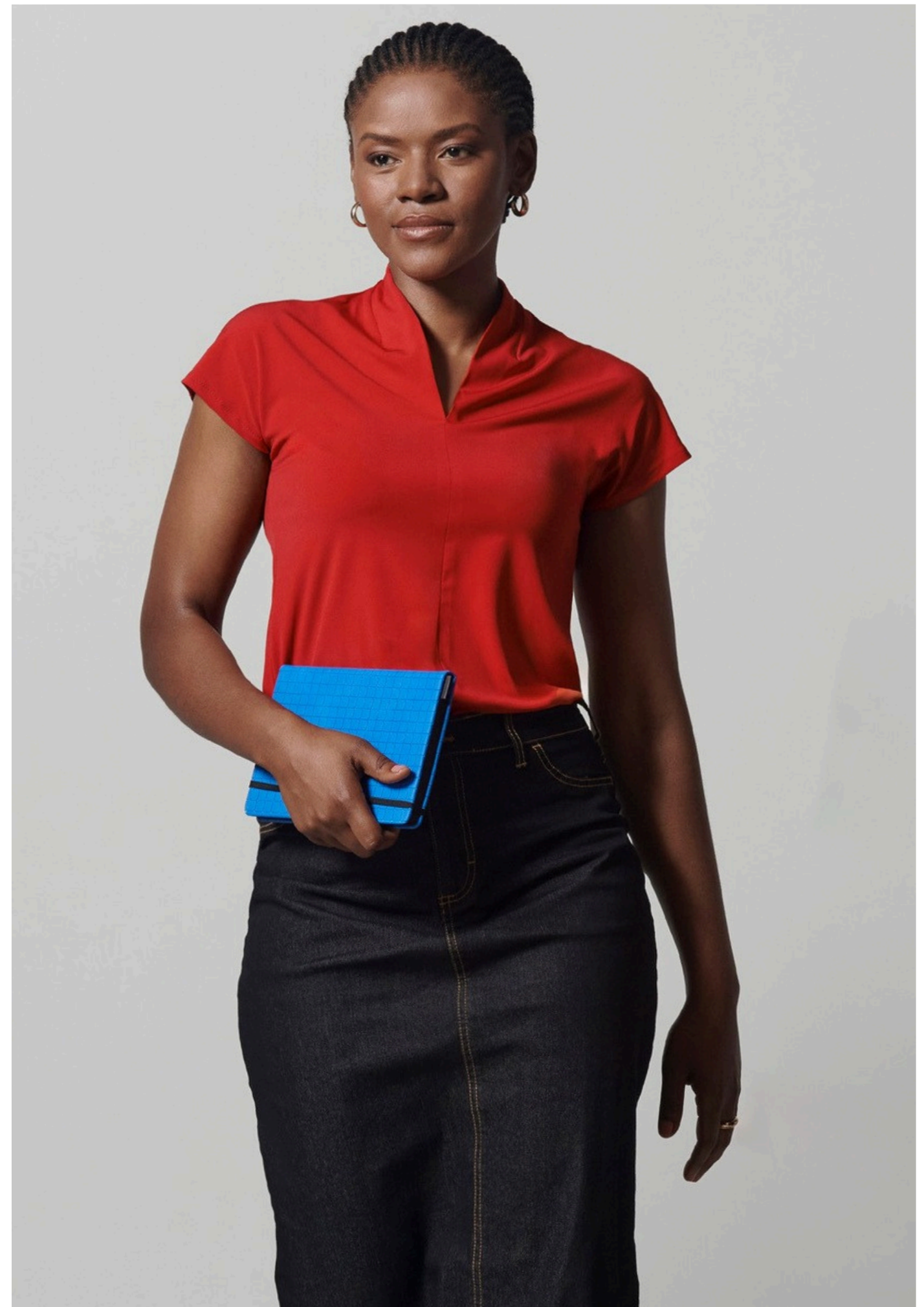
RUBY S/S IN K232 NAVY



RUBY S/S IN K232 ROYAL



RUBY S/S IN K232 BLACK



## LADIES BLOUSES

RUBY S/S: BRU-232

• SIZES XS - 5XL

- Short cap sleeve ladies blouse
- Relaxed fit and easy to wear

- Classic V-neck grown-on collar with back ruching

RUBY SIZING CHART:

SIZES:	X	S	M	L	XL	2XL	3XL	4XL	5XL
HALF BUST (CM):	S	43	47	51	55	59	63	67	71

# K232 LEAH PUFF SLEEVE BLOUSE

Bon-Bon Stretch Knit | 94% Polyester, 6% Spandex



LEAH S/S IN K232 RED



LEAH S/S IN K232 NAVY



LEAH S/S IN K232 ROYAL



LEAH S/S IN K232 BLACK

## LADIES BLOUSES

LEAH S/S: BLE-232

• SIZES XS - 5XL

- Scooped boat neck ladies blouse
- Comfy and easy to throw on

- Elbow length sleeves
- Banded cuffs with pleating for a puff-sleeve look

LEAH SIZING CHART:

SIZES:	XS	S	M	L	XL	2XL	3XL	4XL	5XL
HALF BUST (CM):	41.5	45.5	49.5	53.5	57.5	61.5	65.5	69.5	73.5



# K232 INES SHORT SLEEVE BLOUSE

Bon-Bon Stretch Knit | 94% Polyester, 6% Spandex



INES S/S IN K232 RED



INES S/S IN K232 NAVY



INES S/S IN K232 ROYAL



INES S/S IN K232 BLACK



## LADIES BLOUSES

INES S/S: BIN-232

• SIZES XS - 5XL

• Short sleeve ladies blouse

- Boat neck
- Side knot tie detail for effortless style

INES SIZING CHART:

SIZES:	X	S	M	L	XL	2XL	3XL	4XL	5XL
HALF BUST (CM):	S	56	60	64	68	72	76	80	84



## BRANDING OPTIONS:

The following branding options  
are available on quotation

basis:

- Embroidery
- HTV vinyl
- Sublimation
- Laser Engraving

Contact us now for a quotation

[heili@rifleprinting.co.za](mailto:heili@rifleprinting.co.za)

[james@rifleprinting.co.za](mailto:james@rifleprinting.co.za)

[www.rifleprinting.co.za](http://www.rifleprinting.co.za)