



DISPLAY



FLOOR VINYL'S • BANNERS • BANNERWALLS • TABLE CLOTHS • FLAGS • FLAG FOUNTAINS
POP-UP BANNERS • A-FRAME BANNERS • FLYING BANNERS • PARASOLS • GAZEBOS

FLOOR VINYL

Let your brand lead the way!

Our Floor Vinyls are manufactured from high quality, anti-slip floor lamination to ensure safety for foot traffic. Vinyls are easy to apply, tough and durable, ensuring longevity of use.

This range is ideal for directional signage in large venues, retail centres, office blocks, schools and hospitals.



SQUARE FLOOR VINYL

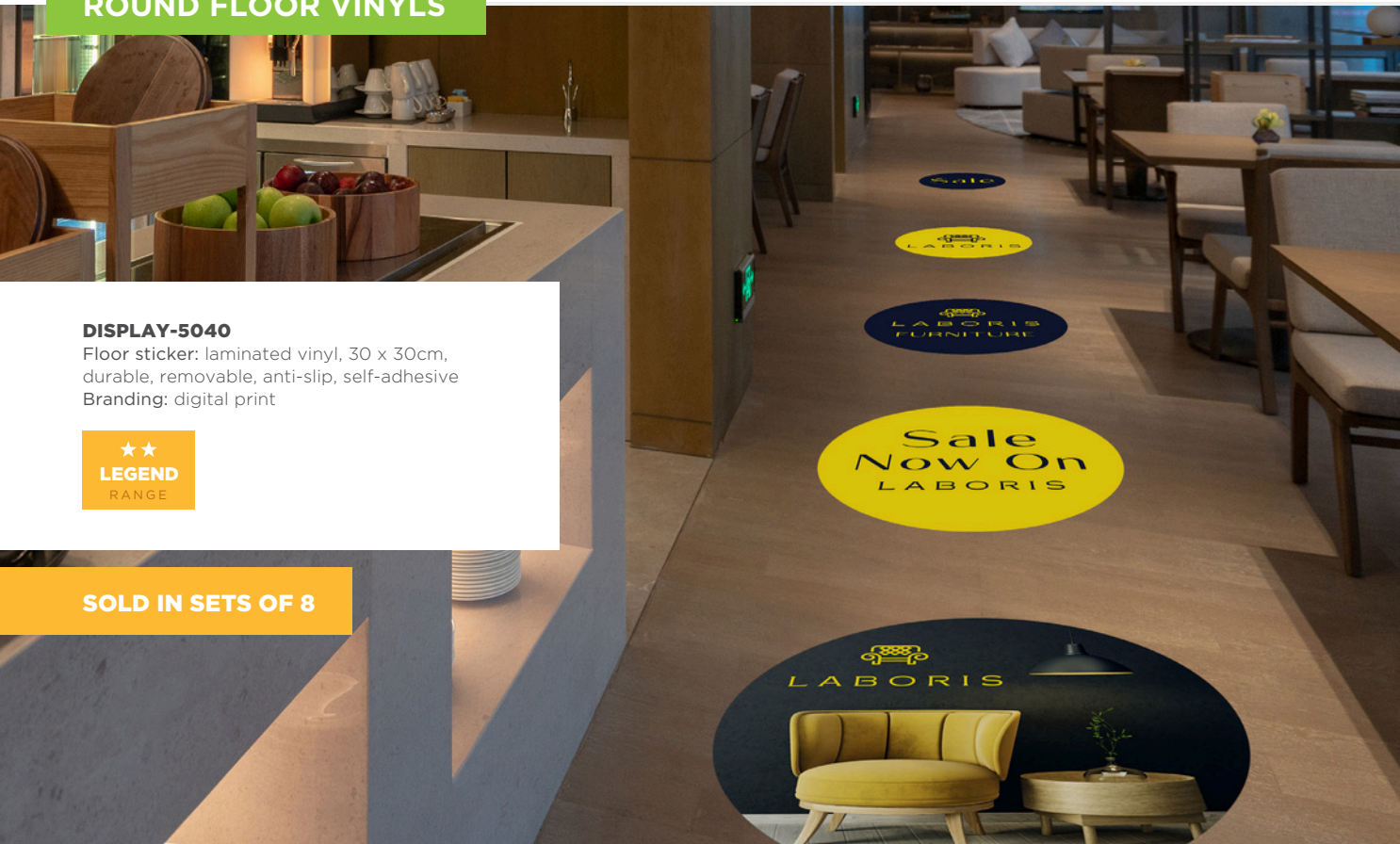


DISPLAY-5045
Floor sticker: laminated vinyl, 30 x 30cm, durable, removable, anti-slip, self-adhesive
Branding: digital print

★★
LEGEND
RANGE

SOLD IN SETS OF 8

ROUND FLOOR VINYL

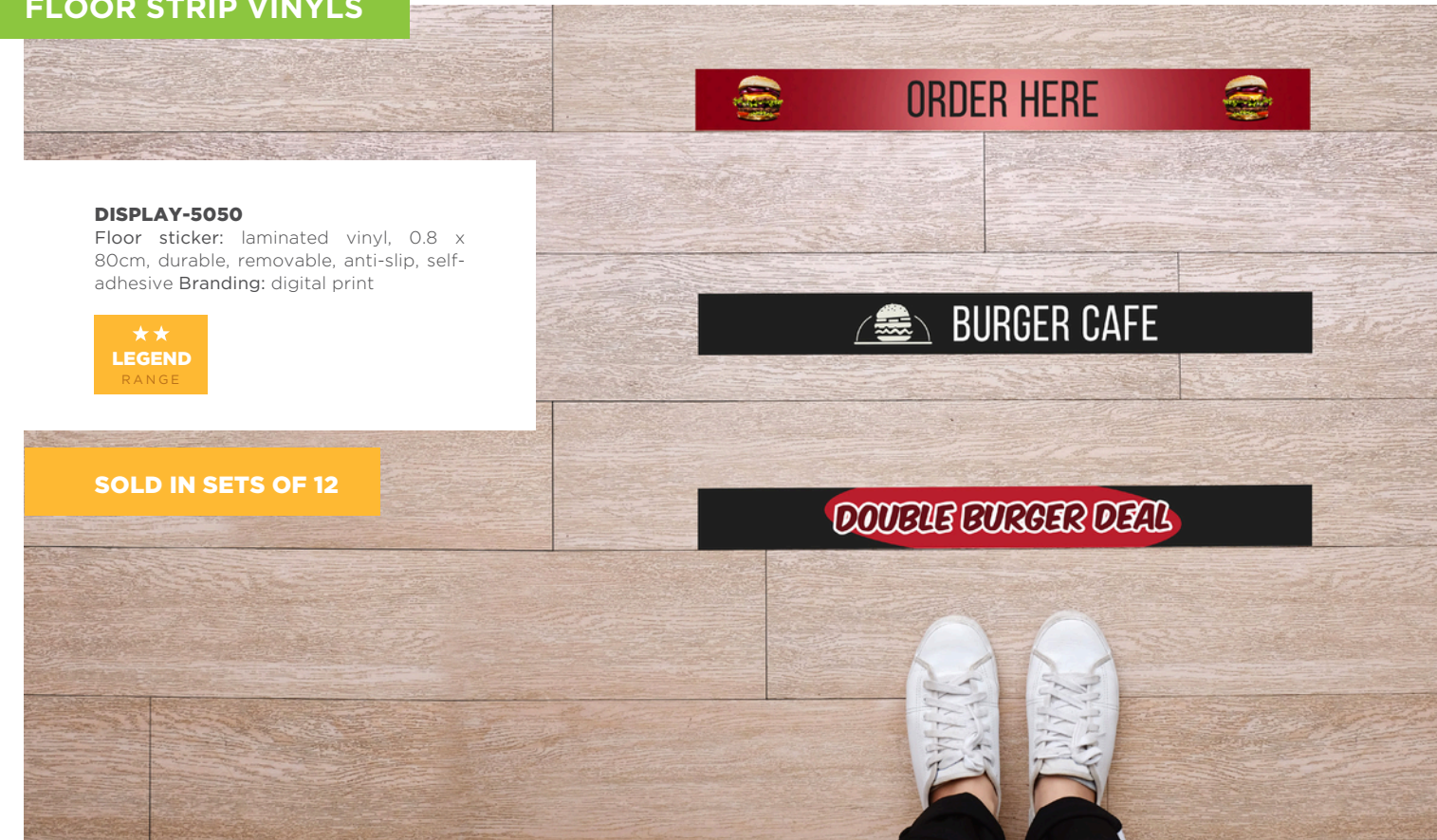


DISPLAY-5040
Floor sticker: laminated vinyl, 30 x 30cm, durable, removable, anti-slip, self-adhesive
Branding: digital print

★★
LEGEND
RANGE

SOLD IN SETS OF 8

FLOOR STRIP VINYL



DISPLAY-5050
Floor sticker: laminated vinyl, 0.8 x 80cm, durable, removable, anti-slip, self-adhesive
Branding: digital print

★★
LEGEND
RANGE

SOLD IN SETS OF 12



BANNERS

X-BANNERS

Sporting a unique and funky design, our attention-grabbing X-Banners are the most cost-effective mobile display solution for any brand. Their compact and lightweight design makes them extremely easy-to-assemble and dismantle.

The skins are available in Layflat Display PVC or Polyester Gazebo Display Fabric, which easily attach to the frame and store very well – making this range ideal for interchangeable artwork.

PULL UP BANNERS

Advertising your brand, products or services has never been easier! This range is compact, lightweight and durable, allowing setup within minutes. When all is said and done, the artwork simply retracts into the protective base and fits into a convenient carry bag.

Our Pull Up Banners are available in the following ranges:



CHAMPION RANGE

An entry level option, offering great value without compromising on quality.



LEGEND RANGE

Our middle of the range offering, with a slim design and chromed end caps for an upmarket and refined finish.



OVATION RANGE

Defined by premium quality construction and durability at a competitive price point.

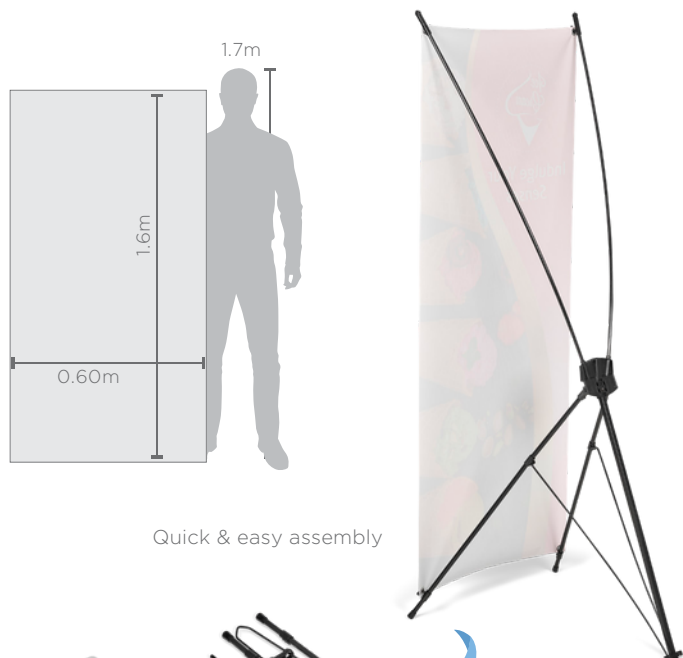


X-BANNERS

SPECIFICATIONS

- Weight: 2kg
- 1 x frame: steel & fibre glass
- Frame assembled size: 0.60 x 1.6 x 0.80m
- Bag: Nylon
- Bag size: 112 x 15cm

| | DISPLAY-6000 | DISPLAY-6010 |
|--|-------------------------------|--|
| Skin included | 1 x banner skin | 1 x banner skin |
| Material | Layflat PVC | Gazebo display fabric |
| Visual size | 0.60 x 1.6m | 0.60 x 1.6m |
| Features | Roll-up neatly into carry bag | Roll-up neatly into carry bag Crease resistant fabric |
| Branding | Single-sided digital print | Single-sided sublimation |
| Range | ★ CHAMPION RANGE | ★ CHAMPION RANGE |
| Refresh the banner for multiple campaigns by buying a new skin | | |
| Reskin Code | SKIN-6000 | SKIN-6010 |



Quick & easy assembly

X-Banner frame folds down for easy storage

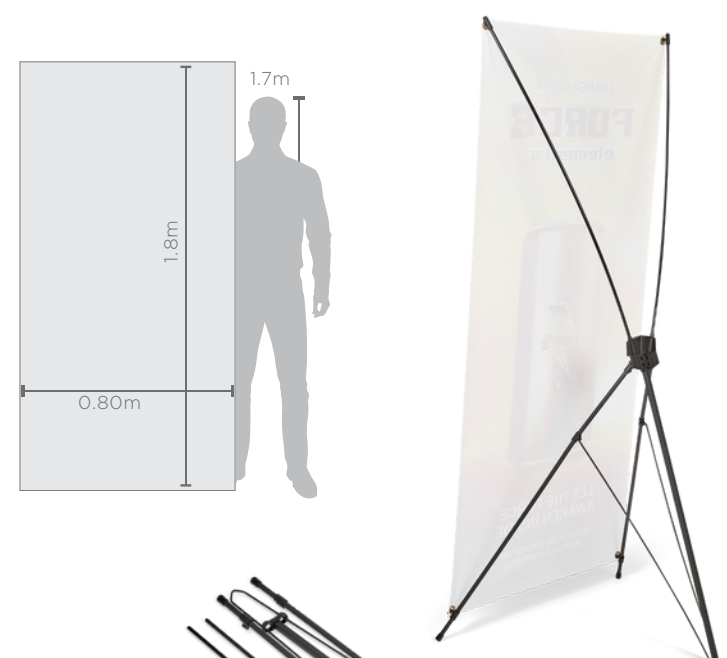
PVC banner skin must be rolled to avoid creasing

X-BANNERS

SPECIFICATIONS

- Weight: 2.25kg
- 1 x frame: steel & fibre glass
- Frame assembled size: 0.80 x 1.8 x 0.87m
- Bag: Nylon
- Bag size: 123 x 17cm

| | DISPLAY-6005 | DISPLAY-6015 |
|--|-------------------------------|-------------------------------|
| Skin included | 1 x banner skin | 1 x banner skin |
| Material | Layflat PVC | Gazebo display fabric |
| Visual size | 0.80 x 1.8m | 0.80 x 1.8m |
| Features | Roll-up neatly into carry bag | Roll-up neatly into carry bag |
| Branding | Single-sided digital print | Single-sided sublimation |
| Range | ★ CHAMPION RANGE | ★ CHAMPION RANGE |
| Refresh the banner for multiple campaigns by buying a new skin | | |
| Reskin Code | SKIN-6005 | SKIN-6015 |



Gazebo display fabric



Carry bag included



Carry bag included

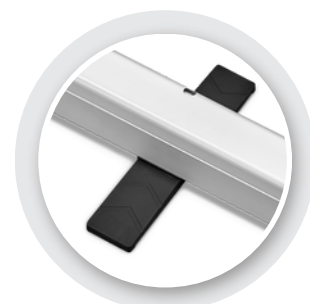
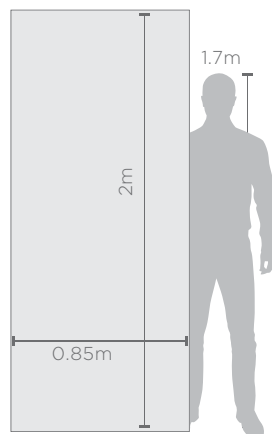


PULL UP BANNERS

SPECIFICATIONS

- Weight: 2.9kg
- 1 x frame: aluminium
- Frame assembled size: 0.85 x 2 x 0.1m
- Bag: polyester oxford
- Bag size: 90 x 8 x 8cm

| | DISPLAY-4000 | DISPLAY-4005 |
|--|----------------------------|--------------------------|
| Skin included | 1 x banner skin | 1 x banner skin |
| Material | Layflat PVC | Gazebo display fabric |
| Visual size | 0.85 x 2m | 0.85 x 2m |
| Branding | Single-sided digital print | Single-sided sublimation |
| Range | ★ CHAMPION RANGE | ★ CHAMPION RANGE |
| Refresh the banner for multiple campaigns by buying a new skin | | |
| Reskin Code | SKIN-4000 | SKIN-4005 |



Foot on base of banner for extra stability



Frame folds up easily to fit into carry bag

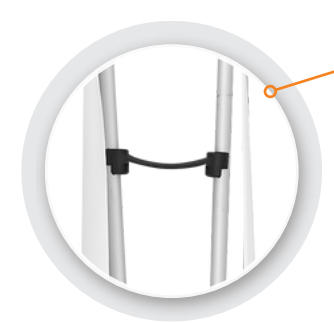
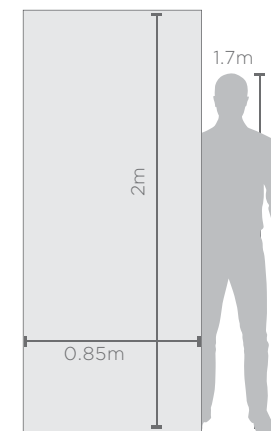


DOUBLE-SIDED PULL UP BANNERS

SPECIFICATIONS

- Weight: 5.8kg
- 2 x frames: aluminium
- Frame assembled size: 0.85 x 2 x 0.2m
- 2 interlocking mechanisms, positioned back to back
- 2 x bags: polyester oxford
- Bag size: 90 x 8 x 8cm
- 1 x adapter kit: PP

| | DISPLAY-4030 | DISPLAY-4035 |
|--|---|---|
| Skin included | 2 x banner skins | 2 x banner skins |
| Material | Layflat PVC | Gazebo display fabric |
| Visual size | 0.85 x 2m | 0.85 x 2m |
| Branding | 2 x single-sided digital prints. One print attached to each mechanism, making branding visible from both sides. | 2 x single-sided sublimation prints. One print attached to each mechanism, making branding visible from both sides. |
| Range | ★ CHAMPION RANGE | ★ CHAMPION RANGE |
| Refresh the banner for multiple campaigns by buying a new skin | | |
| Reskin Code | 2 x SKIN-4000 | 2 x SKIN-4005 |



Pole brace adapter for stability



Frame folds up easily to fit into carry bag

1 x interlocking kit included

Convert 2 Champion Pull Up Banners into a double-sided display unit, by adding the ADAPT-4000 interlocking kit.

PULL UP BANNERS

SPECIFICATIONS

- Weight: 4.5kg
- 1 x frame: aluminium
- Frame assembled size: 0.85 x 2 x 0.1m
- Bag: polyester oxford
- Bag size: 90 x 12 x 13cm

| | DISPLAY-4010 | DISPLAY-4015 |
|--|----------------------------|--------------------------|
| Skin included | 1 x banner skin | 1 x banner skin |
| Material | Layflat PVC | Gazebo display fabric |
| Visual size | 0.85 x 2m | 0.85 x 2m |
| Branding | Single-sided digital print | Single-sided sublimation |
| Range | ★★ LEGEND RANGE | ★★ LEGEND RANGE |
| Refresh the banner for multiple campaigns by buying a new skin | | |
| Reskin Code | SKIN-4000 | SKIN-4005 |



Chromed end caps

To reskin these items, the hardware needs to be returned to supplier to be fitted.

PULL UP BANNERS

SPECIFICATIONS

- Weight: 5kg
- 1 x frame: aluminium
- Frame assembled size: 0.85 x 2 x 0.2m
- Bag: polyester oxford
- Bag size: 92 x 10 x 21cm

| | DISPLAY-4020 | DISPLAY-4025 |
|--|----------------------------|--------------------------|
| Skin included | 1 x banner skin | 1 x banner skin |
| Material | Layflat PVC | Gazebo display fabric |
| Visual size | 0.85 x 2m | 0.85 x 2m |
| Branding | Single-sided digital print | Single-sided sublimation |
| Range | ★★★ OVATION RANGE | ★★★ OVATION RANGE |
| Refresh the banner for multiple campaigns by buying a new skin | | |
| Reskin Code | SKIN-4000 | SKIN-4005 |



Wide base for stability with chromed end caps

To reskin these items, the hardware needs to be returned to supplier to be fitted.

BANNER WALLS

Bannerwalls provide a substantial amount of real estate to display your brand - this display solution was designed to create an impression and draw attention!

The scissor frame is made from sturdy aluminium extrusions and fitted with recycled, plastic interlocking connectors, making these displays lightweight and easy-to-assemble and collapse. The crease-resistant skins easily attach to the frame with Velcro and can be collapsed on the frame for convenient storage.

The skins are made from Polyester Display Fabric, giving this display a soft, upmarket look and feel - Ideal for studios, photoshoots, interview backgrounds, entrances, brand launches, exhibitions, trade shows and events.





STRAIGHT BANNERWALLS

SPECIFICATIONS

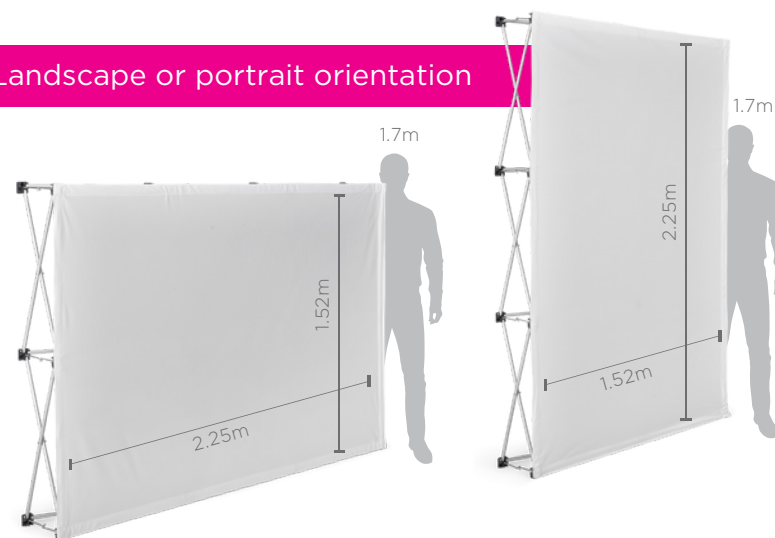
- Weight: 6.9kg
- 1 x frame: aluminium
- Frame assembled size: 1.52 x 2.25 x 0.3m
- Bag: polyester oxford
- Bag size: 85 x 29 x 24cm

| | DISPLAY-3050 |
|--|--------------------------|
| Skin included | 1 x bannerwall skin |
| Material | Polyester display fabric |
| Visual size | 1.52 x 2.25m |
| Features | Durable fabric |
| Branding | Single-sided sublimation |
| Range | ★★ LEGEND RANGE |
| Refresh the banner for multiple campaigns by buying a new skin | |
| Reskin Code | SKIN-3050 |



Collapsible scissor frame is made from sturdy aluminium extrusions and fitted with recycled, plastic interlocking connectors

Landscape or portrait orientation



Collapsible bannerwall fits easily into carry bag

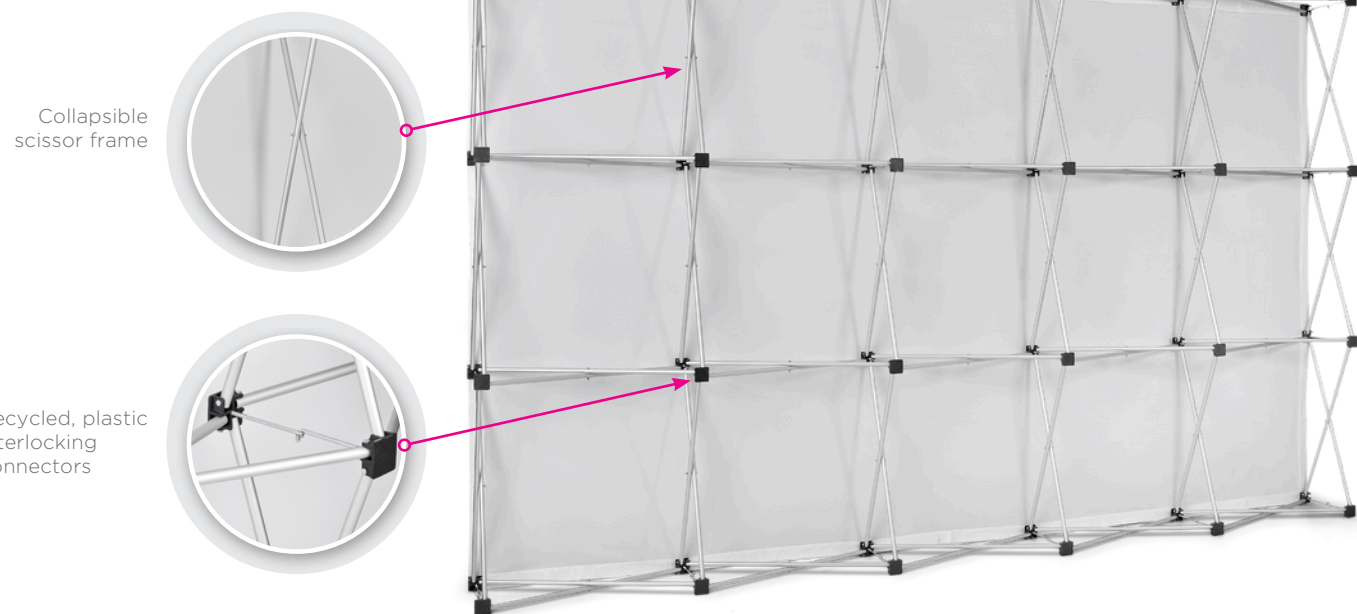
Carry bag included



STRAIGHT BANNERWALLS



| | 1 DISPLAY-3055 | 2 DISPLAY-3060 | 3 DISPLAY-3065 | 4 DISPLAY-3070 |
|--|--------------------------|--------------------------|--------------------------|--------------------------|
| Weight | 9kg | 11.2kg | 13.9kg | 15.6kg |
| Hardware | 1 x frame: aluminium | 1 x frame: aluminium | 1 x frame: aluminium | 1 x frame: aluminium |
| Frame assembled size | 2.25 x 2.25 x 0.3m | 3 x 2.25 x 0.3m | 3.7 x 2.25 x 0.3m | 4.45 x 2.25 x 0.3m |
| Bag material | Polyester oxford | Polyester oxford | Polyester oxford | Polyester oxford |
| Bag size | 85 x 29 x 24cm | 85 x 29 x 27cm | 85 x 29 x 50cm | 85 x 29 x 50cm |
| Skin included | 1 x bannerwall skin | 1 x bannerwall skin | 1 x bannerwall skin | 1 x bannerwall skin |
| Material | Polyester display fabric | Polyester display fabric | Polyester display fabric | Polyester display fabric |
| Visual size | 2.25 x 2.25m | 3 x 2.25m | 3.7 x 2.25m | 4.45 x 2.25m |
| Features | Durable fabric | Durable fabric | Durable fabric | Durable fabric |
| Branding | Single-sided sublimation | Single-sided sublimation | Single-sided sublimation | Single-sided sublimation |
| Range | ★★ LEGEND RANGE | ★★ LEGEND RANGE | ★★ LEGEND RANGE | ★★ LEGEND RANGE |
| Refresh the banner for multiple campaigns by buying a new skin | | | | |
| Reskin Code | SKIN-3055 | SKIN-3060 | SKIN-3065 | SKIN-3070 |





DOUBLE-SIDED STRAIGHT BANNERWALLS

SPECIFICATIONS

- Weight: 6.9kg
- 1 x frame: aluminium
- Frame assembled size: 1.52 x 2.25 x 0.3m
- Double-sided
- Bag: polyester oxford
- Bag size: 85 x 29 x 24cm

Carry bag included

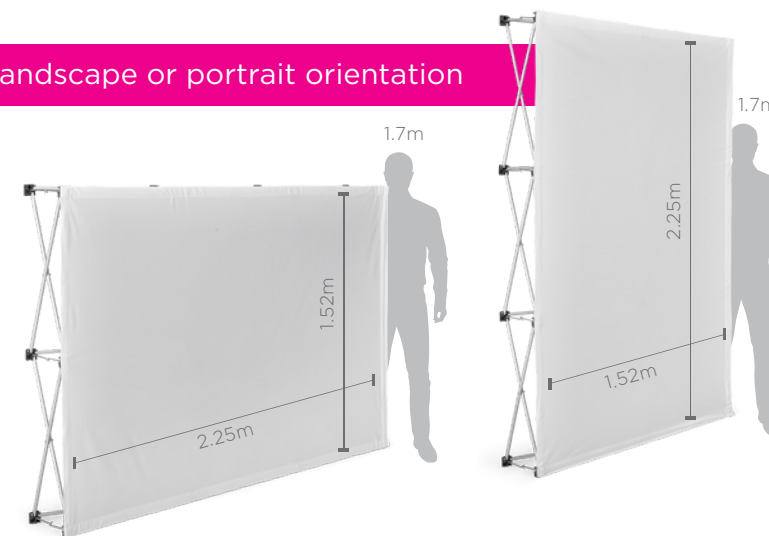


Second bannerwall skin



Collapsible bannerwall fits easily into carry bag

Landscape or portrait orientation



| DISPLAY-3075 | |
|--|---|
| Skin included | 2 x bannerwall skins |
| Material | Polyester display fabric |
| Visual size | 1.52 x 2.25m |
| Features | Durable fabric |
| Branding | 2 x single-sided sublimation prints. One print attached to each side of the frame, making branding visible from both sides. |
| Range | ★★ LEGEND RANGE |
| Refresh the banner for multiple campaigns by buying a new skin | |
| Reskin Code | 2 x SKIN-3050 |



DOUBLE-SIDED STRAIGHT BANNERWALLS



| | 1 DISPLAY-3080 | 2 DISPLAY-3085 | 3 DISPLAY-3090 | 4 DISPLAY-3095 |
|--|---|---|---|---|
| Weight | 9kg | 11.2kg | 13.9kg | 15.6kg |
| Hardware | 1 x frame: aluminium | 1 x frame: aluminium | 1 x frame: aluminium | 1 x frame: aluminium |
| Frame assembled size | 2.25 x 2.25 x 0.3m | 3 x 2.25 x 0.3m | 3.7 x 2.25 x 0.3m | 4.45 x 2.25 x 0.3m |
| Bag material | Polyester oxford | Polyester oxford | Polyester oxford | Polyester oxford |
| Bag size | 85 x 29 x 24cm | 85 x 29 x 27cm | 85 x 29 x 50cm | 85 x 29 x 50cm |
| Skin included | 2 x bannerwall skins | 2 x bannerwall skins | 2 x bannerwall skins | 2 x bannerwall skins |
| Material | Polyester display fabric | Polyester display fabric | Polyester display fabric | Polyester display fabric |
| Visual size | 2.25 x 2.25m | 3 x 2.25m | 3.7 x 2.25m | 4.45 x 2.25m |
| Features | Durable fabric | Durable fabric | Durable fabric | Durable fabric |
| Branding | 2 x single-sided sublimation prints. One print attached to each side of the frame, making branding visible from both sides. | 2 x single-sided sublimation prints. One print attached to each side of the frame, making branding visible from both sides. | 2 x single-sided sublimation prints. One print attached to each side of the frame, making branding visible from both sides. | 2 x single-sided sublimation prints. One print attached to each side of the frame, making branding visible from both sides. |
| Range | ★★ LEGEND RANGE | ★★ LEGEND RANGE | ★★ LEGEND RANGE | ★★ LEGEND RANGE |
| Refresh the banner for multiple campaigns by buying a new skin | | | | |
| Reskin Code | 2 x SKIN-3055 | 2 x SKIN-3060 | 2 x SKIN-3065 | 2 x SKIN-3070 |



Skin easily attaches to frame with Velcro



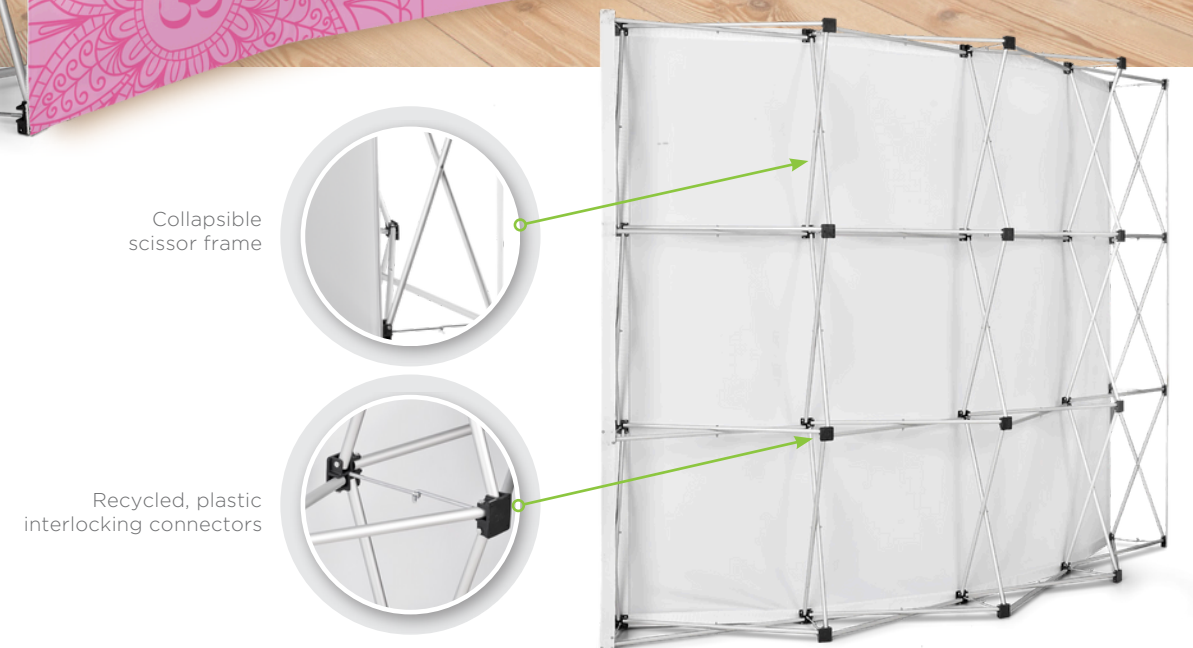
Velcro is fitted around all edges of the frame allowing prints to be attached to both sides



CURVED BANNERWALLS



| | 1 DISPLAY-3000 | 2 DISPLAY-3005 | 3 DISPLAY-3010 | 4 DISPLAY-3015 | 5 DISPLAY-3020 |
|--|--------------------------|--------------------------|--------------------------|--------------------------|--------------------------|
| Weight | 8kg | 9.2kg | 11.3kg | 14.2kg | 16.4kg |
| Hardware | 1 x frame: aluminium | 1 x frame: aluminium | 1 x frame: aluminium | 1 x frame: aluminium | 1 x frame: aluminium |
| Frame assembled size | 1.45 x 2.25 x 0.3m | 2.15 x 2.25 x 0.3m | 2.85 x 2.25 x 0.3m | 3.5 x 2.25 x 0.3m | 4.2 x 2.25 x 0.3m |
| Bag material | Polyester oxford | Polyester oxford | Polyester oxford | Polyester oxford | Polyester oxford |
| Bag size | 85 x 24 x 27cm | 85 x 30 x 27cm | 85 x 27 x 33cm | 85 x 30 x 38cm | 82 x 25 x 50cm |
| Skin included | 1 x bannerwall skin | 1 x bannerwall skin | 1 x bannerwall skin | 1 x bannerwall skin | 1 x bannerwall skin |
| Material | Polyester display fabric | Polyester display fabric | Polyester display fabric | Polyester display fabric | Polyester display fabric |
| Visual size | 1.45 x 2.25m | 2.15 x 2.25m | 2.85 x 2.25m | 3.5 x 2.25m | 4.2 x 2.25m |
| Features | Durable fabric | Durable fabric | Durable fabric | Durable fabric | Durable fabric |
| Branding | Single-sided sublimation | Single-sided sublimation | Single-sided sublimation | Single-sided sublimation | Single-sided sublimation |
| Range | ★★ LEGEND RANGE | ★★ LEGEND RANGE | ★★ LEGEND RANGE | ★★ LEGEND RANGE | ★★ LEGEND RANGE |
| Refresh the banner for multiple campaigns by buying a new skin | | | | | |
| Reskin Code | SKIN-3000 | SKIN-3005 | SKIN-3010 | SKIN-3015 | SKIN-3020 |





CURVED BANNERWALLS WITH WINGS



| | 1 DISPLAY-3025 | 2 DISPLAY-3030 | 3 DISPLAY-3035 | 4 DISPLAY-3040 | 5 DISPLAY-3045 |
|--|--------------------------------|--------------------------------|--------------------------------|--------------------------------|--------------------------------|
| Weight | 8kg | 9.2kg | 11.3kg | 14.2kg | 16.4kg |
| Hardware | 1 x frame: aluminium | 1 x frame: aluminium | 1 x frame: aluminium | 1 x frame: aluminium | 1 x frame: aluminium |
| Frame assembled size | 1.45 x 2.25 x 0.3m | 2.15 x 2.25 x 0.3m | 2.85 x 2.25 x 0.3m | 3.5 x 2.25 x 0.3m | 4.2 x 2.25 x 0.3m |
| Bag material | Polyester oxford | Polyester oxford | Polyester oxford | Polyester oxford | Polyester oxford |
| Bag size | 85 x 24 x 27cm | 85 x 30 x 27cm | 85 x 27 x 33cm | 85 x 30 x 38cm | 82 x 25 x 50cm |
| Wings material | 2 x wings: PP | 2 x wings: PP | 2 x wings: PP | 2 x wings: PP | 2 x wings: PP |
| Wing features | Allows for wrap around visuals | Allows for wrap around visuals | Allows for wrap around visuals | Allows for wrap around visuals | Allows for wrap around visuals |
| Skin included | 1 x bannerwall skin | 1 x bannerwall skin | 1 x bannerwall skin | 1 x bannerwall skin | 1 x bannerwall skin |
| Material | Polyester display fabric | Polyester display fabric | Polyester display fabric | Polyester display fabric | Polyester display fabric |
| Visual size | 2.37 x 2.25m | 3.04 x 2.25m | 3.7 x 2.25m | 4.38 x 2.25m | 5.08 x 2.25m |
| Features | Durable fabric | Durable fabric | Durable fabric | Durable fabric | Durable fabric |
| Branding | Single-sided sublimation | Single-sided sublimation | Single-sided sublimation | Single-sided sublimation | Single-sided sublimation |
| Range | ★★ LEGEND RANGE | ★★ LEGEND RANGE | ★★ LEGEND RANGE | ★★ LEGEND RANGE | ★★ LEGEND RANGE |
| Refresh the banner for multiple campaigns by buying a new skin | | | | | |
| Reskin Code | SKIN-3025 | SKIN-3030 | SKIN-3035 | SKIN-3040 | SKIN-3045 |

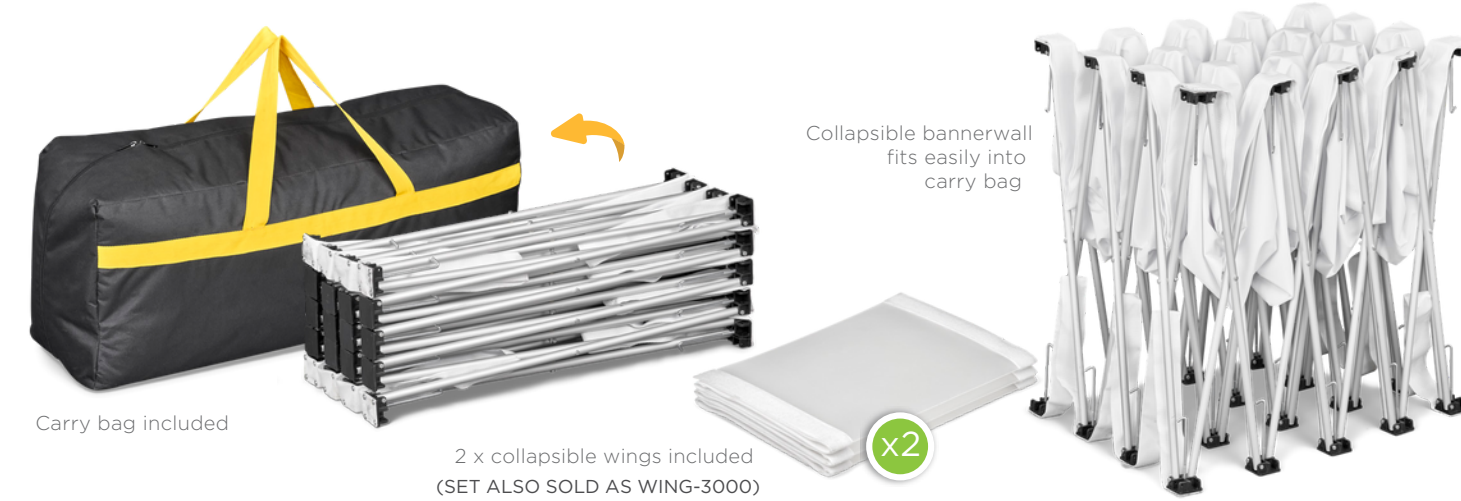


TABLE CLOTHS

Make the most of your space, maximise your brand exposure and enhance your overall appearance with our range of slip over, spandex, fabric and PVC Table Cloths.

PVC TABLE CLOTHS



DISPLAY-5020
 Weight: 0.32kg
 Material: PVC
 Size: 2 x 1.25m

Features: durable, lightweight, wipe-down, knife-cut edge
 Branding: single-sided digital print



SLIP OVER TABLE CLOTHS



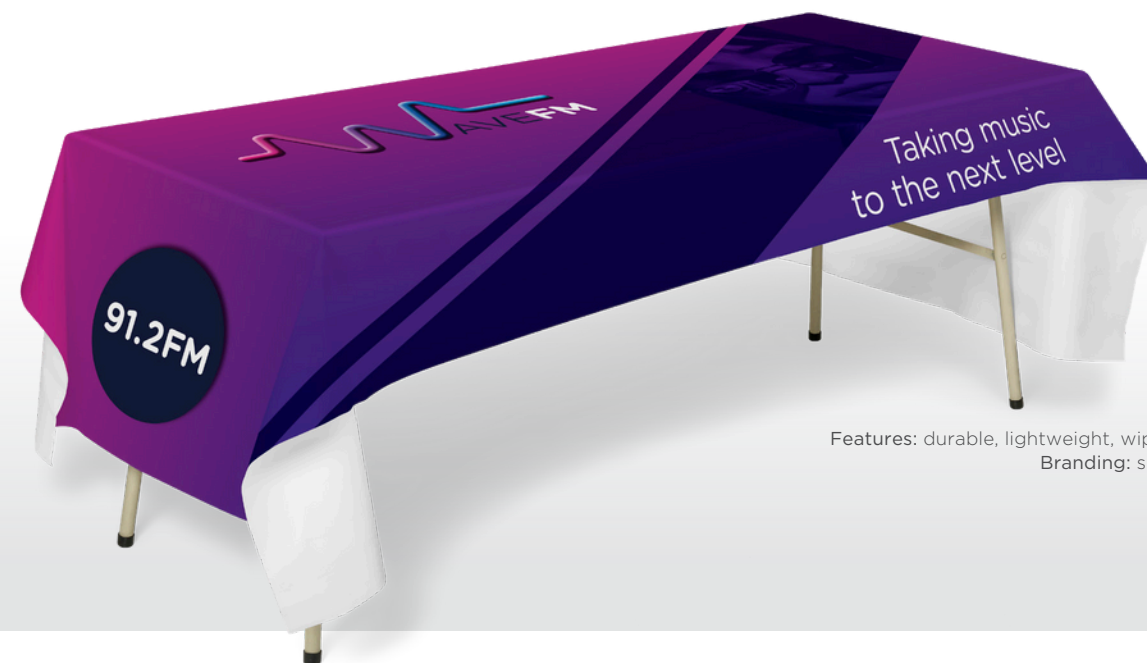
DISPLAY-5035

Weight: 1.8kg

Material: polyester spandex

Size: tailored to fit a standard trestle table: 1.83 x 0.76 x 0.75m

Features: fitted table cloth, durable, lightweight, washable, hemmed
 Branding: single-sided sublimation



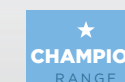
DISPLAY-5025

Weight: 0.47kg

Material: PVC

Size: 3 x 1.25m

Features: durable, lightweight, wipe-down, knife-cut edge
 Branding: single-sided digital print



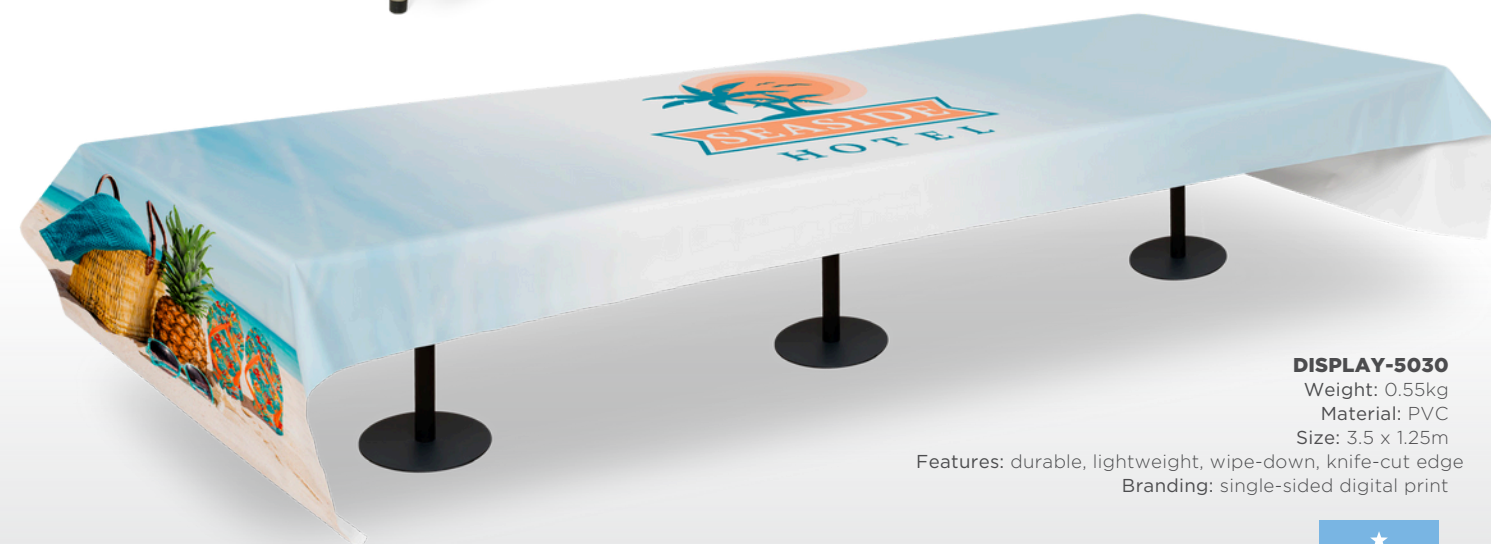
DISPLAY-5055

Weight: 1.8kg

Material: polyester display fabric

Size: tailored to fit a standard trestle table: 1.83 x 0.76 x 0.75m

Features: fitted table cloth, durable, washable, hemmed
 Branding: single-sided sublimation



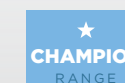
DISPLAY-5030

Weight: 0.55kg

Material: PVC

Size: 3.5 x 1.25m

Features: durable, lightweight, wipe-down, knife-cut edge
 Branding: single-sided digital print



FABRIC TABLE CLOTHS



DISPLAY-5000
 Weight: 0.51kg
 Material: polyester display fabric
 Size: 2 x 1m
 Features: durable, lightweight, washable, hemmed
 Branding: single-sided sublimation



DISPLAY-5010
 Weight: 1.255kg
 Material: polyester display fabric
 Size: 3.5 x 1.5m
 Features: durable, lightweight, washable, hemmed
 Branding: single-sided sublimation



DISPLAY-5005
 Weight: 0.90kg
 Material: polyester display fabric
 Size: 2.5 x 1.5m
 Features: durable, lightweight, washable, hemmed
 Branding: single-sided sublimation



DISPLAY-5015
 Weight: 1.84kg
 Material: polyester display fabric
 Size: 3.35 x 2.25m
 Features: durable, lightweight, washable, hemmed
 Branding: single-sided sublimation





FLAGS

DESK FLAGS

Ideal for client gifts, Desk Flags offer a unique platform to show your support, back a team, unite for a cause or celebrate your heritage.

HAND FLAGS

Let your brand make waves!

Ideal for sporting events, marches and commemorating special events or holidays – this range is bound to be a crowd-pleasing favourite.



FLAG FOUNTAINS

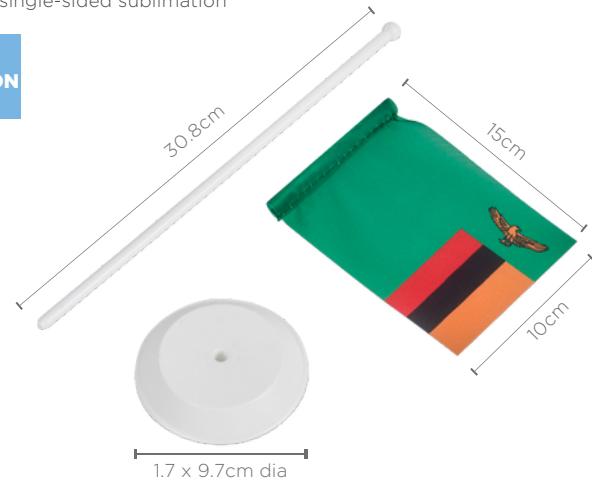
Available in four and five pole configurations, these flags attach to a single base allowing you to promote multiple messages simultaneously.

The lightweight, anti-fray fabric allows for a reversed visual – ideal for car dealerships, forecourts, brand activations and events.



DESK FLAGS

DISPLAY-1000
 Weight: 0.15kg
 Pole: PP, 30.8cm
 Base: PP, 1.7 x 9.7cm dia
 Material: polyester warp knit, anti-fray
 Visual size: 15 x 10cm
 Branding: single-sided sublimation



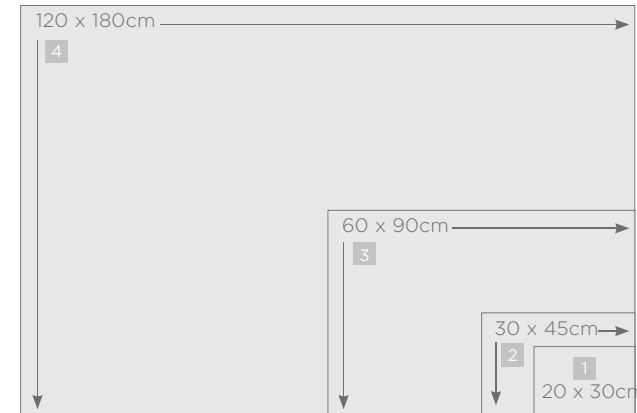
DISPLAY-1005
 Weight: 0.16kg
 Pole: PP, 30.8cm
 Base: PP, 1.7 x 9.7cm dia
 Material: polyester warp knit, anti-fray
 Visual size: 22 x 15cm
 Branding: single-sided sublimation



HAND FLAGS

1 DISPLAY-1010
 Weight: 0.20kg Dowel: wood, 45 x 0.6cm dia
 Material: polyester warp knit, anti-fray
 Visual size: 20 x 30cm
 Branding: single-sided sublimation

2 DISPLAY-1015
 Weight: 0.22kg Dowel: wood, 90 x 1cm dia
 Material: polyester warp knit, anti-fray
 Visual size: 30 x 45cm
 Branding: single-sided sublimation



3 DISPLAY-1020
 Weight: 0.55kg
 Dowel: wood, 140 x 1.6cm dia
 Material: polyester warp knit, anti-fray
 Visual size: 60 x 90cm
 Branding: single-sided sublimation



4 DISPLAY-1040
 Weight: 0.6kg
 Dowel: wood, 180 x 1.6cm dia
 Material: polyester warp knit, anti-fray
 Visual size: 120 x 180cm
 Branding: single-sided sublimation



FLAG FOUNTAINS



1 Flag fountain base

DISPLAY-1025
 Weight: 14.35kg
 Hardware: 4 x poles: aluminium & steel, 6m
 Hardware bag: polyester oxford, 144 x 34cm
 Base: steel, 1 x 1m
 Base bag: Polyester oxford, 60 x 20 x 15cm
 Material: 4 x flag skins, polyester warp knit, anti-fray
 Visual size: 1 x 4m
 Branding: single-sided sublimation

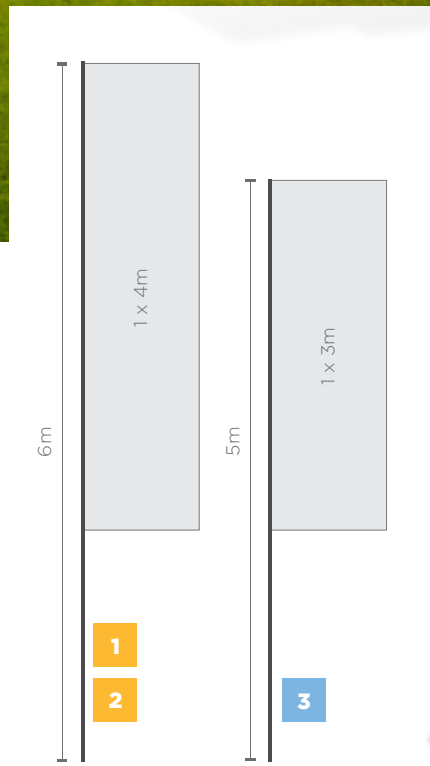
Refresh the flag fountain for multiple campaigns by buying a new skin
 Reskin code: FLAG-1030



2 Flag fountain base

DISPLAY-1030
 Weight: 16.05kg
 Hardware: 5 x poles: aluminium & steel, 6m
 Hardware bag: polyester oxford, 144 x 34cm
 Base: steel, 1 x 1m
 Base bag: Polyester oxford, 60 x 20 x 15cm
 Material: 5 x flag skins, polyester warp knit, anti-fray
 Visual size: 1 x 4m
 Branding: single-sided sublimation

Refresh the flag fountain for multiple campaigns by buying a new skin
 Reskin code: FLAG-1030



3 Flag fountain base

DISPLAY-1035
 Weight: 8.1kg
 Hardware: 4 x poles: aluminium & steel, 5m
 Hardware bag: polyester oxford, 137 x 34cm
 Base: steel, 0.79 x 0.79m
 Base bag: Polyester oxford, 60 x 16 x 15cm
 Material: 4 x flag skins, polyester warp knit, anti-fray
 Visual size: 1 x 3m
 Branding: single-sided sublimation

Refresh the flag fountain for multiple campaigns by buying a new skin
 Reskin code: FLAG-1025





POP-UP BANNER

This high-impact display solution literally pops up and assembles itself!

Our Pop-Up Banners are manufactured with a crease-resistant Polyester, which easily twists and folds into a convenient carry bag.

Ideal for golf days and sporting events - the double-sided design allows you to maximise your brand exposure.



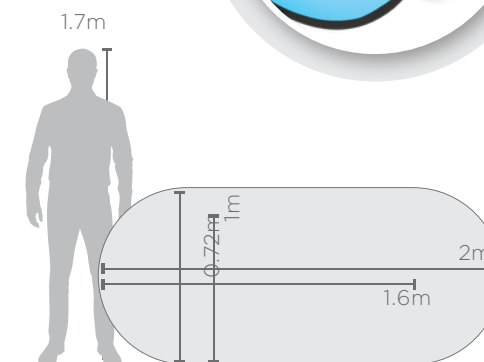
POP-UP BANNER



Twist and fold to fit into bag



Double-sided for maximum visibility



| | DISPLAY-8020 | VI-AM-210-D |
|--|---|---|
| Weight | 3.1kg | 2.9kg |
| Hardware | 1 x frame: fibre rod | 1 x frame: fibre rod |
| Frame assembled size | 2 x 1 x 0.4m | 1.6 x 0.72m |
| Bag material | Polyester oxford | Polyester oxford |
| Bag size | 85cm dia | 85cm dia |
| Skin included | 2 x pop-up skins | 2 x pop-up skins |
| Material | Polyester display fabric | Polyester display fabric |
| Visual size | 1.98 x 0.9m | 1.6 x 0.72m |
| Features | Crease resistant, lightweight, easy setup 4 x ground spikes: steel | Crease resistant, lightweight, easy setup 4 x ground spikes: steel |
| Accessories | 2 x single-sided sublimation prints tailored to fit the frame, making branding visible from both sides. | 2 x single-sided sublimation prints tailored to fit the frame, making branding visible from both sides. |
| Branding | | |
| Range | ★★ LEGEND RANGE | ★★ LEGEND RANGE |
| Refresh the banner for multiple campaigns by buying a new skin | | |
| Reskin Code | 2 x SKIN-8020 | 2 x PU-AM-4-D |

To reskin these items, the hardware needs to be returned to supplier to be fitted.



SUBLIMATED A-FRAME BANNERS

Ideal for indoor or outdoor use, our A-Frames are manufactured with a sturdy aluminium frame, which is lightweight and easy-to-assemble. The skins easily attach to the frame with Velcro straps making this solution ideal for interchangeable artwork.

This display can be purchased with your choice of Blockout PVC Skins or Polyester Display Fabric Skins depending on your requirements.

BLOCKOUT PVC

A lightweight and resilient substrate with 100% opacity, which prevents light from filtering through the display - ensuring maximum visibility indoors and outdoors.

POLYESTER DISPLAY FABRIC

A lightweight, crease-resistant fabric that can be washed in cold water and easily stored - recommended for indoor use.



Fabric skins have white backing

Double-sided for maximum visibility

Blockout PVC skins have black backing



A-FRAME BANNERS

Carry bag included

| | DISPLAY-8000 | DISPLAY-8005 | DISPLAY-8010 | DISPLAY-8015 |
|--|---|---|---|---|
| Weight | 3.2kg | 3.8kg | 3.2kg | 3.8kg |
| Hardware | 1 x frame: aluminium | 1 x frame: aluminium | 1 x frame: aluminium | 1 x frame: aluminium |
| Frame assembled size | 2 x 1 x 1m | 3 x 1 x 1m | 2 x 1 x 1m | 3 x 1 x 1m |
| Bag material | Polyester oxford | Polyester oxford | Polyester oxford | Polyester oxford |
| Bag size | 129 x 23cm | 129 x 23cm | 129 x 23cm | 129 x 23cm |
| Skin included | 2 x A-frame skins | 2 x A-frame skins | 2 x A-frame skins | 2 x A-frame skins |
| Material | PVC | PVC | Polyester display fabric | Polyester display fabric |
| Visual size | 1.95 x 0.95m | 2.95 x 0.95m | 1.95 x 0.95m | 2.95 x 0.95m |
| Features | UV stable | UV stable | Crease resistant | Crease resistant |
| Branding | 2 x single-sided digital prints tailored to fit the frame, making branding visible from both sides. | 2 x single-sided digital prints tailored to fit the frame, making branding visible from both sides. | 2 x single-sided sublimation prints tailored to fit the frame, making branding visible from both sides. | 2 x single-sided sublimation prints tailored to fit the frame, making branding visible from both sides. |
| Range | ★ CHAMPION RANGE | ★ CHAMPION RANGE | ★★ LEGEND RANGE | ★★ LEGEND RANGE |
| Refresh the banner for multiple campaigns by buying a new skin | | | | |
| Reskin Code | 2 x SKIN-8000 | 2 x SKIN-8005 | 2 x SKIN-8010 | 2 x SKIN-8015 |



FADE RESISTANT A-FRAME BANNERS

Our Fade Resistant Displays are printed with state-of-the-art Latex Gen-4 inks, boasting the widest colour gamut on the market.

This allows us to print the widest range of colours within the colour spectrum and produce the most vibrant and vivid print results.

The inks have a low environmental impact, are UV stable and scratch resistant, providing great durability for long-term outdoor exposure.

Premium polyester fabric with a unique print-guard coating is used for all of our Fade Resistant A-Frame Banners

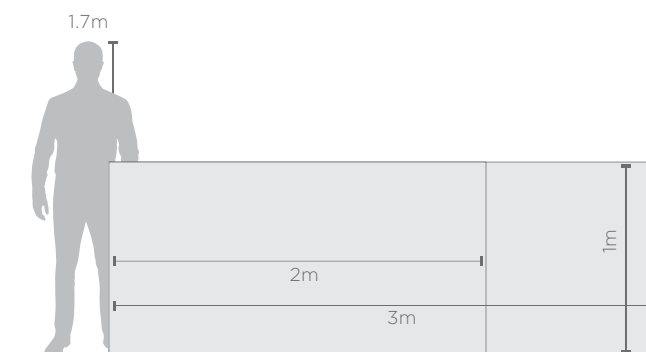


A-FRAME BANNERS

| | VI-AM-148-D | VI-AM-146-D |
|--|---|---|
| Weight | 3.2kg | 3.8kg |
| Hardware | 1 x frame: aluminium | 1 x frame: aluminium |
| Frame assembled size | 2 x 1 x 1m | 3 x 1 x 1m |
| Bag material | Polyester oxford | Polyester oxford |
| Bag size | 129 x 23cm | 129 x 23cm |
| Skin included | 2 x A-frame skins | 2 x A-frame skins |
| Material | Polyester print-guard fabric, water resistant | Polyester print-guard fabric, water resistant |
| Visual size | 1.95 x 0.95m | 2.95 x 0.95m |
| Features | Fade resistant | Fade resistant |
| Branding | Latex Gen-4 printing | Latex Gen-4 printing |
| Range | | |
| Refresh the banner for multiple campaigns by buying a new skin | | |
| Reskin Code | AF-AM-7-D | AF-AM-8-D |



Carry bag included





FLYING BANNERS

Available in a variety of shapes and sizes, this diverse range has been designed to withstand the elements while offering high-impact visibility for your brand.

Our entire range of Arcfin, Sharkfin and Telescopic Flying Banners include a ground spike and convenient carry bag. These displays are predominantly used outdoors, however can be converted into indoor displays with our range of optional extras.

SINGLE-SIDED FLYING BANNERS

Only sold in pairs - this option offers exceptional value at an extremely competitive price point.

DOUBLE-SIDED FLYING BANNERS

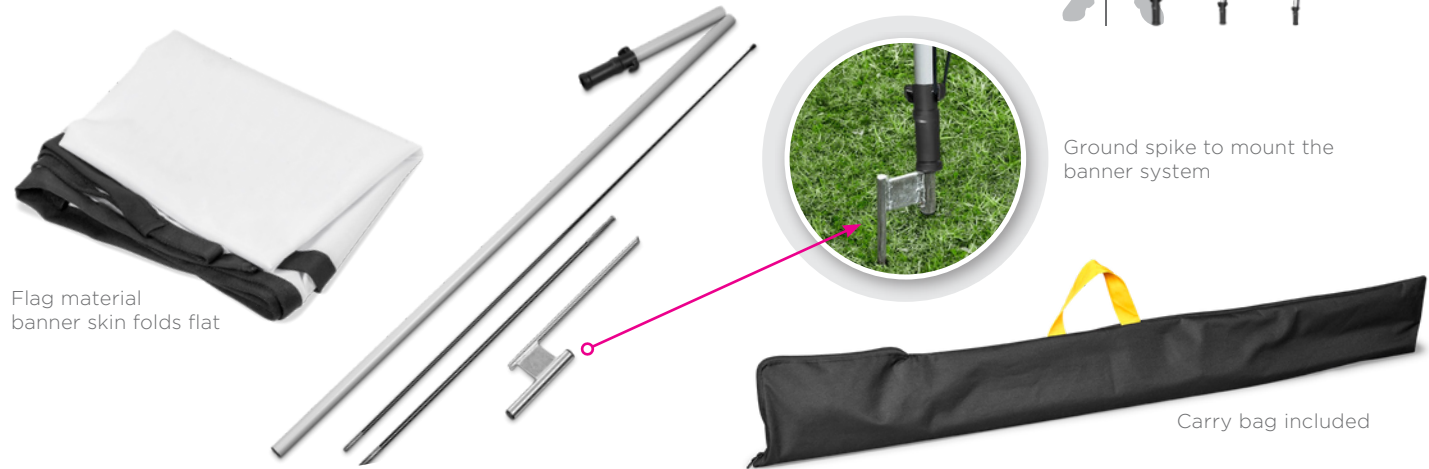
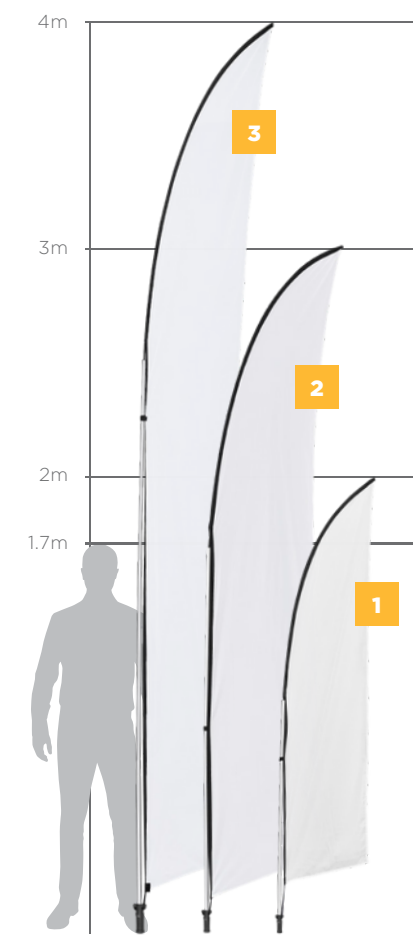
Two skins are tailored back-to-back with blockout material in between to offer a perfect double-sided visual.





ARCFIN FLYING BANNERS

| | 1 DISPLAY-7022 | 2 DISPLAY-7023 | 3 DISPLAY-7024 |
|--|--|--|--|
| | Sold in sets of 2, info below is per unit | | |
| Weight | 1.5kg | 1.7kg | 3.6kg |
| Hardware | 2 x poles: aluminium | 2 x poles: aluminium | 3 x poles: aluminium |
| Frame assembled size | 2m | 3m | 4m |
| Accessories | 2 x rods: fibre 1 x ground spike: steel | 2 x rods: fibre 1 x ground spike: steel | 2 x rods: fibre 1 x ground spike: steel |
| Bag material | Polyester oxford | Polyester oxford | Polyester oxford |
| Bag size | 137 x 18cm | 137 x 18cm | 137 x 18cm |
| Skin included | 1 x banner skin | 1 x banner skin | 1 x banner skin |
| Material | Polyester warp knit | Polyester warp knit | Polyester warp knit |
| Visual size | 0.61 x 2.59m | 0.68 x 3.83m | 0.68 x 4.87m |
| Features | Anti-fray | Anti-fray | Anti-fray |
| Branding | Single-sided sublimation | Single-sided sublimation | Single-sided sublimation |
| Range | ★★ LEGEND RANGE | ★★ LEGEND RANGE | ★★ LEGEND RANGE |
| Refresh the banner for multiple campaigns by buying a new skin (SOLD IN SETS OF 2) | | | |
| Reskin Code | SKIN-7022 | SKIN-7023 | SKIN-7024 |



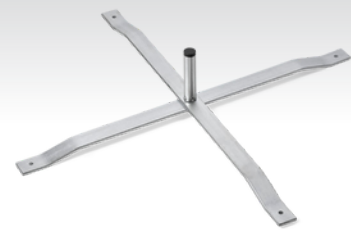
OPTIONAL EXTRAS FOR THE ARCFIN FLYING BANNERS



DISPLAY-7000
LEGEND FLYING BANNER GROUND SPIKE
ground spike: steel



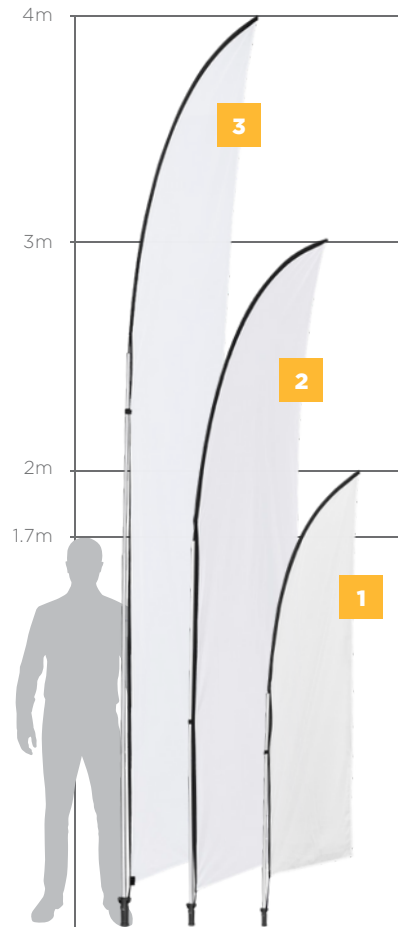
DISPLAY-7050
LEGEND FLYING BANNER 20L SQUARE WATER BASE
base: PP, refill with 20L water, collapsible



DISPLAY-7051
LEGEND FLYING BANNER SCISSOR BASE
base: steel, size: 60 x 60cm

DOUBLE-SIDED ARCFIN FLYING BANNERS

| | 1 DISPLAY-7032 | 2 DISPLAY-7033 | 3 DISPLAY-7034 |
|--|--------------------------|--------------------------|--------------------------|
| Weight | 2kg | 2.2kg | 3.2kg |
| Hardware | 2 x poles: aluminium | 2 x poles: aluminium | 3 x poles: aluminium |
| Frame assembled size | 2m | 3m | 4m |
| Accessories | 2 x rods: fibre | 2 x rods: fibre | 2 x rods: fibre |
| | 1 x ground spike: steel | 1 x ground spike: steel | 1 x ground spike: steel |
| Bag material | Polyester oxford | Polyester oxford | Polyester oxford |
| Bag size | 137 x 18cm | 137 x 18cm | 137 x 18cm |
| Skin included | 1 x banner skin | 1 x banner skin | 1 x banner skin |
| Material | Polyester warp knit | Polyester warp knit | Polyester warp knit |
| Visual size | 0.61 x 2.59m | 0.68 x 3.83m | 0.68 x 4.87m |
| Features | Anti-fray | Anti-fray | Anti-fray |
| Branding | Double-sided sublimation | Double-sided sublimation | Double-sided sublimation |
| Range | ★★ LEGEND RANGE | ★★ LEGEND RANGE | ★★ LEGEND RANGE |
| Refresh the banner for multiple campaigns by buying a new skin | | | |
| Reskin Code | SKIN-7032 | SKIN-7033 | SKIN-7034 |

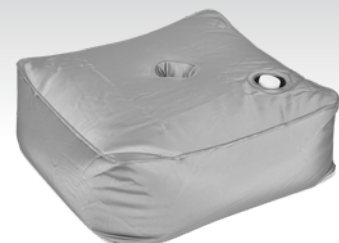


OPTIONAL EXTRAS FOR THE DOUBLE-SIDED ARCFIN FLYING BANNERS



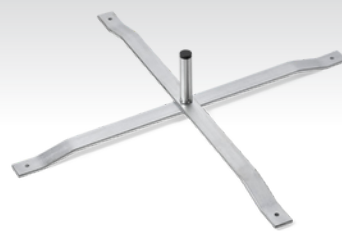
DISPLAY-7000

LEGEND FLYING BANNER GROUND SPIKE
ground spike: steel



DISPLAY-7050

LEGEND FLYING BANNER 20L SQUARE WATER BASE
base: PP, refill with 20L water, collapsible



DISPLAY-7051

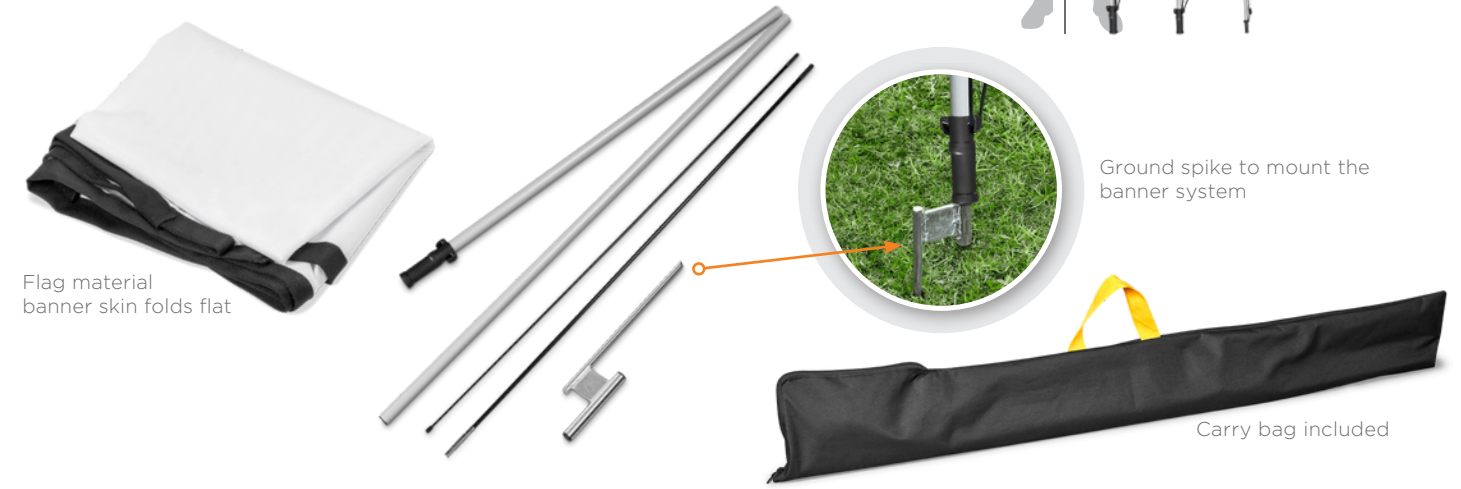
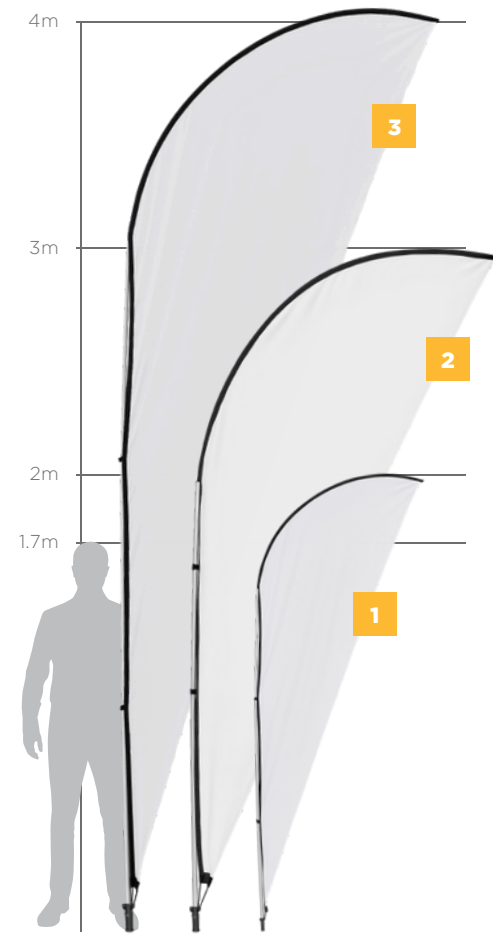
LEGEND FLYING BANNER SCISSOR BASE
base: steel, size: 60 x 60cm





SHARKFIN FLYING BANNERS

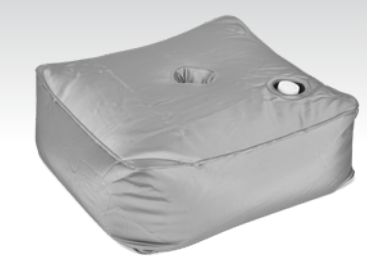
| | 1 DISPLAY-7002 | 2 DISPLAY-7003 | 3 DISPLAY-7004 |
|--|--|--|--|
| | Sold in sets of 2, info below is per unit | | |
| Weight | 1.4kg | 1.7kg | 1.9kg |
| Hardware | 2 x poles: aluminium | 2 x poles: aluminium | 3 x poles: aluminium |
| Frame assembled size | 2m | 3m | 4m |
| Accessories | 2 x rods: fibre 1 x ground spike: steel | 2 x rods: fibre 1 x ground spike: steel | 2 x rods: fibre 1 x ground spike: steel |
| Bag material | Polyester oxford | Polyester oxford | Polyester oxford |
| Bag size | 137 x 18cm | 137 x 18cm | 137 x 18cm |
| Skin included | 1 x banner skin | 1 x banner skin | 1 x banner skin |
| Material | Polyester warp knit | Polyester warp knit | Polyester warp knit |
| Visual size | 0.98 x 2.24m | 1.38 x 3.3m | 1.14 x 4.4m |
| Features | Anti-fray | Anti-fray | Anti-fray |
| Branding | Single-sided sublimation | Single-sided sublimation | Single-sided sublimation |
| Range | ★★ LEGEND RANGE | ★★ LEGEND RANGE | ★★ LEGEND RANGE |
| Refresh the banner for multiple campaigns by buying a new skin (SOLD IN SETS OF 2) | | | |
| Reskin Code | SKIN-7002 | SKIN-7003 | SKIN-7004 |



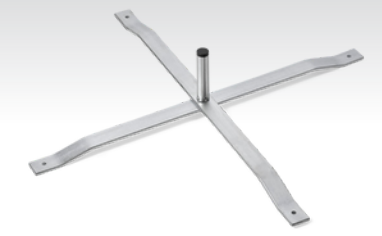
OPTIONAL EXTRAS FOR THE SHARKFIN FLYING BANNERS



DISPLAY-7000
LEGEND FLYING BANNER GROUND SPIKE
ground spike: steel



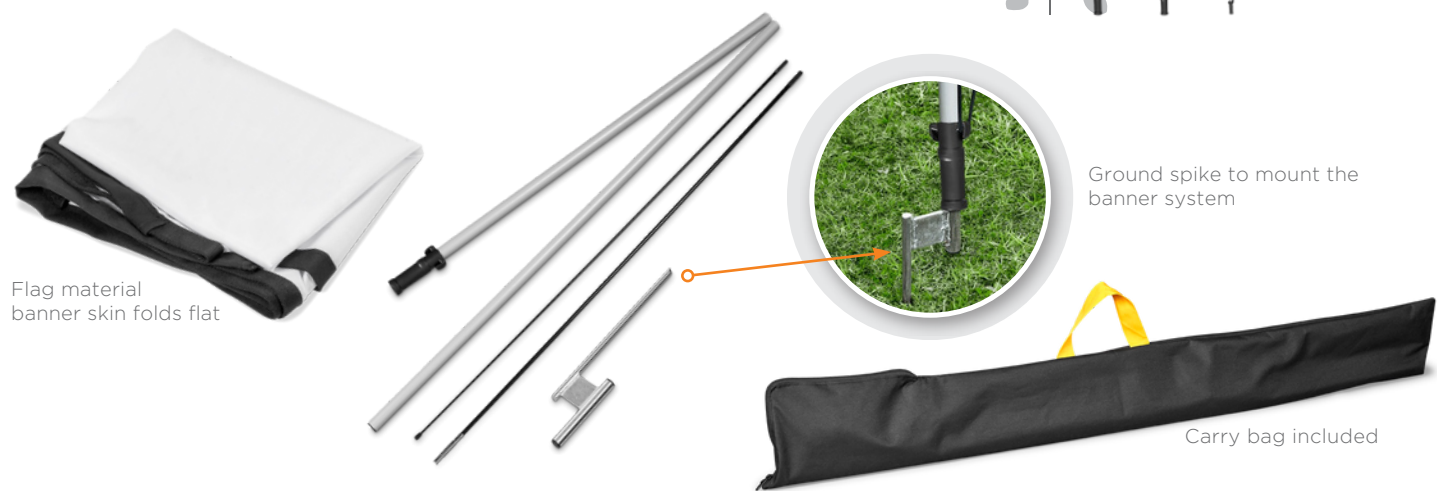
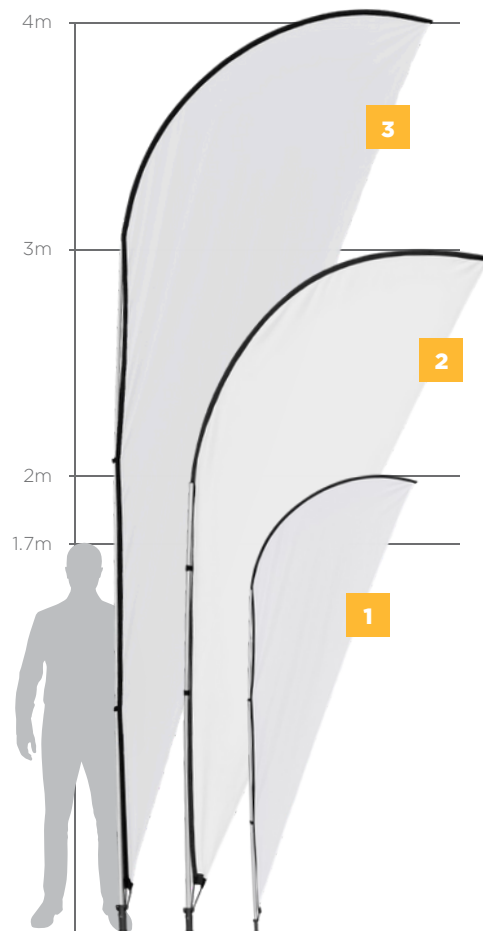
DISPLAY-7050
LEGEND FLYING BANNER 20L SQUARE WATER BASE
base: PP, refill with 20L water, collapsible



DISPLAY-7051
LEGEND FLYING BANNER SCISSOR BASE
base: steel, size: 60 x 60cm

DOUBLE-SIDED SHARKFIN FLYING BANNERS

| | 1 DISPLAY-7012 | 2 DISPLAY-7013 | 3 DISPLAY-7014 |
|--|--|--|--|
| Weight | 2kg | 2.2kg | 3.2kg |
| Hardware | 2 x poles: aluminium | 2 x poles: aluminium | 3 x poles: aluminium |
| Frame assembled size | 2m | 3m | 4m |
| Accessories | 2 x rods: fibre 1 x ground spike: steel | 2 x rods: fibre 1 x ground spike: steel | 2 x rods: fibre 1 x ground spike: steel |
| Bag material | Polyester oxford | Polyester oxford | Polyester oxford |
| Bag size | 137 x 18cm | 137 x 18cm | 137 x 18cm |
| Skin included | 1 x banner skin | 1 x banner skin | 1 x banner skin |
| Material | Polyester warp knit | Polyester warp knit | Polyester warp knit |
| Visual size | 0.98 x 2.24m | 1.38 x 3.3m | 1.14 x 4.4m |
| Features | Anti-fray | Anti-fray | Anti-fray |
| Branding | Double-sided sublimation | Double-sided sublimation | Double-sided sublimation |
| Range | ★★ LEGEND RANGE | ★★ LEGEND RANGE | ★★ LEGEND RANGE |
| Refresh the banner for multiple campaigns by buying a new skin | | | |
| Reskin Code | SKIN-7012 | SKIN-7013 | SKIN-7014 |



OPTIONAL EXTRAS FOR THE DOUBLE-SIDED SHARKFIN FLYING BANNERS



DISPLAY-7000

LEGEND FLYING BANNER GROUND SPIKE
ground spike: steel



DISPLAY-7050

LEGEND FLYING BANNER 20L SQUARE WATER BASE
base: PP, refill with 20L water, collapsible



DISPLAY-7051

LEGEND FLYING BANNER SCISSOR BASE
base: steel, size: 60 x 60cm



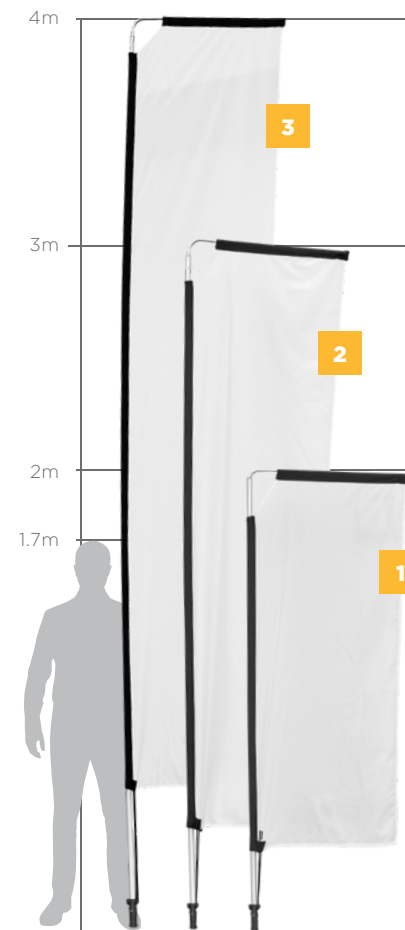


ANNEMI. PLS ADD THE GROUND SPIKE TO THE BOTTOM OF THE BANNERS SO THEY LOOK LIKE THEY'RE STUCK IN THE GRASS. /VOLUMES/PHOTO-IN-PROG/DISPLAY/SHUTTERSTOCK/HIGH

RES/REALTY_2.JPG
BANNERS:
DISPLAY-7044_01.PSD

TELESCOPIC FLYING BANNERS

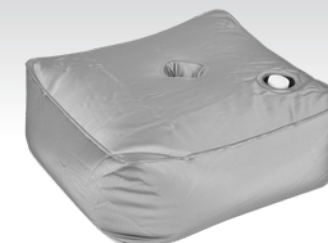
| | DISPLAY-7042 | DISPLAY-7043 | DISPLAY-7044 |
|--|---|------------------------------|------------------------------|
| | Sold in sets of 2, info below is per unit | | |
| Weight | 1.8kg | 2.7kg | 3.5kg |
| Hardware | 2 x poles & 1 arm: aluminium | 3 x poles & 1 arm: aluminium | 4 x poles & 1 arm: aluminium |
| Frame assembled size | 2m | 3m | 4m |
| Accessories | 1 x ground spike: steel | 1 x ground spike: steel | 1 x ground spike: steel |
| Bag material | Polyester oxford | Polyester oxford | Polyester oxford |
| Bag size | 137 x 18cm | 137 x 18cm | 137 x 18cm |
| Skin included | 1 x banner skin | 1 x banner skin | 1 x banner skin |
| Material | Polyester warp knit | Polyester warp knit | Polyester warp knit |
| Visual size | 0.7 x 1.8m | 0.7 x 2.5m | 0.7 x 3.5m |
| Features | Anti-fray | Anti-fray | Anti-fray |
| Branding | Single-sided sublimation | Single-sided sublimation | Single-sided sublimation |
| Range | ★★ LEGEND RANGE | ★★ LEGEND RANGE | ★★ LEGEND RANGE |
| Refresh the banner for multiple campaigns by buying a new skin (SOLD IN SETS OF 2) | | | |
| Reskin Code | SKIN-7042 | SKIN-7043 | SKIN-7044 |



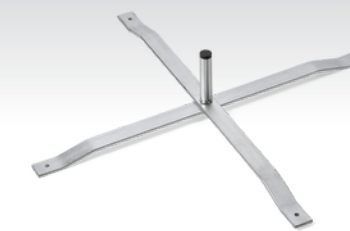
OPTIONAL EXTRAS FOR THE TELESCOPIC FLYING BANNERS



DISPLAY-7000
LEGEND FLYING BANNER GROUND SPIKE
ground spike: steel



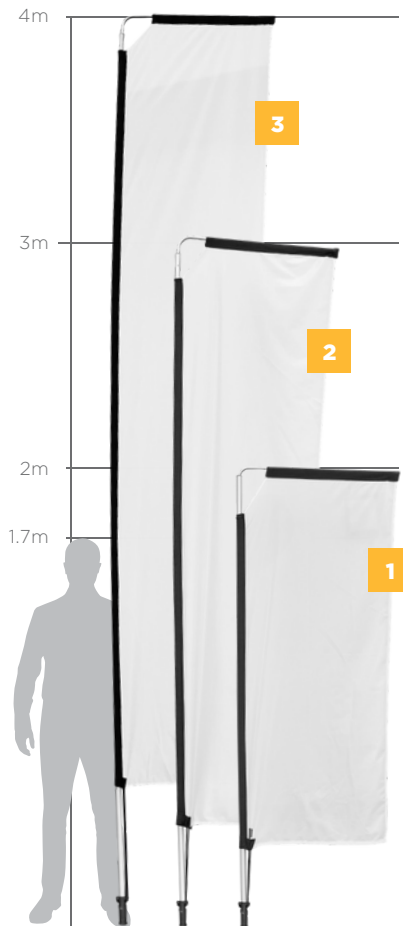
DISPLAY-7050
LEGEND FLYING BANNER 20L SQUARE WATER BASE
base: PP, refill with 20L water, collapsible



DISPLAY-7051
LEGEND FLYING BANNER SCISSOR BASE
base: steel, size: 60 x 60cm

DOUBLE-SIDED TELESCOPIC FLYING BANNERS

| | DISPLAY-7052 | DISPLAY-7053 | DISPLAY-7054 |
|--|--------------------------------|--------------------------------|--------------------------------|
| Weight | 2.1kg | 2.4kg | 4kg |
| Hardware | 2 x poles & 1 arm: aluminium | 3 x poles & 1 arm: aluminium | 4 x poles & 1 arm: aluminium |
| Frame assembled size | 2m | 3m | 4m |
| Accessories | 1 x ground spike: steel | 1 x ground spike: steel | 1 x ground spike: steel |
| Bag material | Polyester oxford | Polyester oxford | Polyester oxford |
| Bag size | 137 x 18cm | 137 x 18cm | 137 x 18cm |
| Skin included | 1 x banner skin | 1 x banner skin | 1 x banner skin |
| Material | Polyester warp knit | Polyester warp knit | Polyester warp knit |
| Visual size | 0.7 x 1.8m | 0.7 x 2.5m | 0.7 x 3.5m |
| Features | Anti-fray | Anti-fray | Anti-fray |
| Branding | Double-sided sublimation | Double-sided sublimation | Double-sided sublimation |
| Range | ★★ LEGEND RANGE | ★★ LEGEND RANGE | ★★ LEGEND RANGE |
| Refresh the banner for multiple campaigns by buying a new skin | | | |
| Reskin Code | SKIN-7052 | SKIN-7053 | SKIN-7054 |

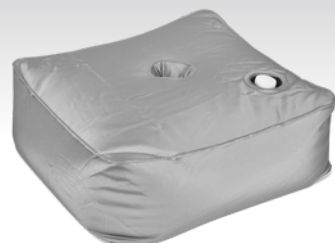


OPTIONAL EXTRAS FOR THE DOUBLE-SIDED TELESCOPIC FLYING BANNERS



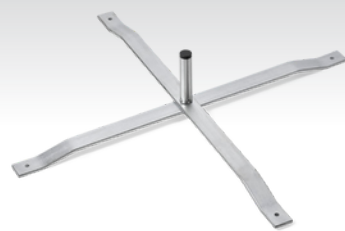
DISPLAY-7000

LEGEND FLYING BANNER GROUND SPIKE
ground spike: steel



DISPLAY-7050

LEGEND FLYING BANNER 20L SQUARE WATER BASE
base: PP, refill with 20L water, collapsible



DISPLAY-7051

LEGEND FLYING BANNER SCISSOR BASE
base: steel, size: 60 x 60cm





SUBLIMATED PARASOLS

Create an inviting environment and overshadow your competition with our range of Parasols.

Ideal for restaurants, hotel courtyards, retail outlets and outdoor seating areas.

Our Parasols are manufactured with a sturdy aluminium frame and recycled plastic components to provide you with a high quality, corrosion resistant display solution.



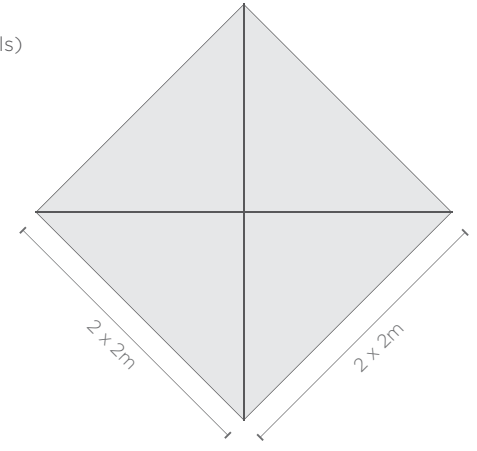
DISPLAY-9000
 Weight: 6.3kg
 Hardware: 1 x pole: aluminium, PP & steel, assembled size: 2 x 2m
 Slip cover: polyester oxford, 177 x 34cm
 Material: 1 x roof skin, gazebo display fabric, water-resistant
 Visual size: 2 x 2m
 Branding: single-sided sublimation

Refresh the parasol for multiple campaigns by buying a new skin
 Reskin code: SKIN-9000

★★
LEGEND
 RANGE

Parasol slip cover, also sold individually as DISBAG-9000

Base sold separately (see opposite page for details)



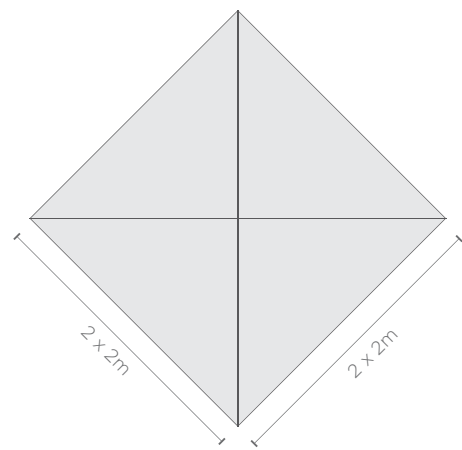
Parasol slip cover, also sold individually as DISBAG-9000

PARASOL BASE

DISPLAY-9005
 Weight: 6kg
 Hardware: 1 x pole: aluminium, PP & steel, assembled size: 2 x 2m
 2m sliding pole, collapsible to 1.5m
 Slip cover: polyester oxford, 177 x 34cm
 Material: 1 x roof skin, gazebo display fabric, water-resistant
 Visual size: 2 x 2m
 Branding: single-sided sublimation

Refresh the parasol for multiple campaigns by buying a new skin
 Reskin code: SKIN-9000

★★
LEGEND
 RANGE



DISPLAY-9001
 PARASOL CONCRETE BASE
 Weight: 28.75kg
 Material: concrete & steel

Base sold separately and fits all 3 parasols:
 DISPLAY-9000, DISPLAY-9005, DISPLAY-9010





2.2m x 2.2m



centre hub with locking pin



reinforced pocket to accommodate for aluminium arm

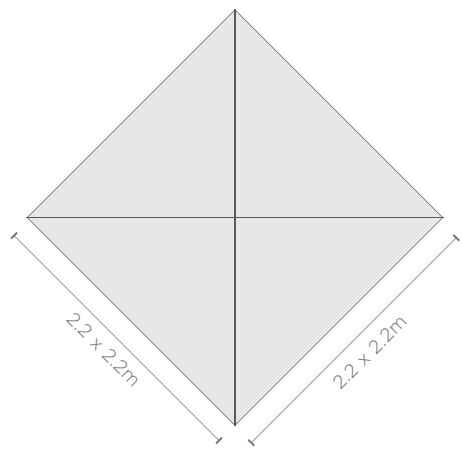


Parasol slip cover, also sold individually as DISBAG-9000

DISPLAY-9010

Weight: 7.12kg
 Hardware: 1 x pole: aluminium, PP & steel, assembled size: 2.2 x 2.2m
 Slip cover: polyester oxford, 177 x 34cm
 Material: 1 x roof skin, gazebo display fabric, water-resistant
 Visual size: 2.2 x 2.2m
 Branding: single-sided sublimation

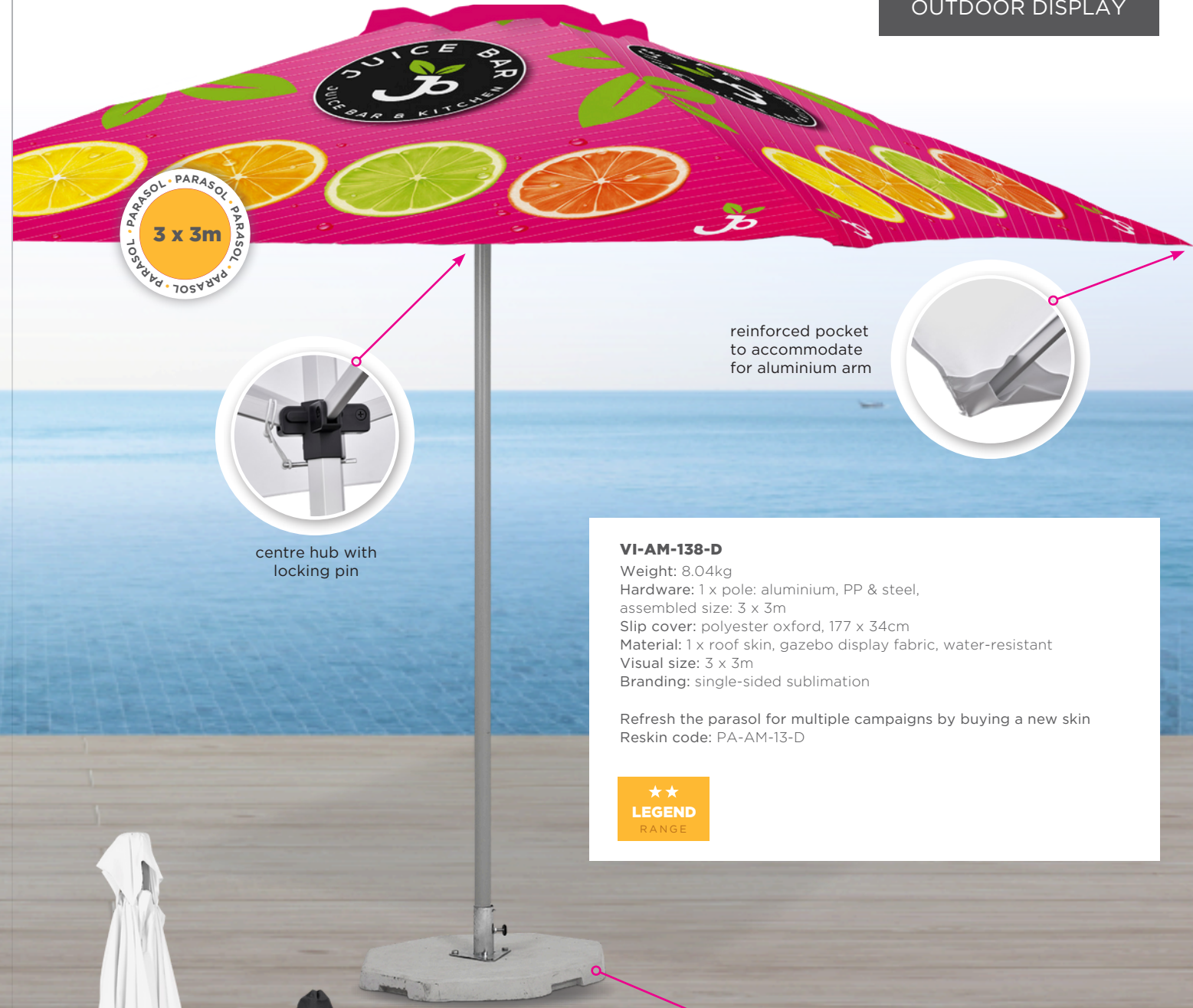
Refresh the parasol for multiple campaigns by buying a new skin
 Reskin code: SKIN-9010



PARASOL BASE

DISPLAY-9001
 PARASOL CONCRETE BASE
 Weight: 28.75kg
 Material: concrete & steel

Base sold separately and fits all 3 parasols:
 DISPLAY-9000, DISPLAY-9005, DISPLAY-9010



3 x 3m



centre hub with locking pin



reinforced pocket to accommodate for aluminium arm

VI-AM-138-D

Weight: 8.04kg
 Hardware: 1 x pole: aluminium, PP & steel, assembled size: 3 x 3m
 Slip cover: polyester oxford, 177 x 34cm
 Material: 1 x roof skin, gazebo display fabric, water-resistant
 Visual size: 3 x 3m
 Branding: single-sided sublimation

Refresh the parasol for multiple campaigns by buying a new skin
 Reskin code: PA-AM-13-D



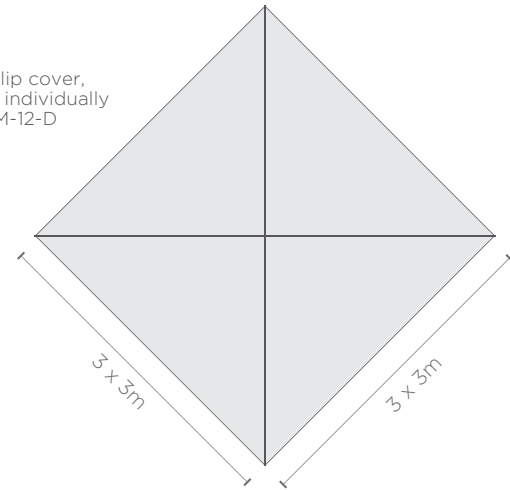
Parasol slip cover, also sold individually as PA-AM-12-D

PARASOL BASE PARASOL BASE

PA-AM-16-D

PARASOL CONCRETE BASE
 Weight: 50.00kg
 Material: concrete & steel

Base sold separately and fits:
 VI-AM-137-D, VI-AM-138-D



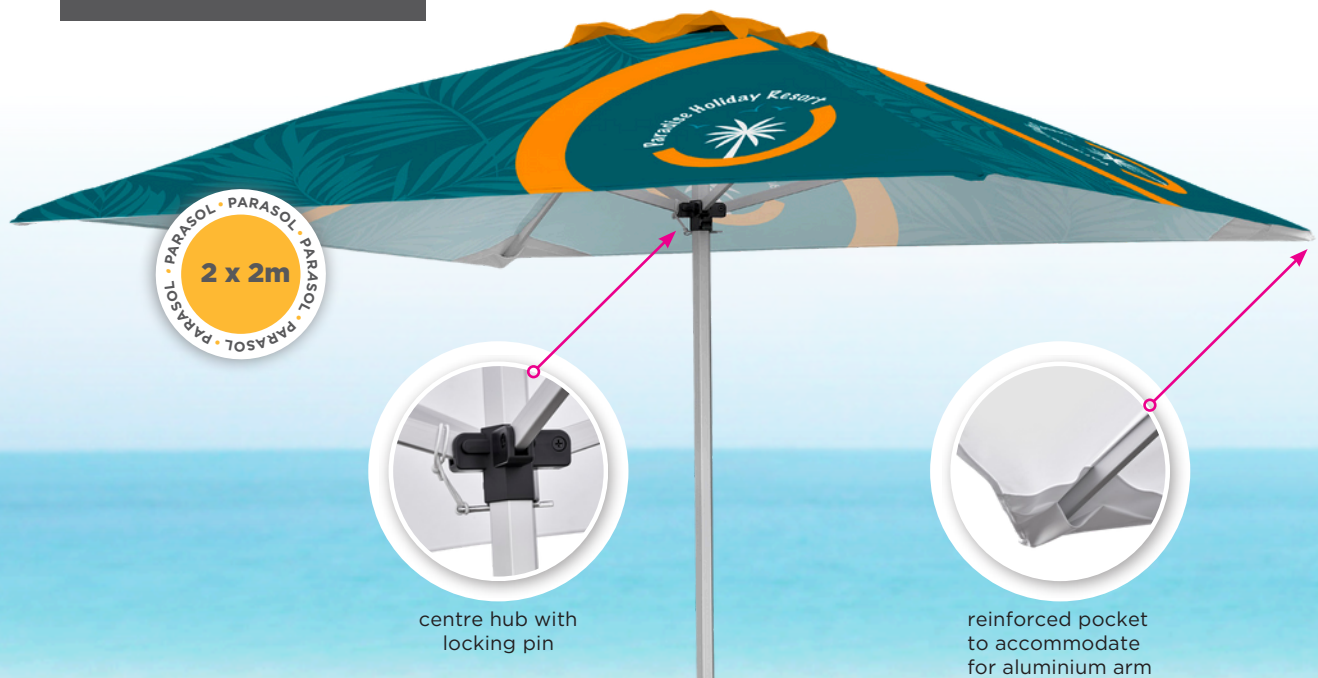


FADE RESISTANT PARASOLES

Our Fade Resistant Displays are printed with state-of-the-art Latex Gen-4 inks, boasting the widest colour gamut on the market. This allows us to print the widest range of colours within the colour spectrum and produce the most vibrant and vivid print results.

The inks have a low environmental impact, are UV stable and scratch resistant, providing great durability for long-term outdoor exposure.

Premium polyester fabric with a unique print-guard coating is used for all of our Fade Resistant Parasoles.



2 x 2m



centre hub with locking pin



reinforced pocket to accommodate for aluminium arm

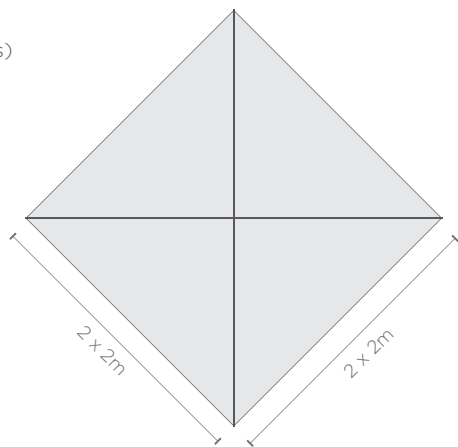
VI-AM-139-D

Weight: 6.3kg
 Hardware: 1 x pole: aluminium, PP & steel, assembled size: 2 x 2m
 Slip cover: polyester oxford, 177 x 34cm
 Material: print-guard polyester, water resistant
 Visual size: 2 x 2m
 Branding: latex gen-4 printing

Refresh the parasol for multiple campaigns by buying a new skin
 Reskin code: PA-AM-14-D



Base sold separately (see opposite page for details)



Parasol slip cover, also sold individually as DISBAG-9000



2 x 2m



centre hub with locking pin



2m sliding pole with quick release lock, collapsible to 1.5m high

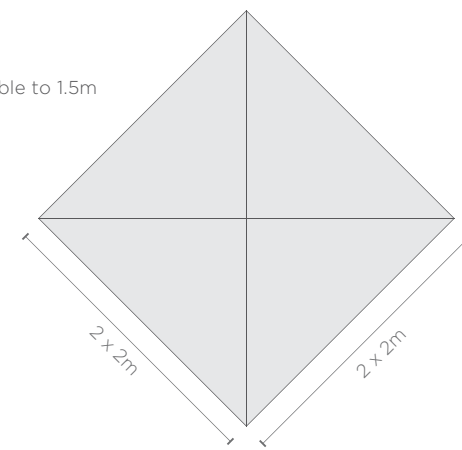
Parasol slip cover, also sold individually as DISBAG-9000



VI-AM-140-D

Weight: 6kg
 Hardware: 1 x pole: aluminium, PP & steel, assembled size: 2 x 2m, 2m sliding pole, collapsible to 1.5m
 Slip cover: polyester oxford, 177 x 34cm
 Material: print-guard polyester, water resistant
 Visual size: 2 x 2m
 Branding: latex gen-4 printing

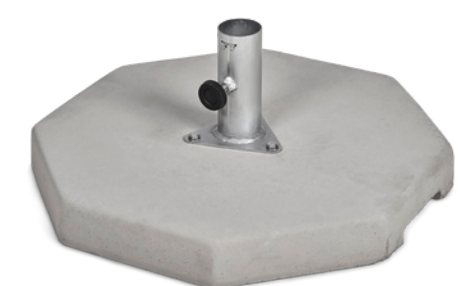
Refresh the parasol for multiple campaigns by buying a new skin
 Reskin code: PA-AM-14-D



PARASOL BASE

DISPLAY-9001
 PARASOL CONCRETE BASE
 Weight: 28.75kg
 Material: concrete & steel

Base sold separately and fits all 3 parasols:
 VI-AM-139-D, VI-AM-140-D, VI-AM-141-D





2.2m x 2.2m



centre hub with locking pin



reinforced pocket to accommodate for aluminium arm

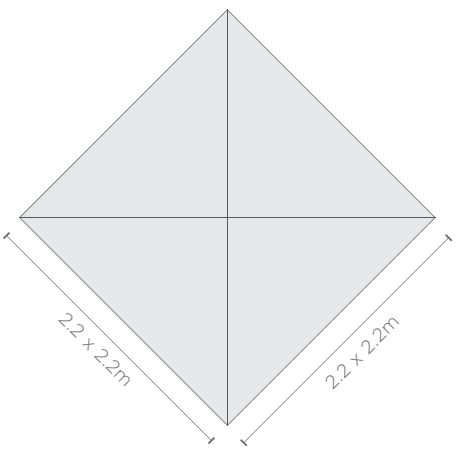


Parasol slip cover, also sold individually as DISBAG-9000

PARASOL BASE

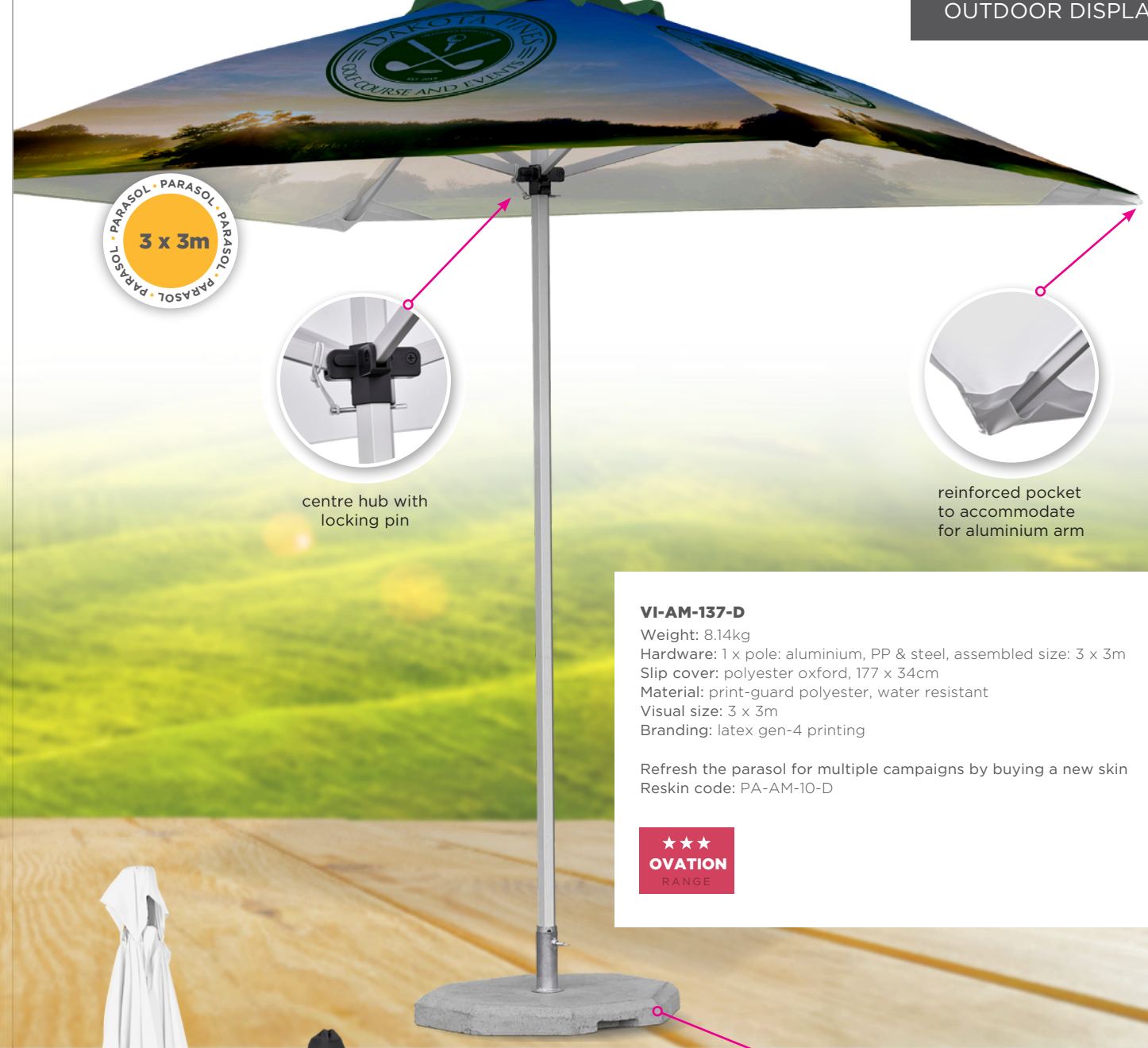
DISPLAY-9001
 PARASOL CONCRETE BASE
 Weight: 28.75kg
 Material: concrete & steel

Base sold separately and fits all 3 parasols:
 VI-AM-139-D, VI-AM-140-D, VI-AM-141-D



VI-AM-141-D
 Weight: 7.12kg
 Hardware: 1 x pole: aluminium, PP & steel, assembled size: 2.2 x 2.2m
 Slip cover: polyester oxford, 177 x 34cm
 Material: print-guard polyester, water resistant
 Visual size: 2.2 x 2.2m
 Branding: latex gen-4 printing

Refresh the parasol for multiple campaigns by buying a new skin
 Reskin code: PA-AM-15-D



3 x 3m



centre hub with locking pin



reinforced pocket to accommodate for aluminium arm



Parasol slip cover, also sold individually as PA-AM-12-D

VI-AM-137-D
 Weight: 8.14kg
 Hardware: 1 x pole: aluminium, PP & steel, assembled size: 3 x 3m
 Slip cover: polyester oxford, 177 x 34cm
 Material: print-guard polyester, water resistant
 Visual size: 3 x 3m
 Branding: latex gen-4 printing

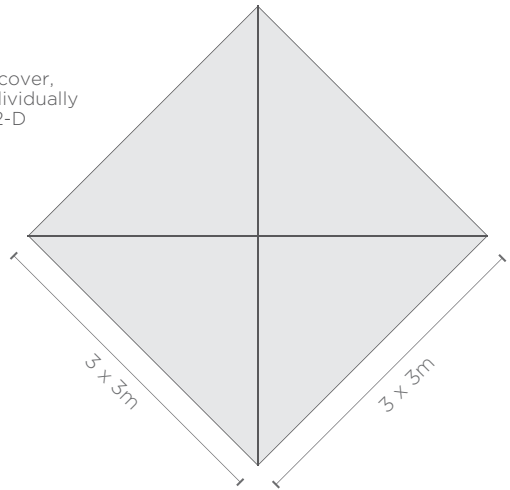
Refresh the parasol for multiple campaigns by buying a new skin
 Reskin code: PA-AM-10-D



PARASOL BASE

PA-AM-16-D
 PARASOL CONCRETE BASE
 Weight: 50.00kg
 Material: concrete & steel

Base sold separately and fits:
 VI-AM-137-D, VI-AM-138-D





SUBLIMATED GAZEBO

Gazebos are suitable for brand activations, product launches, markets, sporting events, marathons, schools, festivals, golf days and so much more.

All of our Gazebos fall within the Ovation family - defined by premium quality construction and durability, at an extremely competitive price point.

Available in a range of popular sizes our standard Gazebos include the following components:

- 1 x durable and lightweight aluminium frame
- 1 x water-resistant polyester roof
- 1 x polyester carry bag for portability and convenient storage.

CUSTOMISE YOUR GAZEBO

Half and Full Wall Skins are available for all of the Gazebos in this range - allowing you to customise and configure your Gazebo to suit your requirements and maximise your brand exposure. The wall skins easily attach to the structure, making this display solution ideal for interchangeable artwork - offering a great ROI for your business.

The wall skins are branded on one side only, using our state-of-the-art sublimation branding process to produce vibrant results.



SUBLIMATED GAZEBO 1 X 1M KIOSK

SPECIFICATIONS

Weight: 11kg
 Hardware: 1 x frame: aluminium, assembled size: 1 x 1m, quick assembly, portable
 Table: ABS top with aluminium supports 100 x 29 x 3cm
 Bag included: polyester oxford, size: 123 x 18 x 18cm
 Fabric: gazebo display fabric, fitted 600D water head, water resistant
 Branding: single-sided sublimation
 Half wall visual size: 1 x 1m
 Full wall visual size: 1 x 1.9m

★★
LEGEND
 RANGE

| WALL CONFIGURATION | DISPLAY CODE |
|---|--------------|
| No walls | DISPLAY-2000 |
| 1 x half wall skin | DISPLAY-2002 |
| 3 x half wall skins | DISPLAY-2004 |
| 3 x half wall skins, 1 x full wall skin | DISPLAY-2006 |

| Refresh the gazebo for multiple campaigns by buying a new skin | |
|--|-----------|
| Roof Reskin Code | SKIN-2000 |
| Full Wall Reskin Code | SKIN-2002 |
| Half Wall Reskin Code | SKIN-2004 |

The compact design and flat roof structure makes this gazebo perfect for indoor and outdoor activations that require quick setups and lend themselves to promotions and brand activations in forecourts and other small areas.



4 attached loops for additional stability, used to secure gazebo with ground pegs and ropes (not included) see TOOLKIT-2000



Mobile kiosk includes ABS tabletop with aluminium supports



Aluminium hexagonal leg profile for superior strength & pre-punched feet to easily secure gazebo with ground pegs



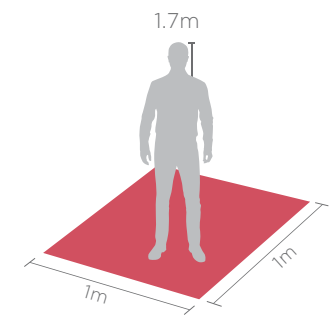
Collapsible gazebo fits easily into carry bag



Carry bag included



GAZEBO FOOTPRINT



Images shown are for DISPLAY-2004

Branding is visible on one side only, walls can face inwards (A) or outwards (B)

SUBLIMATED GAZEBO 1.5 X 1.5M KIOSK

SPECIFICATIONS

Weight: 8kg
 Hardware: 1 x frame: aluminium, assembled size: 1.5 x 1.5m, quick assembly, portable
 Bag included: polyester oxford, size: 156 x 23 x 21cm, webbing handles
 Toolkit included: 1 x mallet: rubber & wood, 4 x ropes: nylon, 4 x frame pegs: steel, 4 x rope pegs: steel
 Fabric: gazebo display fabric, fitted 600D water head, water resistant
 Branding: single-sided sublimation
 Half wall visual size: 1.5 x 1m
 Full wall visual size: 1.5 x 1.9m



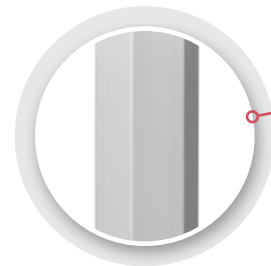
| WALL CONFIGURATION | DISPLAY CODE |
|---|--------------|
| No walls 1 x full wall skin 2 x full | DISPLAY-2020 |
| wall skins 3 x full wall skins 1 x | DISPLAY-2022 |
| half wall skin 2 x half wall skins 3 | DISPLAY-2024 |
| x half wall skins 4 x half wall | DISPLAY-2026 |
| skins 1 x half wall skin, 1 x full wall | DISPLAY-2028 |
| skin 2 x half wall skins, 1 x full | DISPLAY-2030 |
| wall skin 3 x half wall skins, 1 x | DISPLAY-2032 |
| full wall skin | DISPLAY-2034 |
| | DISPLAY-2035 |
| | DISPLAY-2036 |
| | DISPLAY-2038 |

| Refresh the gazebo for multiple campaigns by buying a new skin | |
|--|-----------|
| Roof Reskin Code | SKIN-2020 |
| Full Wall Reskin Code | SKIN-2022 |
| Half Wall Reskin Code | SKIN-2024 |

The compact design and flat roof structure makes this gazebo perfect for indoor and outdoor activations that require quick setups and lend themselves to promotions and brand activations in forecourts and other small areas.



4 attached loops for additional stability, used to secure gazebo with ground pegs and ropes



Aluminium hexagonal leg profile for superior strength

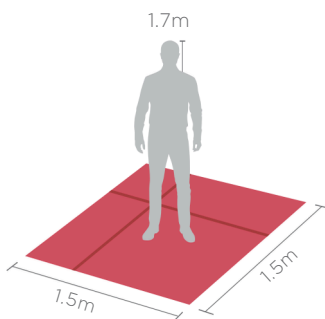


Pre-punched feet to easily secure gazebo with ground pegs



Branding is visible on one side only, walls can face inwards (A) or outwards (B) Images shown are for DISPLAY-2036

GAZEBO FOOTPRINT



Collapsible gazebo fits easily into carry bag



Carry bag included
(ALSO SOLD INDIVIDUALLY AS DISBAG-2020)



Toolkit included: 1 x mallet, 4 x ropes, 4 x frame pegs, 4 x rope pegs
(ALSO SOLD INDIVIDUALLY AS TOOLKIT-2000)

SUBLIMATED GAZEBO
2 X 2M

SPECIFICATIONS

Weight: 14kg
 Hardware: 1 x frame: aluminium, assembled size: 2 x 2m, quick assembly, portable
 Slip over bag included: polyester oxford, size: 158 x 28 x 28cm, webbing handles
 Toolkit included: 1 x mallet: rubber & wood, 4 x ropes: nylon, 4 x frame pegs: steel, 4 x rope pegs: steel
 Fabric: gazebo display fabric, fitted 600D water head, water resistant
 Branding: single-sided sublimation
 Half wall visual size: 2 x 1m
 Full wall visual size: 2 x 1.9m



| WALL CONFIGURATION | DISPLAY CODE |
|---|--------------|
| No walls 1 x full wall skin 2 x full | DISPLAY-2040 |
| wall skins 3 x full wall skins 1 x | DISPLAY-2042 |
| half wall skin 2 x half wall skins 3 | DISPLAY-2044 |
| x half wall skins 4 x half wall | DISPLAY-2045 |
| skins 1 x full wall skin, 1 x half wall | DISPLAY-2046 |
| skin 1 x full wall skin, 2 x half wall | DISPLAY-2048 |
| skins 1 x full wall skin, 3 x half | DISPLAY-2050 |
| wall skins | DISPLAY-2052 |
| | DISPLAY-2054 |
| | DISPLAY-2056 |
| | DISPLAY-2058 |

| Refresh the gazebo for multiple campaigns by buying a new skin | |
|--|-----------|
| Roof Reskin Code | SKIN-2040 |
| Full Wall Reskin Code | SKIN-2042 |
| Half Wall Reskin Code | SKIN-2044 |



Toolkit included: 1 x mallet, 4 x ropes, 4 x frame pegs, 4 x rope pegs
 (ALSO SOLD INDIVIDUALLY AS TOOLKIT-2000)



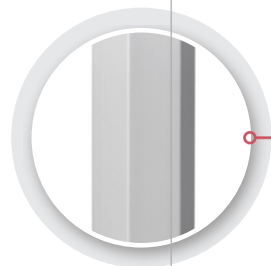
Slip over bag included
 (ALSO SOLD INDIVIDUALLY AS DISBAG-2040)

BAG ON WHEELS FOR 2m GAZEBO
 SOLD INDIVIDUALLY AS DISPLAY-2001

Pitched roof gazebo, perfect for outdoor events and activations where a smaller footprint is required.



4 attached loops for additional stability, used to secure gazebo with ground pegs and ropes



Aluminium hexagonal leg profile for superior strength



Pre-punched feet to easily secure gazebo with ground pegs

GAZEBO FOOTPRINT

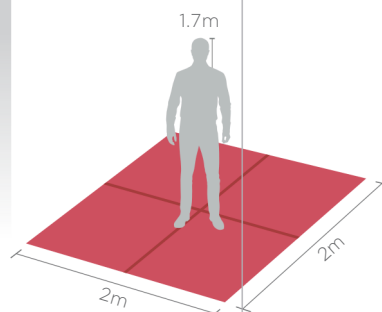


Image shown is for DISPLAY-2052

Branding is visible on one side only, walls can face inwards or outwards

SUBLIMATED GAZEBO
2 X 2M - PETITE FRAME

SPECIFICATIONS

Weight: 13kg
 Hardware: 1 x frame: aluminium, assembled size: 2 x 2m, quick assembly, portable, compact
 Slip over bag included: polyester oxford, size: 122 x 28 x 28cm, webbing handles
 Toolkit included: 1 x mallet: rubber & wood, 4 x ropes: nylon, 4 x frame pegs: steel, 4 x rope pegs: steel
 Fabric: gazebo display fabric, fitted 600D water head, water resistant
 Branding: single-sided sublimation
 Half wall visual size: 2 x 1m
 Full wall visual size: 2 x 1.85m



| WALL CONFIGURATION | DISPLAY CODE |
|---|--------------|
| No walls | DISPLAY-2140 |
| 1 x full wall skin | DISPLAY-2142 |
| 2 x full wall skins | DISPLAY-2144 |
| 3 x full wall skins | DISPLAY-2145 |
| 1 x half wall skin | DISPLAY-2146 |
| 2 x half wall skins | DISPLAY-2148 |
| 3 x half wall skins | DISPLAY-2150 |
| 4 x half wall skins | DISPLAY-2152 |
| 1 x half wall skin, 1 x full wall skin | DISPLAY-2154 |
| 2 x half wall skins, 1 x full wall skin | DISPLAY-2156 |
| 3 x half wall skins, 1 x full wall skin | DISPLAY-2158 |

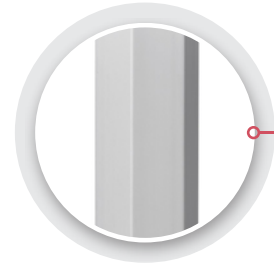
Refresh the gazebo for multiple campaigns by buying a new skin

| | |
|-----------------------|-----------|
| Roof Reskin Code | SKIN-2040 |
| Full Wall Reskin Code | SKIN-2140 |
| Half Wall Reskin Code | SKIN-2044 |

This gazebo is perfect for brand activations, product launches, sporting events and mobile retail shops to mention a few. The Petite Gazebo features extra collapsible legs that slide in making it compact and portable allowing for easy transportation.



4 attached loops for additional stability, used to secure gazebo with ground pegs and ropes



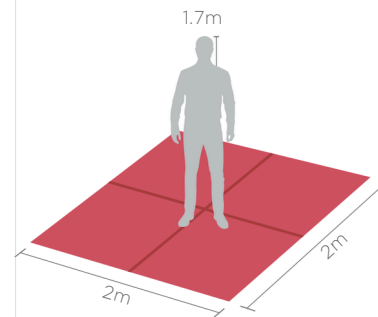
Aluminium hexagonal leg profile for superior strength



Pre-punched feet to easily secure gazebo with ground pegs



GAZEBO FOOTPRINT



Collapsible gazebo fits easily into carry bag



Slip over bag included
(ALSO SOLD INDIVIDUALLY AS DISBAG-2140)



Toolkit included: 1 x mallet, 4 x ropes, 4 x frame pegs, 4 x rope pegs
(ALSO SOLD INDIVIDUALLY AS TOOLKIT-2000)

Image shown is for DISPLAY-2156

Branding is visible on one side only, walls can face inwards or outwards

SUBLIMATED GAZEBO
3 X 3M

SPECIFICATIONS

Weight: 19kg
 Hardware: 1 x frame: aluminium, assembled size: 3 x 3m, quick assembly, portable
 Slip over bag included: polyester oxford, size: 158 x 28 x 28cm, webbing handles
 Toolkit Included: 1 x mallet: rubber & wood, 4 x ropes: nylon, 4 x frame pegs: steel, 4 x rope pegs: steel
 Fabric: gazebo display fabric, fitted 600D water head, water resistant
 Branding: single-sided sublimation
 Half wall visual size: 3 x 1m
 Full wall visual size: 3 x 1.9m

★★
LEGEND
 RANGE

| WALL CONFIGURATION | DISPLAY CODE |
|---|--------------|
| No walls | DISPLAY-2060 |
| 1 x full wall skin | DISPLAY-2062 |
| 2 x full wall skins | DISPLAY-2064 |
| 3 x full wall skins | DISPLAY-2065 |
| 1 x half wall skin | DISPLAY-2066 |
| 2 x half wall skins | DISPLAY-2068 |
| 3 x half wall skins | DISPLAY-2070 |
| 4 x half wall skins | DISPLAY-2072 |
| 1 x half wall skin, 1 x full wall skin | DISPLAY-2074 |
| 2 x half wall skins, 1 x full wall skin | DISPLAY-2076 |
| 3 x half wall skins, 1 x full wall skin | DISPLAY-2078 |

Refresh the gazebo for multiple campaigns by buying a new skin

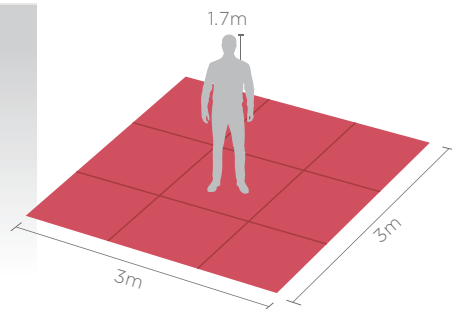
| | |
|-----------------------|-----------|
| Roof Reskin Code | SKIN-2060 |
| Full Wall Reskin Code | SKIN-2062 |
| Half Wall Reskin Code | SKIN-2064 |

With a slightly bigger footprint, this gazebo size is ideal for brand activations, product launches, sporting events and mobile retail to mention a few.



Image shown is for DISPLAY-2065 Branding is visible on one side only, walls can face inwards or outwards

GAZEBO FOOTPRINT



Collapsible gazebo fits easily into carry bag



Slip over bag included (ALSO SOLD INDIVIDUALLY AS DISBAG-2040)



Toolkit included: 1 x mallet, 4 x ropes, 4 x frame pegs, 4 x rope pegs

(ALSO SOLD INDIVIDUALLY AS TOOLKIT-2000)



BAG ON WHEELS FOR 3m GAZEBO SOLD INDIVIDUALLY AS DISPLAY-2001

SUBLIMATED GAZEBO
4.5 X 3M

SPECIFICATIONS

Weight: 25kg
 Hardware: 1 x frame: aluminium, assembled size: 4.5 x 3m, quick assembly, portable
 Slip over bag included: polyester oxford, size: 158 x 29 x 31cm, webbing handles
 Toolkit included: 1 x mallet: rubber & wood, 4 x ropes: nylon, 4 x frame pegs: steel, 4 x rope pegs: steel
 Fabric: gazebo display fabric, fitted 600D water head, water resistant
 Branding: single-sided sublimation
 Short half wall visual size: 3 x 1m
 Long full wall visual size: 4.5 x 1.9m
 Short full wall visual size: 3 x 1.9m

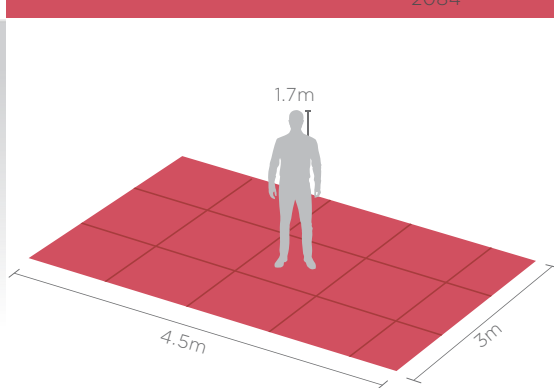


| WALL CONFIGURATION | DISPLAY CODE |
|--|--------------|
| No walls | DISPLAY-2080 |
| 1 x long full wall skin | DISPLAY-2082 |
| 2 x long full wall skins | DISPLAY-2084 |
| 1 x long full wall skin, 1 x short full wall skin | DISPLAY-2085 |
| 1 x long full wall skin, 2 x short half wall skins | DISPLAY-2086 |
| 1 x short full wall skin | DISPLAY-2088 |
| 2 x short full wall skins | DISPLAY-2090 |
| 2 x short half wall skins | DISPLAY-2092 |
| 1 x short half wall skin, 1 x long full wall skin | DISPLAY-2094 |

Refresh the gazebo for multiple campaigns by buying a new skin

| | |
|-----------------------------|-------|
| Roof Reskin Code | SKIN- |
| Long Full Wall Reskin Code | 2080 |
| Short Full Wall Reskin Code | SKIN- |
| Short Half Wall Reskin Code | 2082 |
| | SKIN- |
| | 2085 |

GAZEBO FOOTPRINT



This gazebo has a slightly bigger footprint, accommodating for extra retail or display space. Perfectly fits 2 trestle tables under roof and big enough to fit 1 vehicle. That extra space might come in handy depending on the activation, product launch or event at hand.



4 attached loops for additional stability, used to secure gazebo with ground pegs and ropes



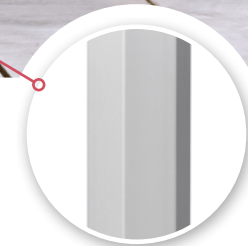
Collapsible gazebo fits easily into carry bag



Slip over bag included (ALSO SOLD INDIVIDUALLY AS DISBAG-2080)

Toolkit included: 1 x mallet, 4 x ropes, 4 x frame pegs, 4 x rope pegs

(ALSO SOLD INDIVIDUALLY AS TOOLKIT-2000)



Aluminium hexagonal leg profile for superior strength



Pre-punched feet to easily secure gazebo with ground pegs

Image shown is for DISPLAY-2085. Branding is visible on one side only, walls can face inwards or outwards

SOUBALTIMONA TGEADZE
6 X 3M

SPECIFICATIONS

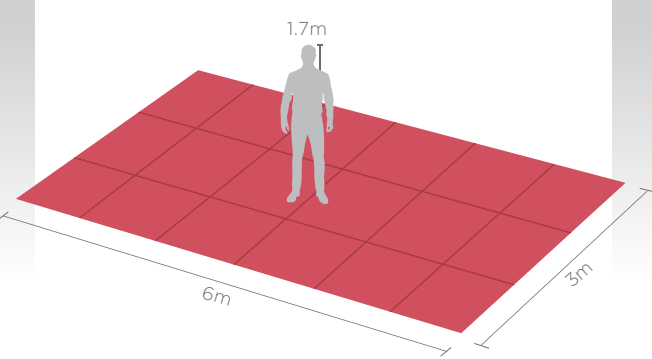
Weight: 32kg
 Hardware: 1 x frame: aluminium, assembled size: 6 x 3m, quick assembly, portable
 Bag included: polyester oxford, size: 158 x 28 x 43cm, webbing handles
 Toolkit Included: 1 x mallet: rubber & wood, 6 x ropes: nylon, 6 x frame pegs: steel, 4 x rope pegs: steel
 Fabric: gazebo display fabric, fitted 600D water head, water resistant
 Branding: single-sided sublimation
 Short half wall visual size: 3 x 1m
 Long full wall visual size: 6 x 1.9m
 Short full wall visual size: 3 x 1.9m



| WALL CONFIGURATION | DISPLAY CODE |
|--|--------------|
| No walls | DISPLAY- |
| 1 x long full wall skin | 2010 |
| 2 x long full wall skins | DISPLAY-2011 |
| 1 x long full wall skin, 1 x short full wall skin | DISPLAY- |
| 1 x long full wall skin, 2 x short half wall skins | 2012 |
| 1 x short full wall skin | DISPLAY- |
| 2 x short full wall skins | 2013 |
| 2 x short half wall skins | DISPLAY- |
| 1 x short half wall skin, 1 x long full wall skin | 2014 |
| | DISPLAY- |

| Refresh the gazebo for multiple campaigns by buying a new skin | |
|--|-----------------------|
| Roof Reskin Code | 2015 DISPLAY- |
| Long Full Wall Reskin Code | 2010-2012 DISPLAY- |
| Short Full Wall Reskin Code | 2011-2015 DISPLAY- |
| Short Half Wall Reskin Code | 2014 DISPLAY- |

GAZEBO FOOTPRINT



From outdoor events to corporate functions, this lightweight gazebo is the perfect display solution. It is fully collapsible and easy to setup, not mention fully customisable in terms of the number of walls and branding options. Branded Gazebos are a popular and affordable means of advertising.



4 attached loops for additional stability, used to secure gazebo with ground pegs and ropes

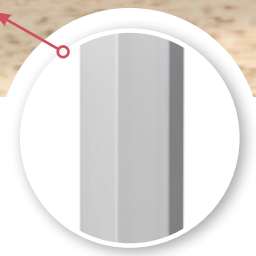


Collapsible gazebo fits easily into carry bag



Slip over bag included
 (ALSO SOLD INDIVIDUALLY AS DISBAG-2010)

Toolkit included:
 1 x mallet, 6 x ropes,
 6 x frame pegs, 6 x rope pegs
 (ALSO SOLD INDIVIDUALLY AS TOOLKIT-2010)



Aluminium hexagonal leg profile for superior strength



Pre-punched feet to easily secure gazebo with ground pegs

Image shown is for DISPLAY-2011
 Branding is visible on one side only, walls can face inwards or outwards



FADE RESISTANT GAZEBO

Our Fade Resistant Displays are printed with state-of-the-art Latex Gen-4 inks, boasting the widest colour gamut on the market.

This allows us to print the widest range of colours within the colour spectrum and produce the most vibrant and vivid print results.

The inks have a low environmental impact, are UV stable and scratch resistant, providing great durability for long-term outdoor exposure.

Premium polyester fabric with a unique print-guard coating is used for all of our Fade Resistant Gazebos.



FADE RESISTANT GAZEBO 1 X 1M KIOSK

SPECIFICATIONS

Weight: 11kg
 Hardware: 1 x frame: aluminium, assembled size: 1 x 1m, quick assembly, portable
 Table: ABS top with aluminium supports 100 x 29 x 3cm
 Bag included: polyester oxford, size: 123 x 18 x 18cm
 Fabric: print-guard polyester, water resistant
 Branding: single-sided, latex gen-4 printing
 Half wall visual size: 1 x 1m
 Full wall visual size: 1 x 1.9m



| WALL CONFIGURATION | DISPLAY CODE |
|---|--------------|
| No walls | VI-AM-142- |
| 1 x half wall skin | D VI-AM- |
| 3 x half wall skins | 143-D VI- |
| 3 x half wall skins, 1 x full wall skin | AM-144-D |
| | VI-AM-145- |

| Refresh the gazebo for multiple campaigns by buying a new skin | |
|--|------------|
| Roof Reskin Code | GZ-AM-38-D |
| Full Wall Reskin Code | GZ-AM-40-D |
| Half Wall Reskin Code | GZ-AM-39-D |

The compact design and flat roof structure makes this gazebo perfect for indoor and outdoor activations that require quick setups and lend themselves to promotions and brand activations in forecourts and other small areas.



4 attached loops for additional stability, used to secure gazebo with ground pegs and ropes (not included) see TOOLKIT-2000



Mobile kiosk includes ABS tabletop with aluminium supports



Aluminium hexagonal leg profile for superior strength & pre-punched feet to easily secure gazebo with ground pegs

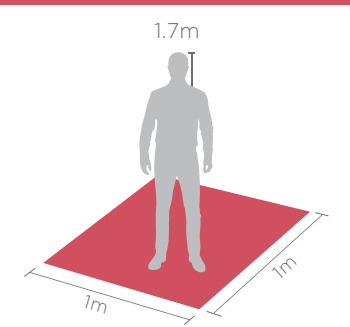


Collapsible gazebo fits easily into carry bag



Carry bag included

GAZEBO FOOTPRINT



Images shown are for VI-AM-144-D

Branding is visible on one side only, walls can face inwards (A) or outwards (B)

FADE RESISTANT GAZEBO 1.5 X 1.5M KIOSK

SPECIFICATIONS

Weight: 8kg
 Hardware: 1 x frame: aluminium, assembled size: 1.5 x 1.5m, quick assembly, portable
 Bag included: polyester oxford, size: 156 x 23 x 21cm, webbing handles
 Toolkit included: 1 x mallet: rubber & wood, 4 x ropes: nylon, 4 x frame pegs: steel, 4 x rope pegs: steel
 Fabric: print-guard polyester, water resistant
 Branding: single-sided, latex gen-4 printing
 Half wall visual size: 1.5 x 1m
 Full wall visual size: 1.5 x 1.9m



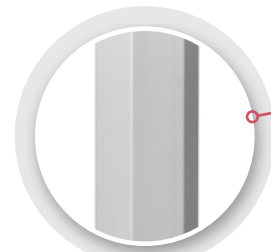
| WALL CONFIGURATION | DISPLAY CODE |
|---|--------------|
| No walls 1 x full wall skin 2 x full | VI-AM-169-D |
| wall skins 3 x full wall skins 1 x | VI-AM-170-D |
| half wall skin 2 x half wall skins 3 | VI-AM-172-D |
| x half wall skins 4 x half wall | VI-AM-174-D |
| skins 1 x half wall skin, 1 x full wall | VI-AM-177-D |
| skin 2 x half wall skins, 1 x full | VI-AM-179-D |
| wall skin 3 x half wall skins, 1 x | VI-AM-184-D |
| full wall skin | VI-AM-186-D |
| | VI-AM-188-D |
| | VI-AM-192-D |
| | VI-AM-193-D |

| Refresh the gazebo for multiple campaigns by buying a new skin | |
|--|-----------|
| Roof Reskin Code | GZ-AM-45- |
| Full Wall Reskin Code | D GZ-AM- |
| Half Wall Reskin Code | 46-D GZ- |
| | AM-47-D |

The compact design and flat roof structure makes this gazebo perfect for indoor and outdoor activations that require quick setups and lend themselves to promotions and brand activations in forecourts and other small areas.



4 attached loops for additional stability, used to secure gazebo with ground pegs and ropes



Aluminium hexagonal leg profile for superior strength

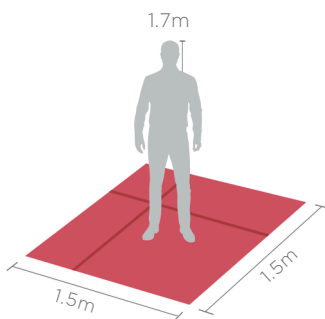


Pre-punched feet to easily secure gazebo with ground pegs



Branding is visible on one side only, walls can face inwards (A) or outwards (B) Images shown are for VI-AM-192-D

GAZEBO FOOTPRINT



Collapsible gazebo fits easily into carry bag



Carry bag included
(ALSO SOLD INDIVIDUALLY AS DISBAG-2020)



Toolkit included: 1 x mallet, 4 x ropes, 4 x frame pegs, 4 x rope pegs
(ALSO SOLD INDIVIDUALLY AS TOOLKIT-2000)

FADE RESISTANT GAZEBO
2 X 2M

SPECIFICATIONS

Weight: 14kg
 Hardware: 1 x frame: aluminium, assembled size: 2 x 2m, quick assembly, portable
 Slip over bag included: polyester oxford, size: 158 x 28 x 28cm, webbing handles
 Toolkit included: 1 x mallet: rubber & wood, 4 x ropes: nylon, 4 x frame pegs: steel, 4 x rope pegs: steel
 Fabric: print-guard polyester, water resistant
 Branding: single-sided, latex gen-4 printing
 Half wall visual size: 2 x 1m
 Full wall visual size: 2 x 1.9m



| WALL CONFIGURATION | DISPLAY CODE |
|---|--------------|
| No walls 1 x full wall skin 2 x full | VI-AM-194-D |
| wall skins 3 x full wall skins 1 x | VI-AM-195-D |
| half wall skin 2 x half wall skins 3 | VI-AM-196-D |
| x half wall skins 4 x half wall | VI-AM-197-D |
| skins 1 x full wall skin, 1 x half wall | VI-AM-198-D |
| skin 1 x full wall skin, 2 x half wall | VI-AM-199-D |
| skins 1 x full wall skin, 3 x half | VI-AM-200-D |
| wall skins | VI-AM-201-D |
| | VI-AM-202-D |
| | VI-AM-203-D |
| | VI-AM-204-D |

| Refresh the gazebo for multiple campaigns by buying a new skin | |
|--|------------|
| Roof Reskin Code | GZ-AM-48-D |
| Full Wall Reskin Code | GZ-AM-49-D |
| Half Wall Reskin Code | GZ-AM-50-D |



Collapsible gazebo fits easily into carry bag



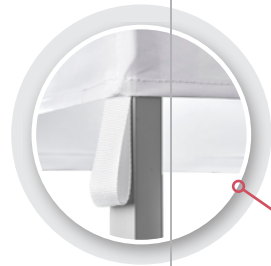
Toolkit included: 1 x mallet, 4 x ropes, 4 x frame pegs, 4 x rope pegs
 (ALSO SOLD INDIVIDUALLY AS TOOLKIT-2000)



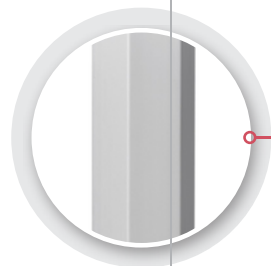
Slip over bag included
 (ALSO SOLD INDIVIDUALLY AS DISBAG-2040)

BAG ON WHEELS FOR 2m GAZEBO
 SOLD INDIVIDUALLY AS DISPLAY-2001

Pitched roof gazebo, perfect for outdoor events and activations where a smaller footprint is required.



4 attached loops for additional stability, used to secure gazebo with ground pegs and ropes



Aluminium hexagonal leg profile for superior strength



Pre-punched feet to easily secure gazebo with ground pegs

GAZEBO FOOTPRINT

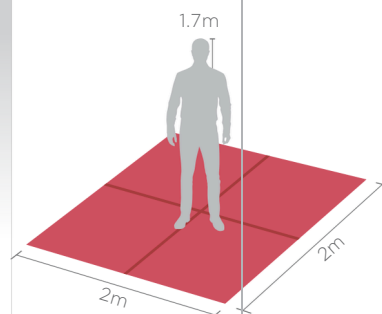


Image shown is for VI-AM-201-D

Branding is visible on one side only, walls can face inwards or outwards

FADE RESISTANT GAZEBO
2 X 2M - PETITE FRAME

SPECIFICATIONS

Weight: 13kg
 Hardware: 1 x frame: aluminium, assembled size: 2 x 2m, quick assembly, portable, compact
 Slip over bag included: polyester oxford, size: 122 x 28 x 28cm, webbing handles
 Toolkit included: 1 x mallet: rubber & wood, 4 x ropes: nylon, 4 x frame pegs: steel, 4 x rope pegs: steel
 Fabric: print-guard polyester, water resistant
 Branding: single-sided, latex gen-4 printing
 Half wall visual size: 2 x 1m
 Full wall visual size: 2 x 1.85m



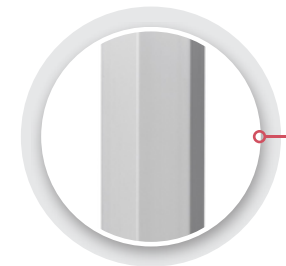
| WALL CONFIGURATION | DISPLAY CODE |
|---|--------------|
| No walls | VI-AM-166-D |
| 1 x full wall skin | VI-AM-164-D |
| 2 x full wall skins | VI-AM-162-D |
| 3 x full wall skins | VI-AM-160-D |
| 1 x half wall skin | VI-AM-159-D |
| 2 x half wall skins | VI-AM-158-D |
| 3 x half wall skins | VI-AM-156-D |
| 4 x half wall skins | VI-AM-154-D |
| 1 x half wall skin, 1 x full wall skin | VI-AM-153-D |
| 2 x half wall skins, 1 x full wall skin | VI-AM-151-D |
| 3 x half wall skins, 1 x full wall skin | VI-AM-149-D |

| Refresh the gazebo for multiple campaigns by buying a new skin | |
|--|-----------|
| Roof Reskin Code | GZ-AM-48- |
| Full Wall Reskin Code | D GZ-AM- |
| Half Wall Reskin Code | 58-D GZ- |

This gazebo is perfect for brand activations, product launches, sporting events and mobile retail shops to mention a few. The Petite Gazebo features extra collapsible legs that slide in making it compact and portable allowing for easy transportation.



4 attached loops for additional stability, used to secure gazebo with ground pegs and ropes



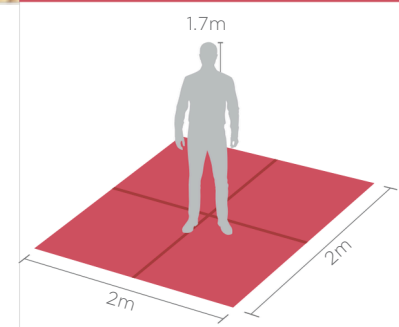
Aluminium hexagonal leg profile for superior strength



Pre-punched feet to easily secure gazebo with ground pegs



GAZEBO FOOTPRINT



Collapsible gazebo fits easily into carry bag



Slip over bag included
(ALSO SOLD INDIVIDUALLY AS DISBAG-2140)



Toolkit included: 1 x mallet, 4 x ropes, 4 x frame pegs, 4 x rope pegs
(ALSO SOLD INDIVIDUALLY AS TOOLKIT-2000)

Image shown is for VI-AM-151-D

Branding is visible on one side only, walls can face inwards or outwards

FADE RESISTANT GAZEBO
3 X 3M

SPECIFICATIONS

Weight: 19kg
 Hardware: 1 x frame: aluminium, assembled size: 3 x 3m, quick assembly, portable
 Slip over bag included: polyester oxford, size: 158 x 28 x 28cm, webbing handles
 Toolkit Included: 1 x mallet: rubber & wood, 4 x ropes: nylon, 4 x frame pegs: steel, 4 x rope pegs: steel
 Fabric: print-guard polyester, water resistant
 Branding: single-sided, latex gen-4 printing
 Half wall visual size: 3 x 1m
 Full wall visual size: 3 x 1.9m



| WALL CONFIGURATION | DISPLAY CODE |
|---|--------------|
| No walls | VI-AM-205-D |
| 1 x full wall skin | VI-AM-206-D |
| 2 x full wall skins | VI-AM-207-D |
| 3 x full wall skins | VI-AM-208-D |
| 1 x half wall skin | VI-AM-209-D |
| 2 x half wall skins | VI-AM-191-D |
| 3 x half wall skins | VI-AM-190-D |
| 4 x half wall skins | VI-AM-189-D |
| 1 x half wall skin, 1 x full wall skin | VI-AM-187-D |
| 2 x half wall skins, 1 x full wall skin | VI-AM-185-D |
| 3 x half wall skins, 1 x full wall skin | VI-AM-183-D |

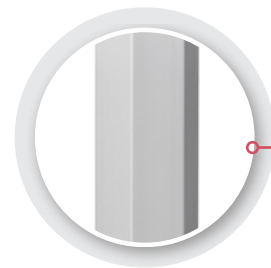
Refresh the gazebo for multiple campaigns by buying a new skin

| | |
|-----------------------|------------|
| Roof Reskin Code | GZ-AM-51-D |
| Full Wall Reskin Code | GZ-AM-52-D |
| Half Wall Reskin Code | GZ-AM-53-D |

With a slightly bigger footprint, this gazebo size is ideal for brand activations, product launches, sporting events and mobile retail to mention a few.



4 attached loops for additional stability, used to secure gazebo with ground pegs and ropes



Aluminium hexagonal leg profile for superior strength



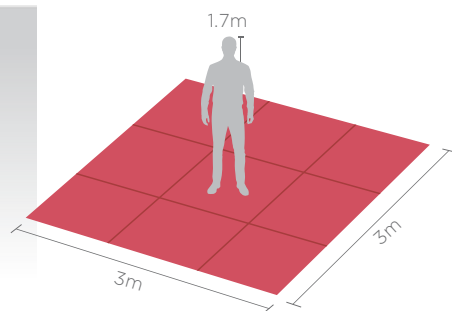
Pre-punched feet to easily secure gazebo with ground pegs



Image shown is for VI-AM-208-D

Branding is visible on one side only, walls can face inwards or outwards

GAZEBO FOOTPRINT



Collapsible gazebo fits easily into carry bag



Slip over bag included (ALSO SOLD INDIVIDUALLY AS DISBAG-2040)



Toolkit included: 1 x mallet, 4 x ropes, 4 x frame pegs, 4 x rope pegs

(ALSO SOLD INDIVIDUALLY AS TOOLKIT-2000)



BAG ON WHEELS FOR 3m GAZEBO SOLD INDIVIDUALLY AS DISPLAY-2001

FADE RESISTANT GAZEBO
4.5 X 3M

SPECIFICATIONS

Weight: 25kg
 Hardware: 1 x frame: aluminium, assembled size: 4.5 x 3m, quick assembly, portable
 Slip over bag included: polyester oxford, size: 158 x 29 x 31cm, webbing handles
 Toolkit included: 1 x mallet: rubber & wood, 4 x ropes: nylon, 4 x frame pegs: steel, 4 x rope pegs: steel
 Fabric: print-guard polyester, water resistant
 Branding: single-sided, latex gen-4 printing
 Short half wall visual size: 3 x 1m
 Long full wall visual size: 4.5 x 1.9m
 Short full wall visual size: 3 x 1.9m

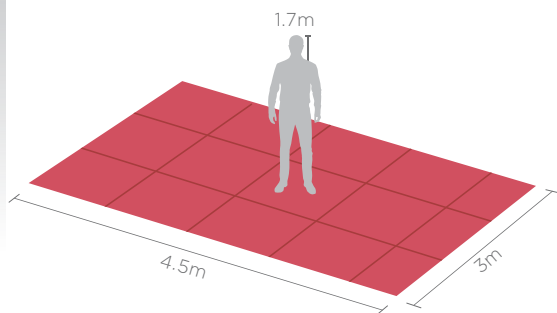


| WALL CONFIGURATION | DISPLAY CODE |
|--|--------------|
| No walls | VI-AM-182-D |
| 1 x long full wall skin | VI-AM-181-D |
| 2 x long full wall skins | VI-AM-180-D |
| 1 x long full wall skin, 1 x short full wall skin | VI-AM-178-D |
| 1 x long full wall skin, 2 x short half wall skins | VI-AM-176-D |
| 1 x short full wall skin | VI-AM-175-D |
| 2 x short full wall skins | VI-AM-173-D |
| 2 x short half wall skins | VI-AM-171-D |
| 1 x short half wall skin, 1 x long full wall skin | VI-AM-168-D |

Refresh the gazebo for multiple campaigns by buying a new skin

| | |
|-----------------------------|------------|
| Roof Reskin Code | GZ-AM-54-D |
| Long Full Wall Reskin Code | GZ-AM-55-D |
| Short Full Wall Reskin Code | GZ-AM-56-D |
| Short Half Wall Reskin Code | GZ-AM-57-D |

GAZEBO FOOTPRINT



This gazebo has a slightly bigger footprint, accommodating for extra retail or display space. Perfectly fits 2 trestle tables under roof and big enough to fit 1 vehicle. That extra space might come in handy depending on the activation, product launch or event at hand.



4 attached loops for additional stability, used to secure gazebo with ground pegs and ropes



Collapsible gazebo fits easily into carry bag



Slip over bag included (ALSO SOLD INDIVIDUALLY AS DISBAG-2080)

Toolkit included: 1 x mallet, 4 x ropes, 4 x frame pegs, 4 x rope pegs

(ALSO SOLD INDIVIDUALLY AS TOOLKIT-2000)



Aluminium hexagonal leg profile for superior strength



Pre-punched feet to easily secure gazebo with ground pegs

Image shown is for VI-AM-178-D. Branding is visible on one side only, walls can face inwards or outwards

OUTDOOR DISPLAY

OUTDOOR DISPLAY

FADE RESISTANT GAZEBO
6 X 3M

SPECIFICATIONS

Weight: 32kg
 Hardware: 1 x frame: aluminium, assembled size: 6 x 3m, quick assembly, portable
 Bag included: polyester oxford, size: 158 x 28 x 43cm, webbing handles
 Toolkit Included: 1 x mallet: rubber & wood, 6 x ropes: nylon, 6 x frame pegs: steel, 4 x rope pegs: steel
 Fabric: print-guard polyester, water resistant
 Branding: single-sided, latex gen-4 printing
 Short half wall visual size: 3 x 1m
 Long full wall visual size: 6 x 1.9m
 Short full wall visual size: 3 x 1.9m

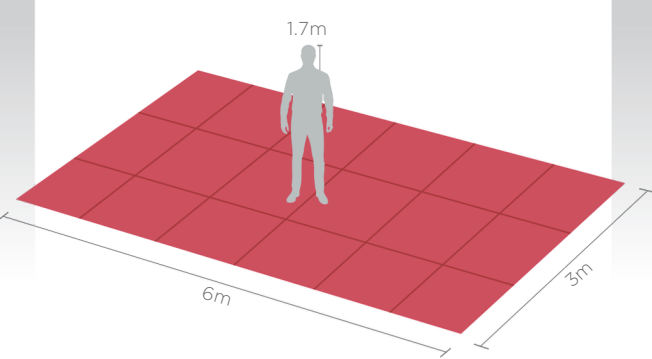
★★★
OVATION
 RANGE

| WALL CONFIGURATION | DISPLAY CODE |
|--|--------------|
| No walls | VI-AM-147-D |
| 1 x long full wall skin | VI-AM-150-D |
| 2 x long full wall skins | VI-AM-152-D |
| 1 x long full wall skin, 1 x short full wall skin | VI-AM-155-D |
| 1 x long full wall skin, 2 x short half wall skins | VI-AM-157-D |
| 1 x short full wall skin | VI-AM-161-D |
| 2 x short full wall skins | VI-AM-163-D |
| 2 x short half wall skins | VI-AM-165-D |
| 1 x short half wall skin, 1 x long full wall skin | VI-AM-167-D |

Refresh the gazebo for multiple campaigns by buying a new skin

| | |
|-----------------------------|------------|
| Roof Reskin Code | GZ-AM-41-D |
| Long Full Wall Reskin Code | GZ-AM-42-D |
| Short Full Wall Reskin Code | GZ-AM-43-D |
| Short Half Wall Reskin Code | GZ-AM-44-D |

GAZEBO FOOTPRINT



From outdoor events to corporate functions, this lightweight gazebo is the perfect display solution. It is fully collapsible and easy to setup, not mention fully customisable in terms of the number of walls and branding options. Branded Gazebos are a popular and affordable means of advertising.



4 attached loops for additional stability, used to secure gazebo with ground pegs and ropes

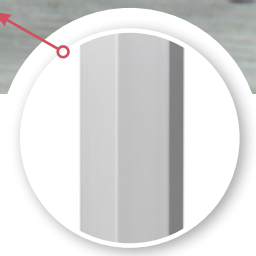


Image shown is for VI-AM-150-D
 Branding is visible on one side only, walls can face inwards or outwards



BRANDING OPTIONS:

The following branding options
are available on quotation

basis:

- Embroidery
- HTV vinyl
- Sublimation
- Laser Engraving

Contact us now for a quotation
heili@rifleprinting.co.za
james@rifleprinting.co.za
www.rifleprinting.co.za